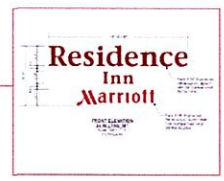
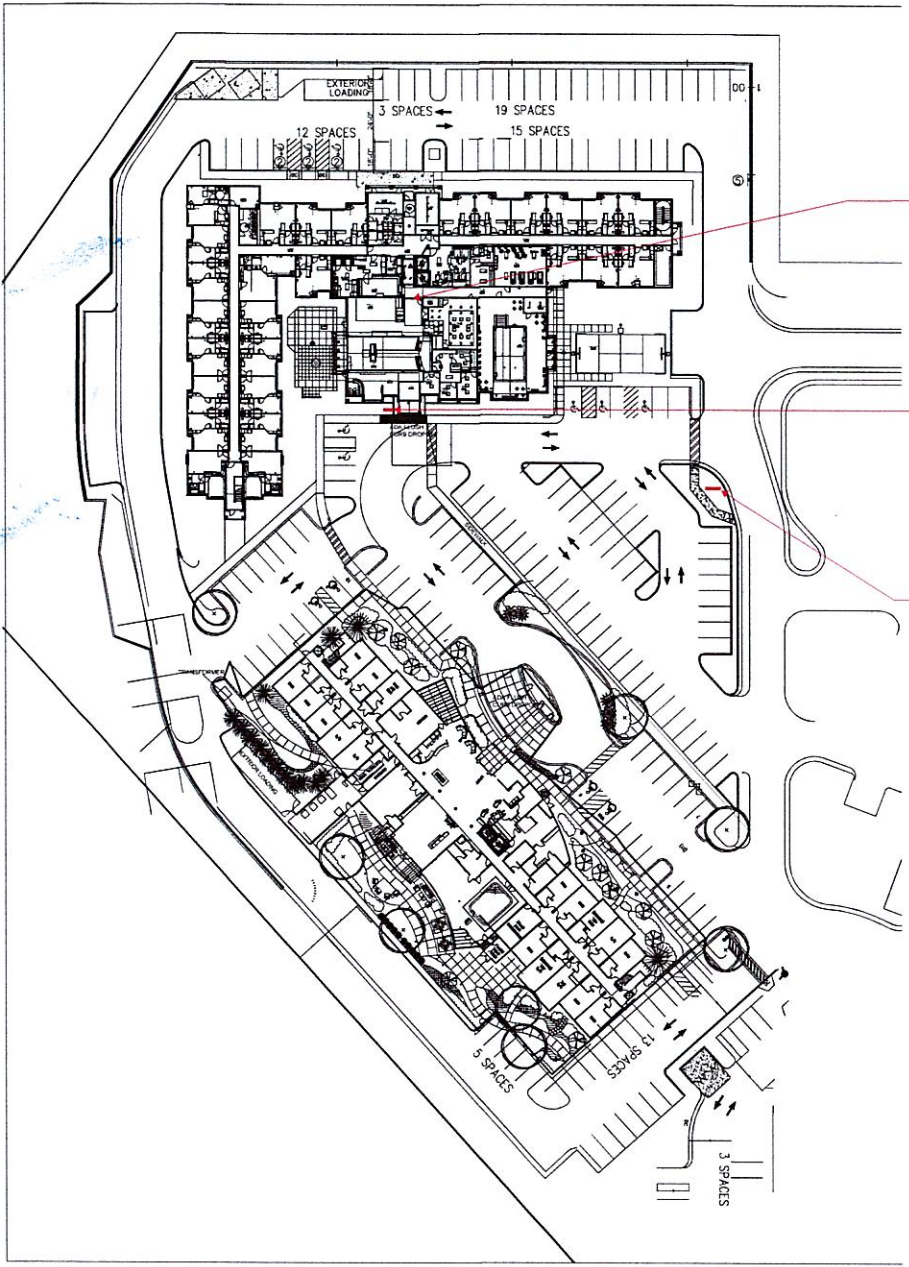


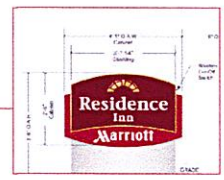
Town of Orangetown
MEETING OF:

JUL 11 2024

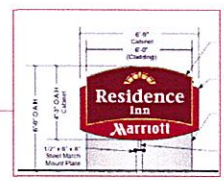
ARCHITECTURE & COMMUNITY
APPEARANCE BRD OF REVIEW



Existing
Sign E01
43.4 SQ FT



Existing
Sign E03
10.2 SQ FT



Existing
Sign E02
28.7 SQ FT

RECEIVED
JUN 24 2024
TOWN OF ORANGETOWN
LAND USE BOARDS

PERMITS
ONLY



PHILADELPHIASIGN
BRINGING THE WORLD'S BRANDS TO LIFE

707 West Spring Garden Street
Palmyra, New Jersey 08065

Phone: 856.829.1460
Fax: 856.829.8549
www.philadelphiasign.com

CUSTOMER:

MARRIOTT

JOB NUMBER:

MI 0049

SIGN TYPE:

N/A

LOCATION:

**170 NEW YORK 303
ORANGEBURG, NY 10962**

DATE:

3/4/24

DRAWN BY:

JDH

REVISION:

Number: Date: By:

SHEET:

1

ENG DEPT

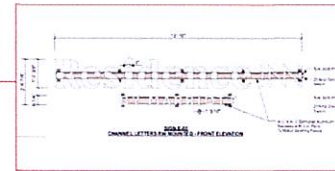
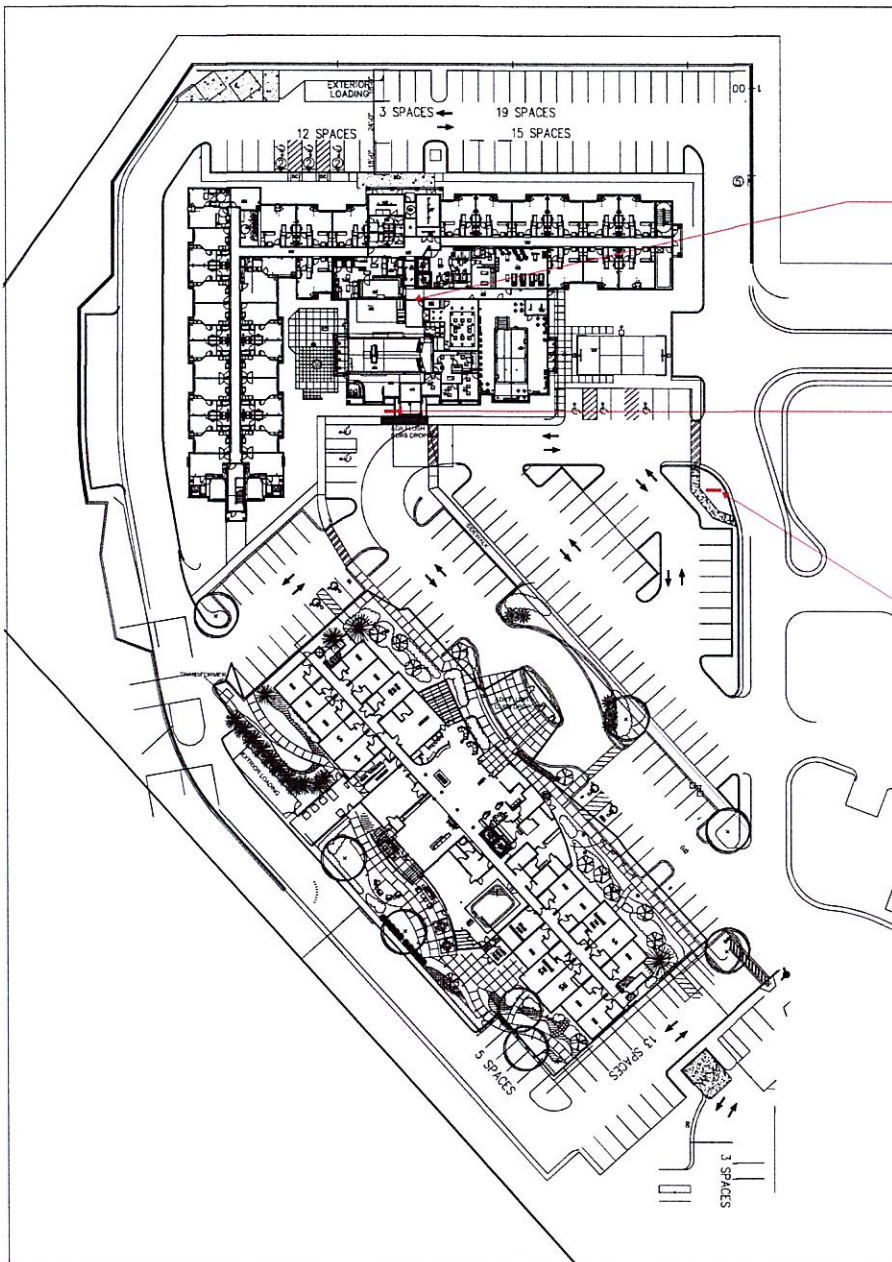
DWG NUMBER:

B-108379

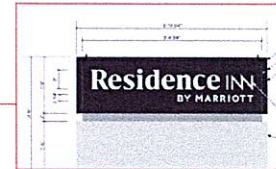
ENGINEER SEAL:

ULTIMATE WIND SPEED 115 MPH
EXPOSURE C

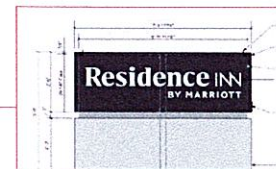
THIS IS AN ORIGINAL UNPUBLISHED DRAWING
CREATED BY PSCQ. IT IS SUBMITTED FOR YOUR
PERSONAL USE IN CONJUNCTION WITH A PROJECT
BEING PLANNED FOR YOU BY PSCQ. IT IS NOT TO
BE SHOWN TO ANYONE OUTSIDE YOUR
ORGANIZATION NOR IS IT TO BE USED, COPIED,
REPRODUCED, OR EXHIBITED IN ANY FASHION.



Proposed Sign E01
35.6 SQ FT



Proposed Sign E03
10.2 SQ FT



Proposed Sign E02
18.1 SQ FT

**PERMITS
ONLY**



PHILADELPHIASIGN
BRINGING THE WORLD'S BRANDS TO LIFE

707 West Spring Garden Street
Palmyra, New Jersey 08065

Phone: 856.829.1460
Fax: 856.829.8549
www.philadelphiasign.com

CUSTOMER:

MARRIOTT

JOB NUMBER:

MI 0049

SIGN TYPE:

N/A

LOCATION:

**170 NEW YORK 303
ORANGEBURG, NY 10962**

DATE:

3/4/24

DRAWN BY:

JDH

REVISION:

Number: Date: By:

SHEET:

2

ENG DEPT

DWG NUMBER:

B-108379

ENGINEER SEAL:

ULTIMATE WIND SPEED 115 MPH
EXPOSURE C

THIS IS AN ORIGINAL UNPUBLISHED DRAWING
CREATED BY PSCG. IT IS SUBMITTED FOR YOUR
PERSONAL USE IN CONJUNCTION WITH A PROJECT
BEING PLANNED FOR YOU BY PSCG. IT IS NOT TO
BE SHOWN TO ANYONE OUTSIDE YOUR
ORGANIZATION NOR IS IT TO BE USED, COPIED,
REPRODUCED, OR EXHIBITED IN ANY FASHION.

E01 ILLUMINATED WHITE R/W 1' 7-3/8" h x 13' 10" w x 2' 6-7/8" oah (35.6 SF)

PROPOSED



EXISTING



PHILADELPHIASIGN
BRINGING THE WORLD'S BRANDS TO LIFE

707 West Spring Garden Street
Palmyra, New Jersey 08065

Phone: 856.829.1460
Fax: 856.829.8549
www.philadelphiasign.com

CUSTOMER:

MARRIOTT

JOB NUMBER:

MI 0049

SIGN TYPE:

N/A

LOCATION:

**170 NEW YORK 303
ORANGEBURG, NY 10962**

DATE:

3/4/24

DRAWN BY:

JDH

REVISION:

Number: Date: By:

SHEET:

3

ENG DEPT

DWG NUMBER:

B-108379

ENGINEER SEAL:

ULTIMATE WIND SPEED 115 MPH
EXPOSURE C

THIS IS AN ORIGINAL UNPUBLISHED DRAWING
CREATED BY PSCO. IT IS SUBMITTED FOR YOUR
PERSONAL USE IN CONJUNCTION WITH A PROJECT
BEING PLANNED FOR YOU BY PSCO. IT IS NOT TO
BE SHOWN TO ANYONE OUTSIDE YOUR
ORGANIZATION NOR IS IT TO BE USED, COPIED,
REPRODUCED, OR EXHIBITED IN ANY FASHION.

E02 ILLUMINATED MONUMENT SIGN 2' 6" h x 7' 3-11/16" w x 5' 0" oah (18.1 SF)

PROPOSED



EXISTING



PHILADELPHIASIGN
BRINGING THE WORLD'S BRANDS TO LIFE

707 West Spring Garden Street
Palmyra, New Jersey 08065

Phone: 856.829.1460
Fax: 856.829.8549
www.philadelphiasign.com

CUSTOMER:

MARRIOTT

JOB NUMBER:

MI 0049

SIGN TYPE:

N/A

LOCATION:

**170 NEW YORK 303
ORANGEBURG, NY 10962**

DATE:

3/4/24

DRAWN BY:

JDH

REVISION:

Number: Date: By:

SHEET:

4

ENG DEPT

DWG NUMBER:

B-108379

ENGINEER SEAL:

PHILADELPHIASIGN
BRINGING THE WORLD'S BRANDS TO LIFE

ULTIMATE WIND SPEED 115 MPH
EXPOSURE C

THIS IS AN ORIGINAL UNPUBLISHED DRAWING
CREATED BY PSCG. IT IS SUBMITTED FOR YOUR
PERSONAL USE IN CONJUNCTION WITH A PROJECT
BEING PLANNED FOR YOU BY PSCG. IT IS NOT TO
BE SHOWN TO ANYONE OUTSIDE YOUR
ORGANIZATION NOR IS IT TO BE USED, COPIED,
REPRODUCED, OR EXHIBITED IN ANY FASHION.

E03 ILLUMINATED MONUMENT SIGN 1' 9"h x 5' 10-3/4"w x 3' 6"oah (10.2 SF)

PROPOSED



EXISTING



PHILADELPHIASIGN
BRINGING THE WORLD'S BRANDS TO LIFE

707 West Spring Garden Street
Palmyra, New Jersey 08065

Phone: 856.829.1460
Fax: 856.829.8549
www.philadelphiasign.com

CUSTOMER:

MARRIOTT

JOB NUMBER:

MI 0049

SIGN TYPE:

N/A

LOCATION:

**170 NEW YORK 303
ORANGEBURG, NY 10962**

DATE:

3/4/24

DRAWN BY:

JDH

REVISION:
Number: Date: By:

SHEET: ENG DEPT

5

DWG NUMBER:

B-108379

ENGINEER SEAL:

ULTIMATE WIND SPEED 115 MPH
EXPOSURE C

THIS IS AN ORIGINAL UNPUBLISHED DRAWING
CREATED BY PSCD. IT IS SUBMITTED FOR YOUR
PERSONAL USE IN CONJUNCTION WITH A PROJECT
BEING PLANNED FOR YOU BY PSCD. IT IS NOT TO
BE SHOWN TO ANYONE OUTSIDE YOUR
ORGANIZATION NOR IS IT TO BE USED, COPIED,
REPRODUCED, OR EXHIBITED IN ANY FASHION.

RECEIVED

JUN 24 2024

Sign E-01

1'-7 3/8" Residence INN / 6 1/4" BY MARRIOTT x 13'-10" OAW Raceway Mtd Channel Letters

TOWN OF ORANGETOWN
LAND USE BOARDS



Front Elevation
Scale: 1/16" = 1'-0"

PHILADELPHIASIGN
CREATING THE VISUAL IDENTITY TO SUIT
707 West Spring Garden Street
Pahyra, New Jersey 08065
Phone: 856.829.1460
Fax: 856.829.8549
www.philadelphiasign.com

CUSTOMER:
MARRIOTT
JOB NUMBER:
MI 0049
SIGN TYPE:
VARIOUS
LOCATION:
**170 NEW YORK 303
ORANGEBURG, NY 10962**

DATE:
11/14/22

DRAWN BY:
RVR

REVISION:
Number 1 Date 11/21/22 By RVR

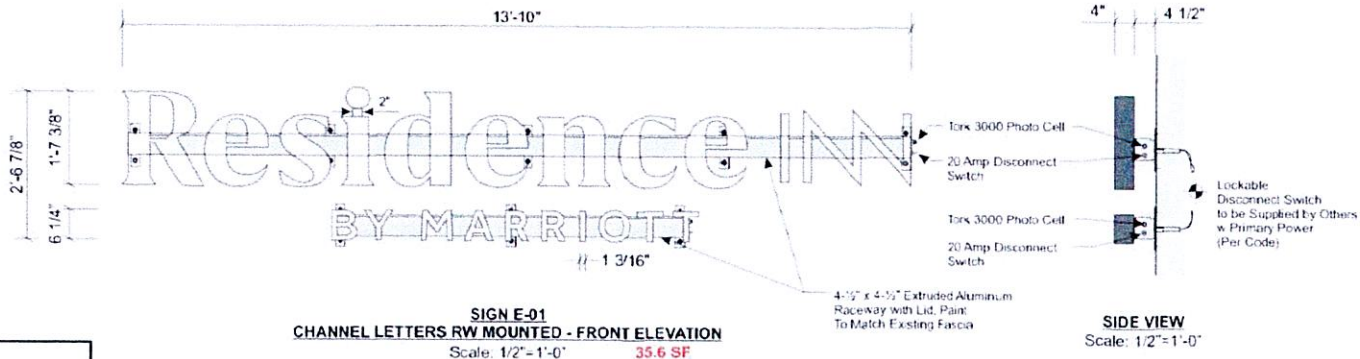
SHEET: 1 OF 6
ENG DEPT

DWG NUMBER:
B-103157

ENGINEER SEAL:

ULTIMATE WIND SPEED 115 MPH
EXPOSURE C

THIS IS AN ORIGINAL UNPUBLISHED DRAWING
CREATED BY PSCD. IT IS SUBMITTED FOR YOUR
PERSONAL USE IN CONNECTION WITH A PROJECT
BEING PLANNED FOR YOU BY PSCD. IT IS NOT TO
BE SHOWN TO ANYONE OUTSIDE YOUR
ORGANIZATION NOR IS IT TO BE USED, COPIED,
REPRODUCED, OR EXHIBITED IN ANY MANNER.



ELECTRICAL LOAD
(1.74) Amps @ 120 Volts
ELECTRICAL REQ'MTS
(1) 20 Amp/120 Volt Circuits

LED Specifications
1. (3) BITRO - ASU-60-12U
80 Watt LED Power Supply
2. Bitro OmegaOPTICS
Plus (OTSP-M3PL-BW65)
White LEDs

STANDARD LETTER NOTES:
1. Sufficient Primary Circuit In Vicinity Of Sign
By Others.
2. Letter To Letter Wiring & Final Primary Hook-up
By Sign Installer, Where Allowed By Local Codes
3. Sign Shall Be U.L. Listed.
4. Mounting Hardware By Sign Installer.
5. Full Size Drilling Template Furnished With Sign.

Note: This sign is intended to be installed in accordance with the requirements of Article 600 of the NFPA 70 National Electrical Code and/or other applicable local codes. This includes proper grounding and bonding of the sign.

1'-7 3/8" "Residence Inn" / 6 1/4" "By Marriott" x 13'-10" OAW RW mtd Channel Letters
Faces: 3/16" Thk #7328 White Acrylic
Returns: 4" x .040 Precoat Silver Alum. Coil Return Painted Mathew MP 540 (PMS 425C), Satin Finish
Trim cap: 1" Jewelite Trimcap Painted Mathew MP 540 (PMS 425C) Gray, Satin finish
Illumination: Bitro Optics PRO X Plus Bright White (6500K) LED's Modules & Bitro Power Supplies
Attachment: To Wall with Raceway Painted to Match existing Wall & 3/8" Dia Hardware To suite wall conditions

**PERMITS
ONLY**



PHILADELPHIASIGN
TRAINING THE INDUSTRY SERVING THE CITY

707 West Spring Garden Street
 Pahrissa, New Jersey 08055

Phone: 856.829.1440
 Fax: 856.829.8549
 www.philadelphiaign.com

CUSTOMER:

MARRIOTT

JOB NUMBER:

MI 0049

SIGN TYPE:

VARIOUS

LOCATION:

**170 NEW YORK 303
 ORANBURG, NY 10962**

DATE:

11/14/22

DRAWN BY:

RVR

REVISION:

Number	Date	By
1	11/21/22	RVR

SHEET:

ENG DEPT

2 OF 6

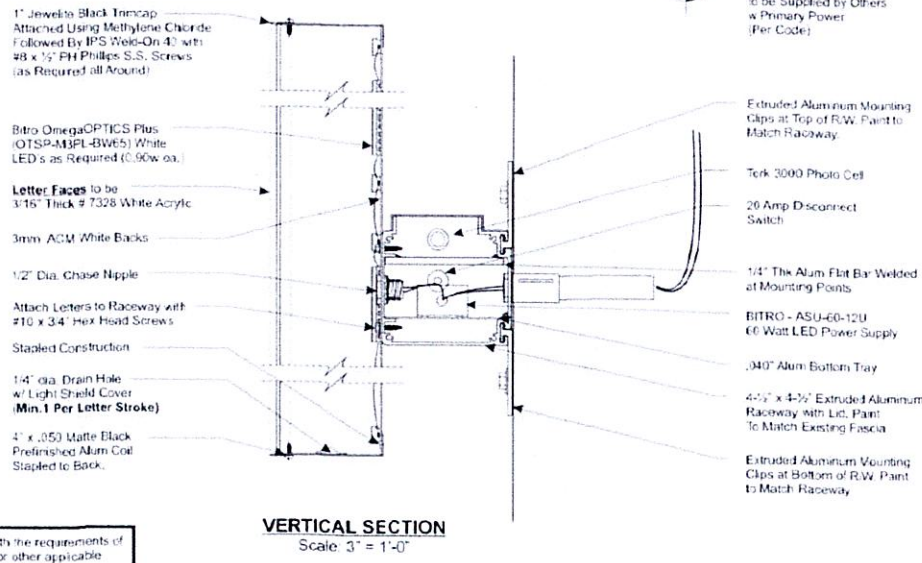
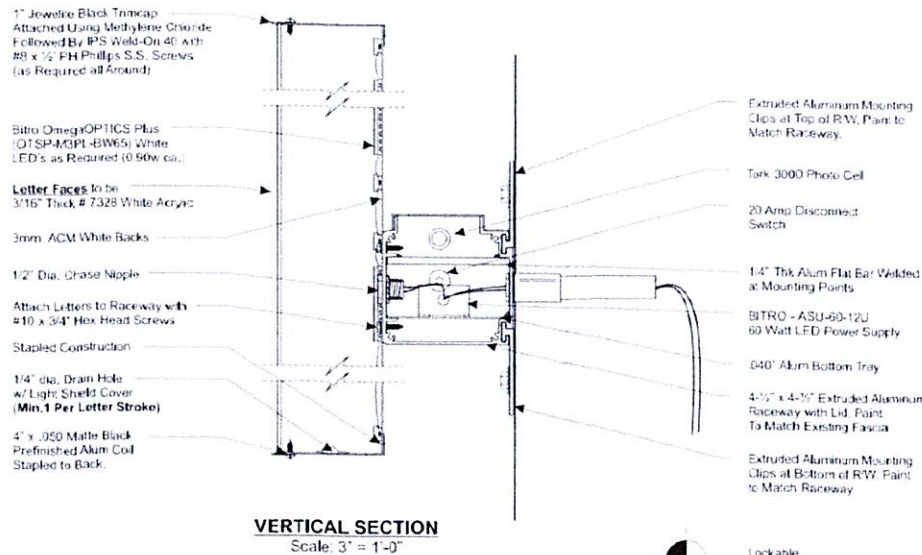
DWG NUMBER:

B-103157

ENGINEER SEAL:

**ULT-MATE WIND SPEED 115 MPH
 EXPOSURE C**

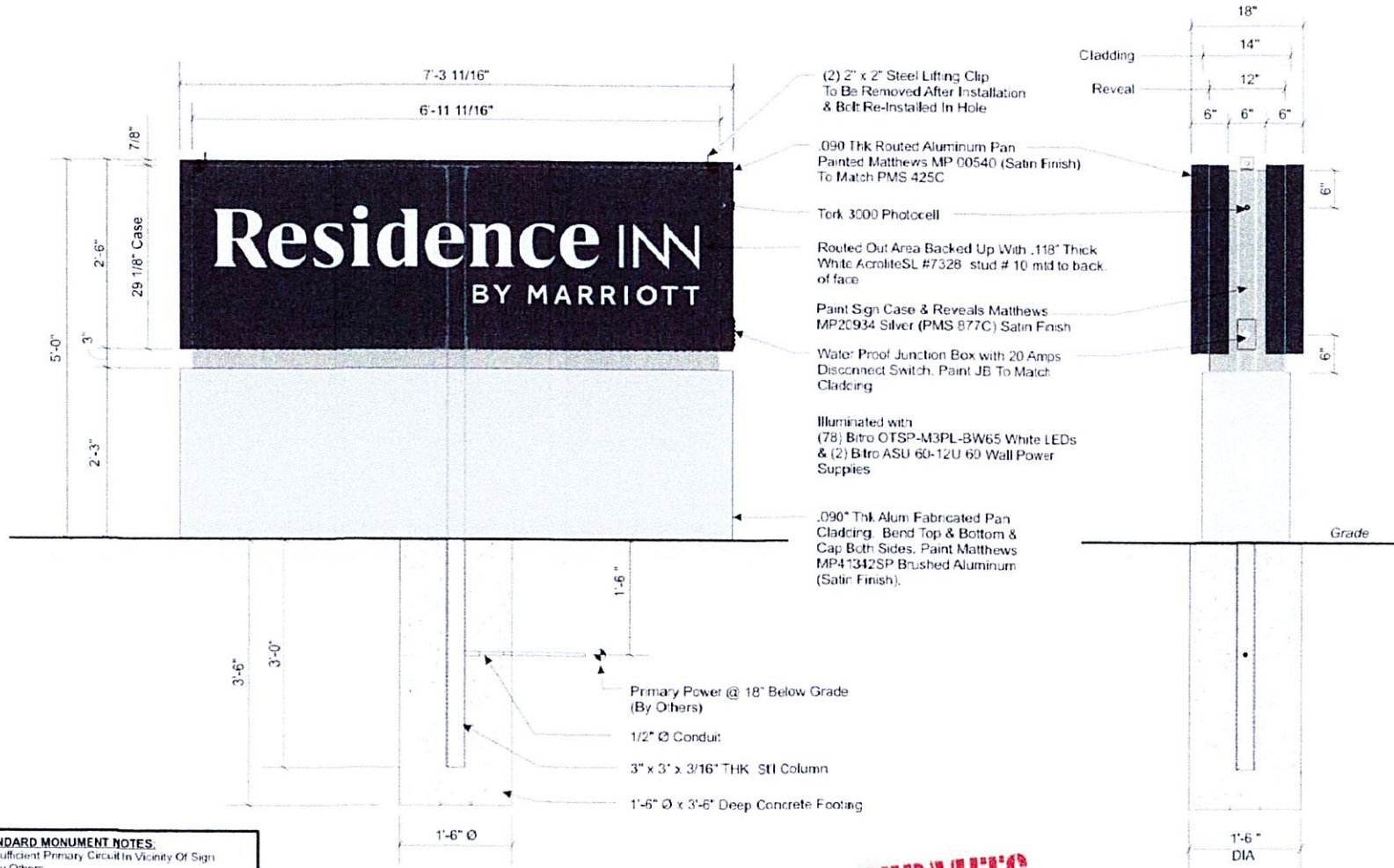
THIS IS AN ORIGINAL UNPUBLISHED DRAWING
 CREATED BY PSCD. IT IS SUBMITTED FOR YOUR
 PERSONAL USE IN CONJUNCTION WITH A PROJECT
 BEING PLANNED FOR YOU BY PSCD. IT IS NOT TO
 BE SHOWN TO ANYONE OUTSIDE YOUR
 ORGANIZATION NOR IS IT TO BE USED, COPIED,
 REPRODUCED OR EXHIBITED IN ANY FASHION.



Lockable Disconnect Switch to be Supplied by Others w Primary Power (Per Code)

Note: This sign is intended to be installed in accordance with the requirements of Article 600 of the NFPA 2017 National Electrical Code and/or other applicable local codes. This includes proper grounding and bonding of the sign.





- STANDARD MONUMENT NOTES:**
1. Sufficient Primary Circuit In Vicinity Of Sign By Others.
 2. Final Primary Hook-up By Sign Installer, Where Allowed By Local Codes.
 3. Sign Shall Be U.L. Listed.
 4. Soil Assumed To Be Medium Clay Or Better With Minimum Soil Bearing Capacity Of 2,500 PSF.
 5. Concrete 2,500 PSI @ 28 Days.
 6. Reinforcing Steel Shall Be ASTM A615 GR-40.
 7. Structural Steel Shall Be ASTM A36.
 8. All Welds Shall Conform To A.W.S Standards.

Note: This sign is intended to be installed in accordance with the requirements of Article 600 of the NFPA 70 National Electrical Code and/or other applicable local codes. This includes proper grounding and bonding of the sign.

SIGN E-02
5' H DOUBLE SIDED ILLUMINATED MONUMENT
 SCALE: 3/4" = 1'-0"

PERMITS ONLY

SIDE VIEW
 SCALE: 3/4" = 1'-0"

ELECTRICAL LOAD
 (1.16) Amps @ 120 Volts
ELECTRICAL REQ'MTS
 (1) 20 Amp/120 Volt Circuits

PHILADELPHIASIGN
 CREATING THE WORLD'S FINEST SIGNS

707 West Spring Garden Street
 Paltmyra, New Jersey 08665

Phone: 856.829.1460
 Fax: 856.829.8549
 www.philadelphiasign.com

CUSTOMER:
MARRIOTT

JOB NUMBER:
MI 0049

SIGN TYPE:
VARIOUS

LOCATION:
170 NEW YORK 303
ORANGEBURG, NY 10962

DATE
11/14/22

DRAWN BY:
RVR

REVISION:

Number	Date	By
1	11/21/22	RVR

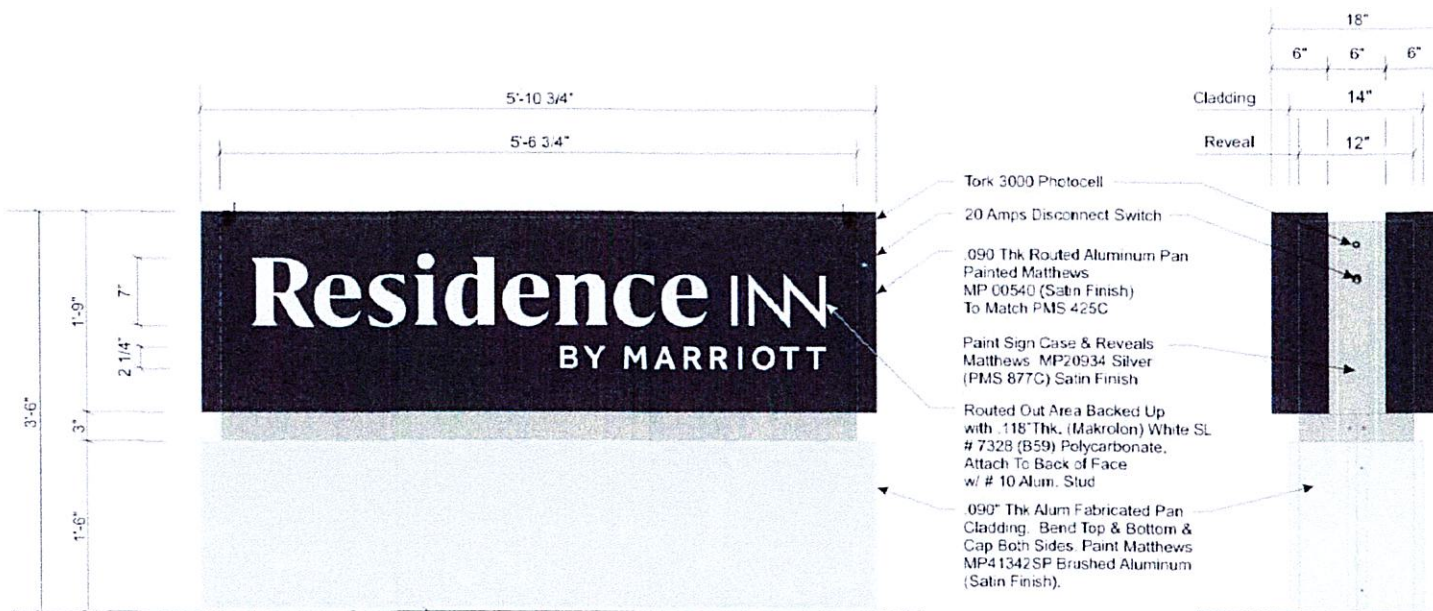
SHEET: ENG DEPT
3 OF 6

DWG NUMBER:
B-103157

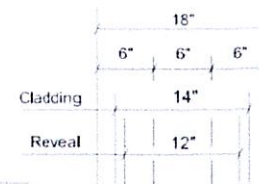
ENGINEER SEAL:

ULTIMATE WIND SPEED 115 MPH
EXPOSURE C

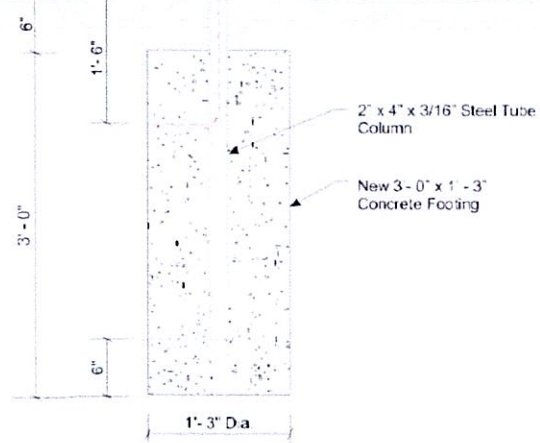
THIS IS AN ORIGINAL UNPUBLISHED DRAWING CREATED BY PS&C. IT IS SUBMITTED FOR YOUR PERSONAL USE IN CONNECTION WITH A PROJECT BEING PLANNED FOR YOU BY PS&C. IT IS NOT TO BE SHOWN TO ANYONE OUTSIDE YOUR ORGANIZATION NOR IS IT TO BE USED, COPIED, REPRODUCED, OR EXHIBITED IN ANY FASHION.



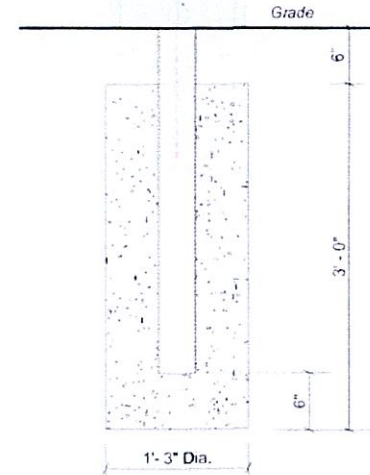
- Tork 3000 Photocell
- 20 Amps Disconnect Switch
- .090 Thk Routed Aluminum Pan Painted Matthews MP 00540 (Satin Finish) To Match PMS 425C
- Paint Sign Case & Reveals Matthews MP20934 Silver (PMS 877C) Satin Finish
- Routed Out Area Backed Up with .118\" Thk. (Makrolon) White SL # 7328 (B59) Polycarbonate. Attach To Back of Face w/ # 10 Alum. Stud
- .090\" Thk Alum Fabricated Pan Cladding. Bend Top & Bottom & Cap Both Sides. Paint Matthews MP41342SP Brushed Aluminum (Satin Finish).



Install Sign So Photocell & Shut Off Switch Do Not Face Roadway



**SIGN E-03 -FRONT ELEVATION
D/F ILLUMINATED MONUMENT SIGN**
SCALE: 1\" = 1\" - 0\"



SIDE VIEW
SCALE: 1\" = 1\" - 0\"

**PERMITS
ONLY**

- STANDARD MONUMENT NOTES:**
1. Sufficient Primary Circuit In Vicinity Of Sign By Others.
 2. Final Primary Hook-up By Sign Installer, Where Allowed By Local Codes.
 3. Sign Shall Be U.L. Listed.
 4. Soil Assumed To Be Medium Clay, Or Better, With Minimum Soil Bearing Capacity Of 2,500 PSF.
 5. Concrete 2,500 PSI @ 28 Days.
 6. Reinforcing Steel Shall Be ASTM A615 GR-40.
 7. Structural Steel Shall Be ASTM A36.
 8. All Welds Shall Conform To A-W-S Standards.

Note: This sign is intended to be installed in accordance with the requirements of Article 600 of the NFPA 70 National Electrical Code and/or other applicable local codes. This includes proper grounding and bonding of the sign.

ELECTRICAL LOAD
(1.16) Amps @ 120 Volts
ELECTRICAL REQMTS
(1) 20 Amp/120 Volt Circuits



PHILADELPHIASIGN
PHILADELPHIA, PA 19104

707 West Spring Garden Street
Palmira, New Jersey 08065

Phone: 856.629.1460
Fax: 856.829.8549
www.philadelphiasign.com

CUSTOMER:
MARRIOTT

JOB NUMBER:
MI 0049

SIGN TYPE:
VARIOUS

LOCATION:
**170 NEW YORK 303
ORANGEBURG, NY 10962**

DATE
11/14/22

DRAWN BY:
RVR

REVISION:

Number	Date	By
1	11/21/22	RVR

SHEET: ENG DEPT
4 OF 6

DWG NUMBER:
B-103157

ENGINEER SEAL:

**ULTIMATE WIND SPEED 115 MPH
EXPOSURE C**

THIS IS AN ORIGINAL UNPUBLISHED DRAWING CREATED BY PSCO. IT IS SUBMITTED FOR YOUR PERSONAL USE IN CONNECTION WITH A PROJECT BEING PLANNED FOR YOU BY PSCO. IT IS NOT TO BE SHOWN TO ANYONE OUTSIDE YOUR ORGANIZATION NOR IS IT TO BE USED, COPIED, REPRODUCED, OR EXHIBITED IN ANY FASHION.



PHILADELPHIASIGN
CREATING THE AREA'S MOST INFLUENTIAL SIGNS

707 West Spring Garden Street
Philadelphia, New Jersey 08105

Phone: 856.829.1460
Fax: 856.829.8540
www.philadelphiasign.com

CUSTOMER:

MARRIOTT

JOB NUMBER:

MI 0049

SIGN TYPE:

VARIOUS

LOCATION:

**170 NEW YORK 303
ORANGEBURG, NY 10962**

DATE:

11/14/22

DRAWN BY:

RVR

REVISION:

Number: 1 Date: 11/21/22 By: RVR

SHEET:

ENGDEPT

5 OF 6

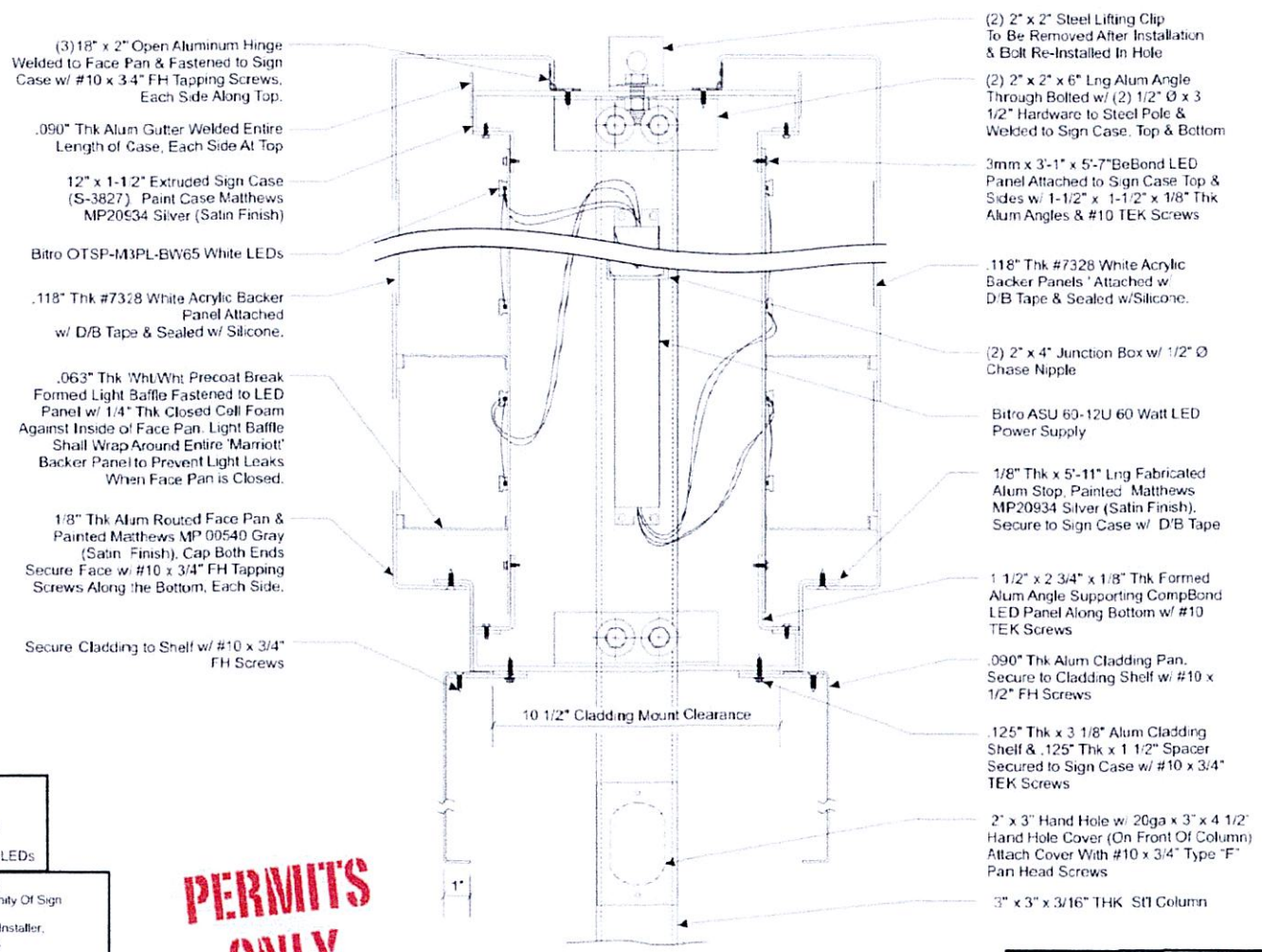
DWG NUMBER:

B-103157

ENGINEER SEAL:

ULTIMATE WIND SPEED 115 MPH
EXPOSURE C

THIS IS AN ORIGINAL UNPUBLISHED DRAWING
CREATED BY PSCD. IT IS SUBMITTED FOR YOUR
PERSONAL USE IN CONNECTION WITH A PROJECT
BEING PLANNED FOR YOU BY PSCD. IT IS NOT TO
BE SHOWN TO ANYONE OUTSIDE YOUR
ORGANIZATION NOR IS IT TO BE USED, COPIED,
REPRODUCED, OR EXHIBITED IN ANY MANNER.



SECTION VIEW (TYP)
SCALE: 3" = 1'-0"

LED Specifications

- (2) BITRO - ASU-60-12U
60 Watt LED Power Supply
- (78) Bitro OpticsPRO Plus
(OTSP-M3PL-BW65) White LEDs

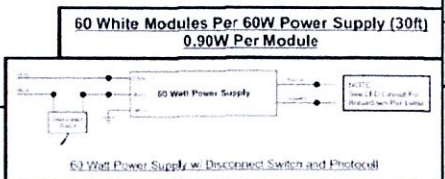
STANDARD MONUMENT NOTES:

- Sufficient Primary Circuit In Vicinity Of Sign
By Others.
- Final Primary Hook-up By Sign Installer,
Where Allowed By Local Codes.
- Sign Shall Be U.L. Listed
- Soil Assumed To Be Medium Clay Or Better, With
Minimum Soil Bearing Capacity Of 2,500 PSF.
- Concrete 2,500 PSI @ 28 Days.
- Reinforcing Steel Shall Be ASTM A615 GR-40.
- Structural Steel Shall Be ASTM A36.
- All Welds Shall Conform To A.W.S. Standards.

Note: This sign is intended to be installed in accordance with the requirements of Article 600 of the NFPA 2017 National Electrical Code and/or other applicable local codes. This includes proper grounding and bonding of the sign.

**PERMITS
ONLY**

ELECTRICAL LOAD
(1.16) Amps @ 120 Volts
ELECTRICAL REQ'MENTS
(1) 20 Amp/120 Volt Circuits



Double-Sided Illuminated Pylon Reface

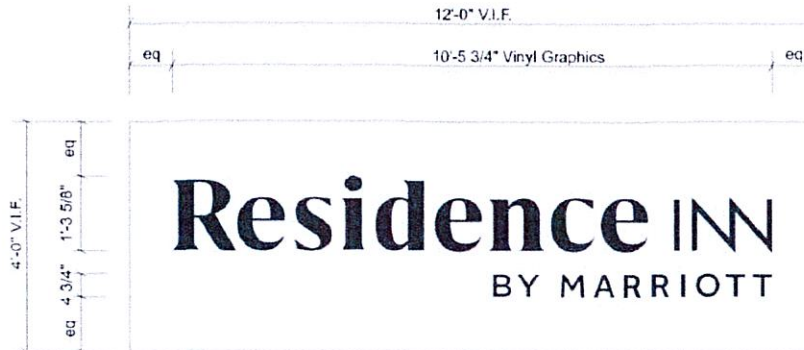
Sign E-04



Existing Elevation



Proposed Elevation



.177" Thk Tuffak White SL #7328 (B54) Polycarbonate w/ Digitally Printed Vinyl Copy To Match PMS 425d Applied 1st Surface.

SIGN E-04
DOUBLE SIDED ILLUMINATED PYLON REFACE
 SCALE: 1/2" = 1'-0"



Note: This sign is intended to be installed in accordance with the requirements of Article 600 of the NFPA 2017 National Electrical Code and/or other applicable local codes. This includes proper grounding and bonding of the sign.

All Dimensions To Be Field Verified Before Fabrication



PHILADELPHIASIGN
 MAKING THE WORLD'S MARKETS FOLLOW

707 West Spring Garden Street
 Palmyra, New Jersey 08055
 Phone: 856.829.1460
 Fax: 856.829.8549
 www.philadelphiasign.com

CUSTOMER:

MARRIOTT

JOB NUMBER:

MI 0049

SIGN TYPE:

VARIOUS

LOCATION:

**170 NEW YORK 303
 ORANGEBURG, NY 10962**

DATE

11/14/22

DRAWN BY:

RVR

REVISION:

Number	Date	By
1	11/21/22	RVR

SHEET:

ENG DEPT

6 OF 6

DWG NUMBER:

B-103157

ENGINEER SEAL:

ULTIMATE WIND SPEED 115 MPH
 EXPOSURE C

THIS IS AN ORIGINAL UNPUBLISHED DRAWING
 CREATED BY PSCD. IF IT IS SUBMITTED FOR YOUR
 PERSONAL USE IN CONJUNCTION WITH A PROJECT
 BEING PLANNED FOR YOU BY PSCD, IT IS NOT TO
 BE SHOWN TO ANYONE OUTSIDE YOUR
 ORGANIZATION NOR IS IT TO BE USED, COPIED,
 REPRODUCED, OR EXHIBITED IN ANY MANNER.