

SURVEYOR:

NYACK RESIDENCE
92 CLINTON AVENUE
NYACK, NY 10960

APPROVED & COMPLETED
LANDSCAPE ARCHITECTURE
JUL 9 5 2024
TOWN OF ORANGETOWN
PLANNING BOARD

DATE: JUNE 6, 2024
DRAWN BY: ZJS
JOB NO: 060424
SCALE: 1/8" = 1'-0"
FILENAME: 2024_0628 92 Clinton

REVISIONS:
6/13/2024
6/26/2024
6/28/2024

RECEIVED
JUL 10 2024
TOWN OF ORANGETOWN
LAND USE BOARD

By the M'Yost ASLA | Registered Landscape Architect

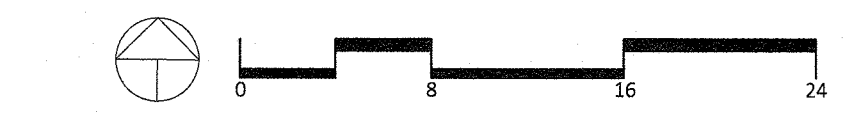
PLANTING PLAN

SHEET NO.

L-701

PLANT SCHEDULE

SYMBOL	QTY	BOTANICAL NAME	COMMON NAME	SIZE	CONTAINER
TREES					
	1	Amelanchier canadensis 'Autumn Brilliance'	Autumn Brilliance Serviceberry	6-7'	Multi-stem
	1	Cornus kousa	Kousa Dogwood	2.5-3'	
	7	Juniperus scopulorum 'Skyrocket'	Skyrocket Juniper	5-6'	
	1	Nyssa sylvatica	Sour Gum	3" Cal.	
	3	Picea abies 'Cupressina'	Norway Spruce	7-8'	
	1	Picea omorika	Serbian Spruce	8-10'	
	1	Prunus serrulata 'Kwanzan'	Kwanzan Japanese Flowering Cherry	3" Cal.	
	3	Tsuga canadensis	Canadian Hemlock	8-10'	
SHRUBS					
	3	Buddleia x 'Blue Chip'	Lo & Behold® Blue Chip Butterfly Bush	3 Gal	
	25	Buxus microphylla 'Winter Gem'	Globe Winter Gem Boxwood	24-30"	
	1	Cephalotaxus harringtonia	Plum Yew	5 Gal	
	2	Chamaecyparis pisifera 'Dow Whiting'	Soft Serve® Sawara Cypress	7 Gal	
	4	Deutzia gracilis 'Nikko'	Slender Deutzia	3 Gal	
	5	Itea virginica 'Henry's Garnet'	Henry's Garnet Sweetspire	5 Gal	
	1	Physocarpus opulifolius 'Little Devil'	Dwarf Ninebark	3 Gal	
	5	Prunus laurocerasus 'Schipkaensis'	Schipka English Laurel	4-5"	
	7	Syringa pubescens patula 'Miss Kim'	Miss Kim Korean Lilac	3 Gal	
GRASSES					
	16	Panicum virgatum 'Northwind'	Switch Grass	2 Gal	
PERENNIALS					
	7	Alchemilla mollis	Lady's Mantle	1 Gal	
	4	Allium x 'Millenium'	Millenium Ornamental Onion	1 Gal	
	1	Baptisia australis	Blue Wild Indigo	2 Gal	
	1	Paeonia lactiflora 'Shirley Temple'	Shirley Temple Peony	2 Gal	
	12	Perovskia x 'Little Spire'	Little Spire Russian Sage	1 Gal	
	5	Salvia nemorosa 'Caradonna'	Cardonna Meadow Sage	1 Gal	
	6	Stachys byzantina 'Big Ears'	Big Ears Lamb's Ear	1 Gal	



TO SCALE WHEN PLOTTED ON 24x36
PROGRESS SET NOT FOR CONSTRUCTION

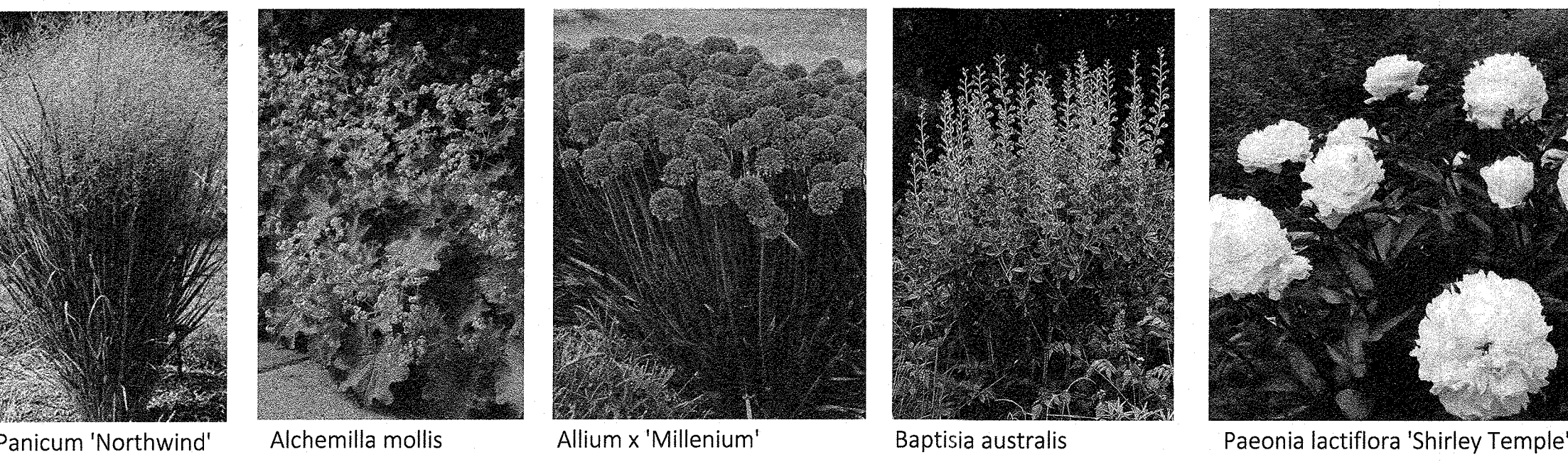
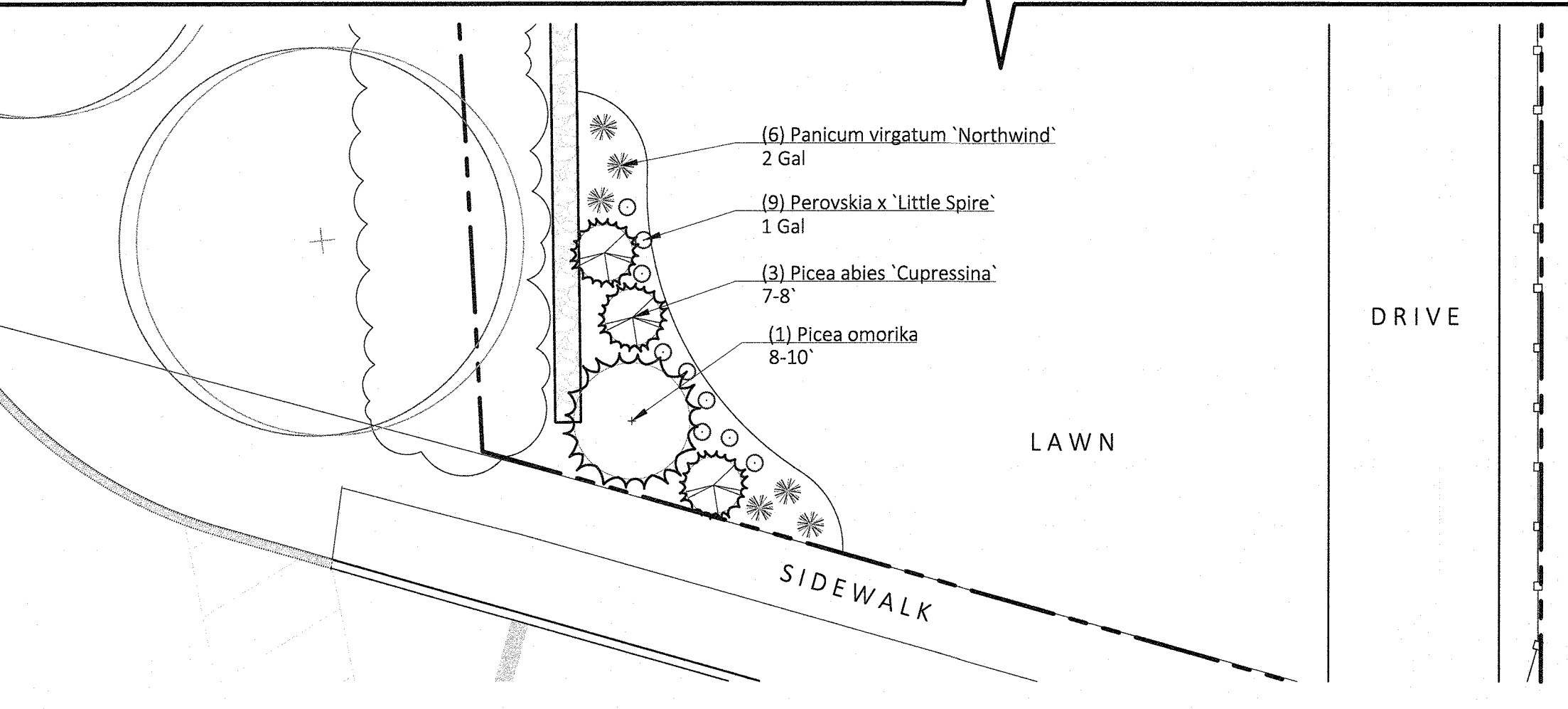
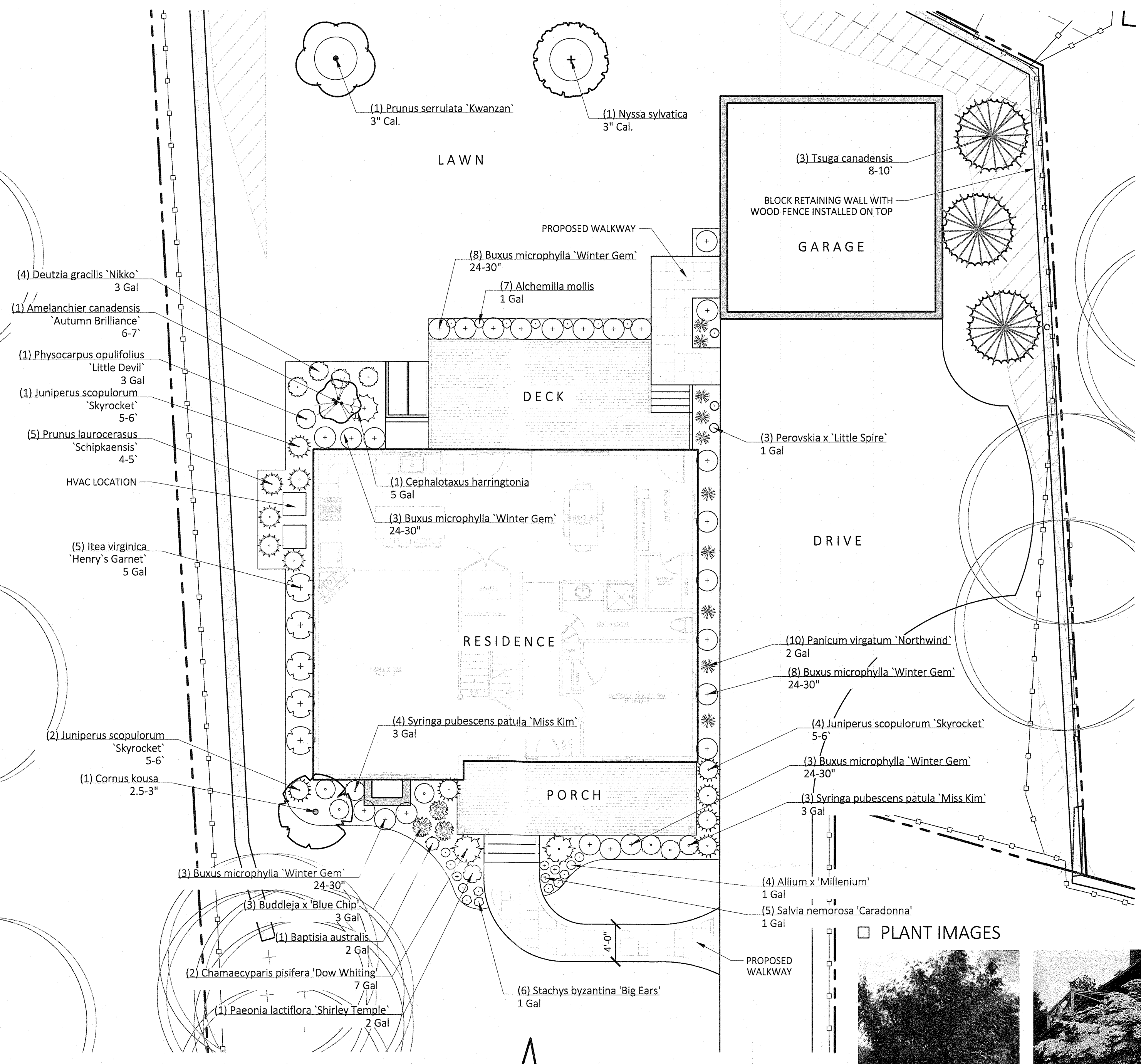
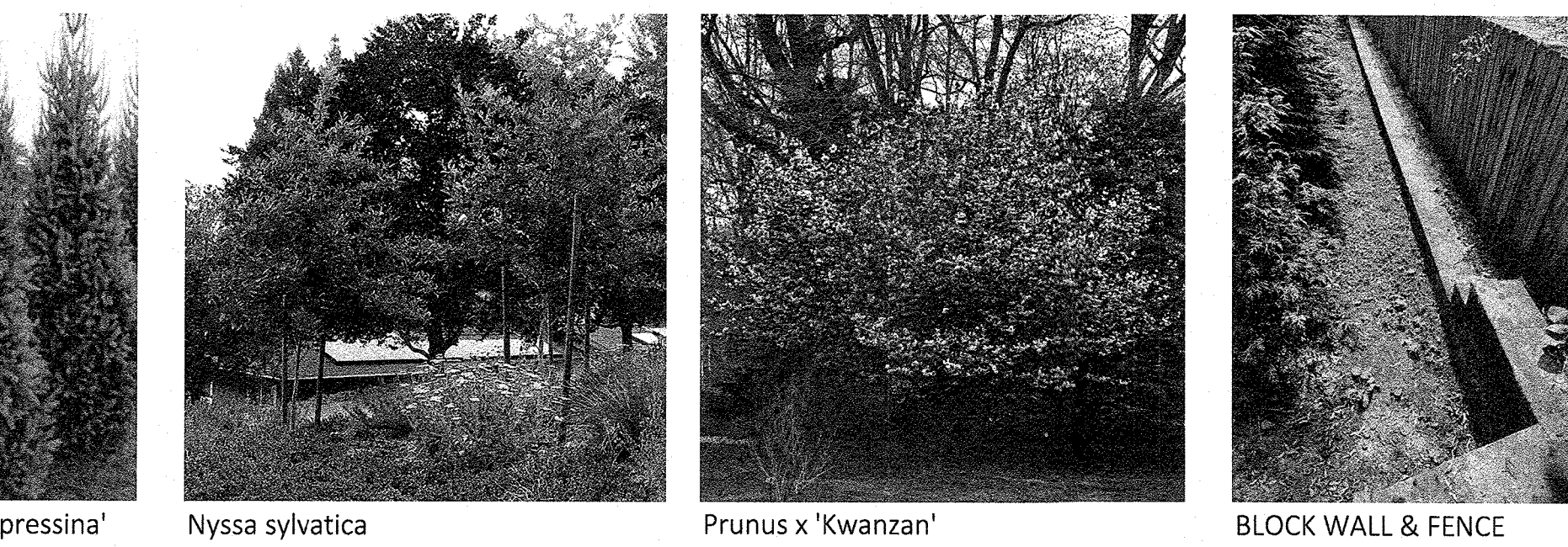
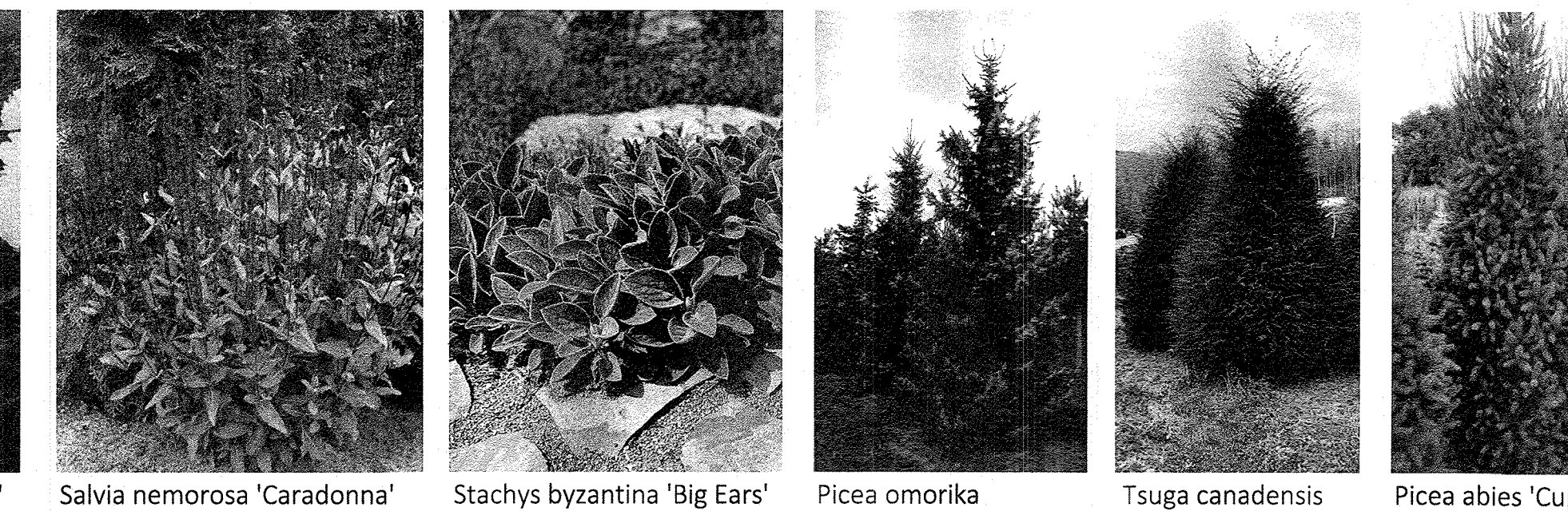
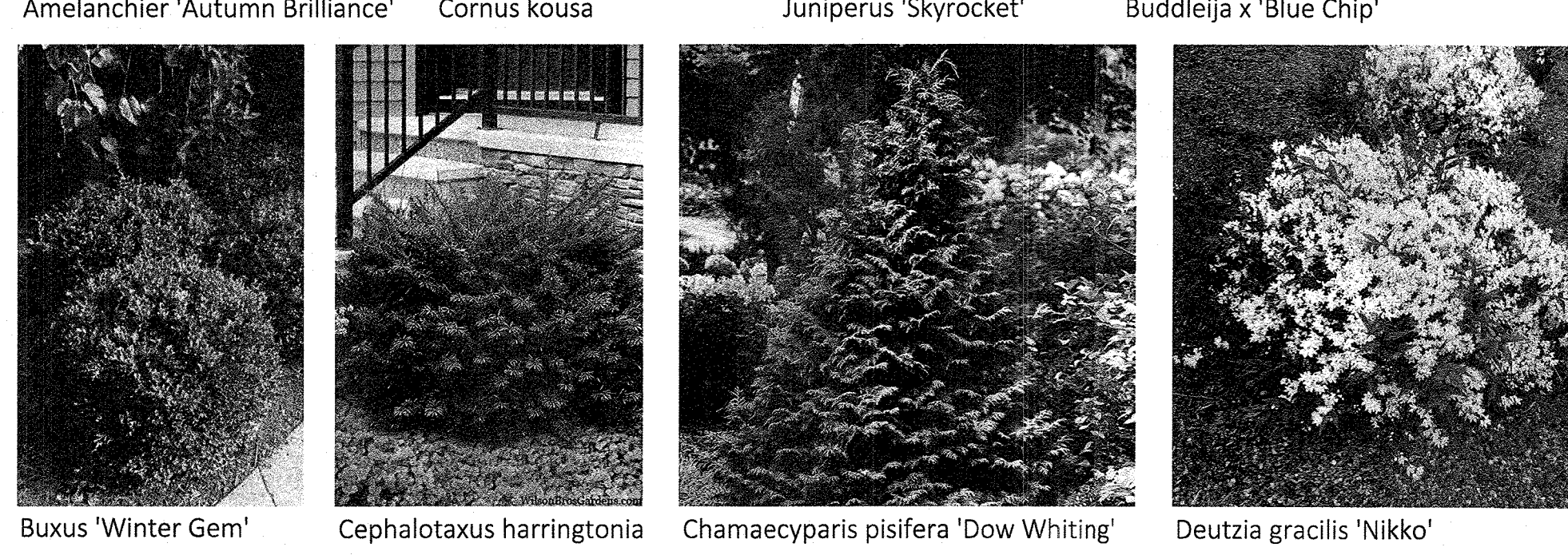
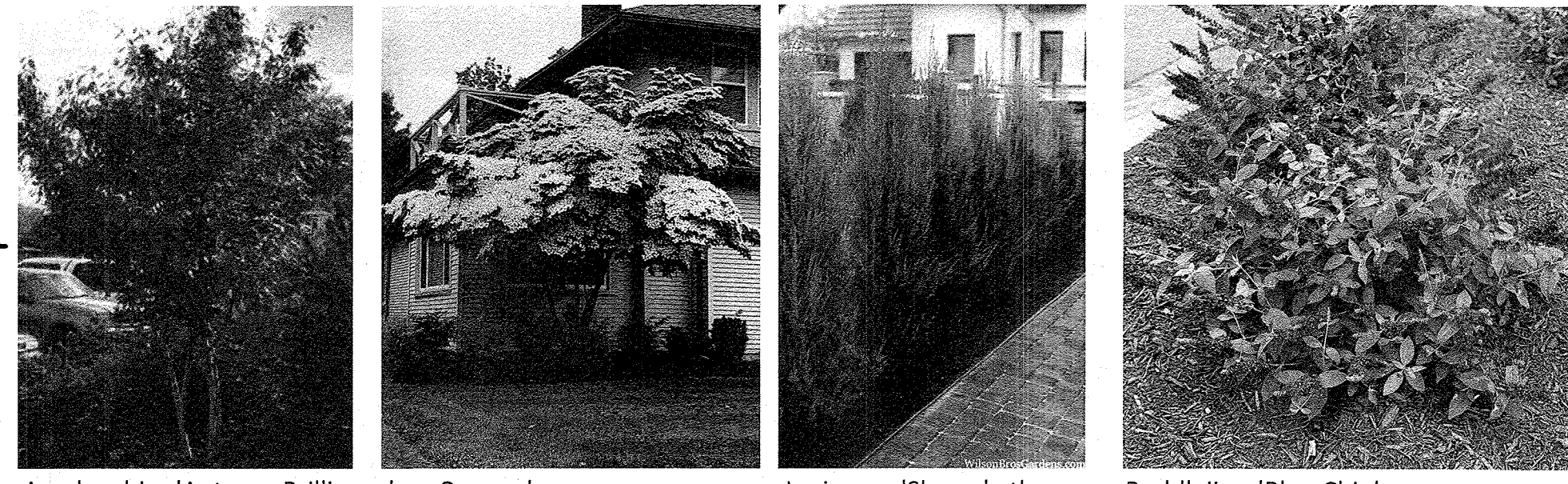
PLANTING NOTES

1. PLANT MATERIAL SHALL BE FURNISHED AND INSTALLED AS INDICATED, INCLUDING ALL LABOR, MATERIALS, PLANTS, EQUIPMENT, INCIDENTALS, AND CLEAN-UP.
2. THE CONTRACTOR SHALL BE RESPONSIBLE FOR PLANTING AT CORRECT GRADES AND ALIGNMENT. LAYOUT TO BE APPROVED BY LA PRIOR TO INSTALLATION.
3. PLANTS SHALL BE TYPICAL OF THEIR SPECIES AND VARIETY, HAVE NORMAL GROWTH HABITS, WELL DEVELOPED BRANCHES, DENSELY FOLIATED, VIGOROUS ROOT SYSTEMS AND BE FREE FROM DEFECTS AND INJURIES.
4. CONTRACTOR SHALL REPORT ANY SOIL OR DRAINAGE CONDITIONS CONSIDERED DETRIMENTAL TO THE GROWTH OF PLANT MATERIAL.
5. ALL PLANT MATERIAL SHALL BE GUARANTEED BY THE CONTRACTOR TO BE IN VIGOROUS GROWING CONDITION. PROVISIONS SHALL BE MADE FOR A GROWTH GUARANTEE OF AT LEAST ONE YEAR FROM THE DATE OF ACCEPTANCE FOR TREES AND SHRUBS. REPLACEMENTS SHALL BE MADE AT THE BEGINNING OF THE FIRST SUCCEEDING PLANTING SEASON. ALL REPLACEMENTS SHALL HAVE A GUARANTEE EQUAL TO THAT STATED ABOVE.
6. INsofar AS IT IS PRACTICABLE, PLANT MATERIAL SHALL BE PLANTED ON THE DAY OF DELIVERY. IN THE EVENT THIS IS NOT POSSIBLE, THE CONTRACTOR SHALL PROTECT, IRRIGATE & CARE FOR STOCK NOT PLANTED.
7. QUALITY AND SIZE OF PLANTS, SPREAD OF ROOTS, AND SIZE OF BALLS SHALL BE IN ACCORDANCE WITH ANSI 260 (REV. 1980) "AMERICAN STANDARD FOR NURSERY STOCK" AS PUBLISHED BY THE AMERICAN ASSOCIATION OF NURSERYMEN, INC.
8. ALL PLANTS SHALL BE PLANTED IN AMENDED TOP SOIL THAT IS THOROUGHLY WATERED AND TAMPED AS BACK FILLING PROGRESSES. PLANTING MIX TO BE AS SHOWN ON PLANTING DETAILS. LARGE PLANTING AREAS TO INCORPORATE FERTILIZER AND SOIL CONDITIONERS AS STATED IN PLANTING SPECIFICATIONS.
9. PLANTS SHALL NOT BE BOUND WITH WIRE OR ROPE AT ANY TIME SO AS TO DAMAGE THE BARK OR BREAK BRANCHES. PLANTS SHALL BE HANDLED FROM THE BOTTOM OF THE BALL ONLY.
10. PLANTING OPERATIONS SHALL BE PERFORMED DURING PERIODS WITHIN THE PLANTING SEASON WHEN WEATHER AND SOIL CONDITIONS ARE SUITABLE AND IN ACCORDANCE WITH ACCEPTED LOCAL PRACTICE. PLANTS SHALL NOT BE INSTALLED IN TOPSOIL THAT IS IN A MUDDY OR FROZEN CONDITION.
11. NO PLANT, EXCEPT GROUND COVERS, SHALL BE PLANTED LESS THAN TWO FEET FROM EXISTING STRUCTURES AND SIDEWALKS.
12. SET ALL PLANTS PLUMB AND STRAIGHT. SET AT SUCH LEVEL THAT A NORMAL OR NATURAL RELATIONSHIP TO THE CROWN OF THE PLANT WITH THE GROUND SURFACE WILL BE ESTABLISHED. LOCATE PLANT IN THE CENTER OF THE PIT.
13. ALL INJURED ROOTS SHALL BE PRUNED UTILIZING CLEAN, SHARP TOOLS TO MAKE CLEAN ENDS BEFORE PLANTING.
14. EACH TREE AND SHRUB SHALL BE PRUNED IN ACCORDANCE WITH STANDARD HORTICULTURAL PRACTICE TO PRESERVE NATURAL CHARACTER OF PLANT. PRUNING SHALL BE DONE WITH CLEAN, SHARP TOOLS.
15. ALL PLANTING BEDS SHALL BE MULCHED WITH 2" LAYER OF DOUBLE SHREDDED HARDWOOD BARK MULCH.
16. ALL DISTURBED AREAS TO BE TREATED WITH 3" TOP SOIL & SEEDING IN ACCORDANCE WITH PERMANENT STABILIZATION METHODS.

PLANT MATERIAL HOLDING

1. PROTECT ALL TREES AND SHRUBS THAT ARE TO REMAIN THROUGHOUT THE ENTIRE PROJECT. ALL PROTECTIVE FENCES AND BARRICADES MUST REMAIN INTACT DURING CONSTRUCTION. DO NOT USE THESE BARRICADES AS AREAS FOR STORAGE AND STOCKPILING. BARRICADES SHALL BE KEPT FREE AND CLEAR OF DEBRIS AND MATERIALS AT ALL TIMES.
2. EXISTING PLANTS THAT ARE TAGGED BY LANDSCAPE ARCHITECT FOR TRANSPLANTING ARE TO BE MOVED TO A TEMPORARY HOLDING LOCATION TO BE LOCATED ON THE PREMISES AS DIRECTED BY LANDSCAPE ARCHITECT.
3. CONTRACTOR SHALL PROVIDE A TEMPORARY AUTOMATED WATERING SYSTEM FOR THE PURPOSE OF MAINTAINING THESE PLANTS.
4. PLANTS SHALL BE HEALED IN OVER THE TOP OF EACH ROOT BALL WITH WOOD CHIP MULCH FOR ADDED PROTECTION FROM DRYING AND STABILITY FROM OVERTURNING.
5. SURROUND HOLDING NURSERY WITH 4' BARRIER FENCING. AN IDEAL LOCATION SHOULD INCLUDE AT LEAST 3 HOURS OF SUNLIGHT BUT NOT MORE THAN 6 HOURS OF DIRECT LIGHT EACH DAY.

PLANT IMAGES



Panicum 'Northwind' Alchemilla mollis Allium x 'Millenium' Baptisia australis Paeonia lactiflora 'Shirley Temple' Salvia nemorosa 'Caradonna' Stachys byzantina 'Big Ears' Picea omorika Tsuga canadensis Picea abies 'Cupressina' Nyssa sylvatica Prunus x 'Kwanzan' BLOCK WALL & FENCE