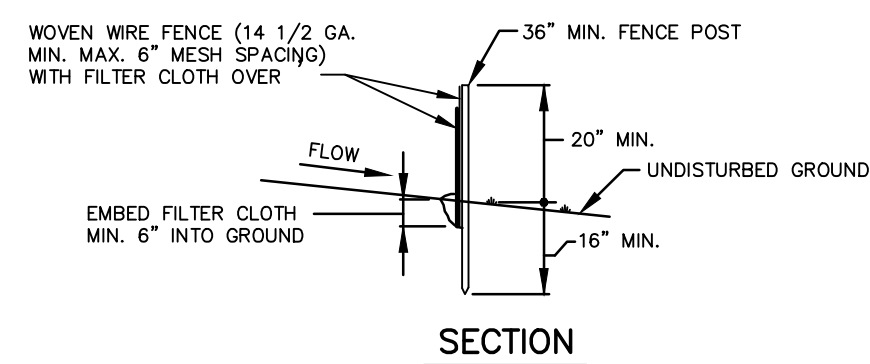
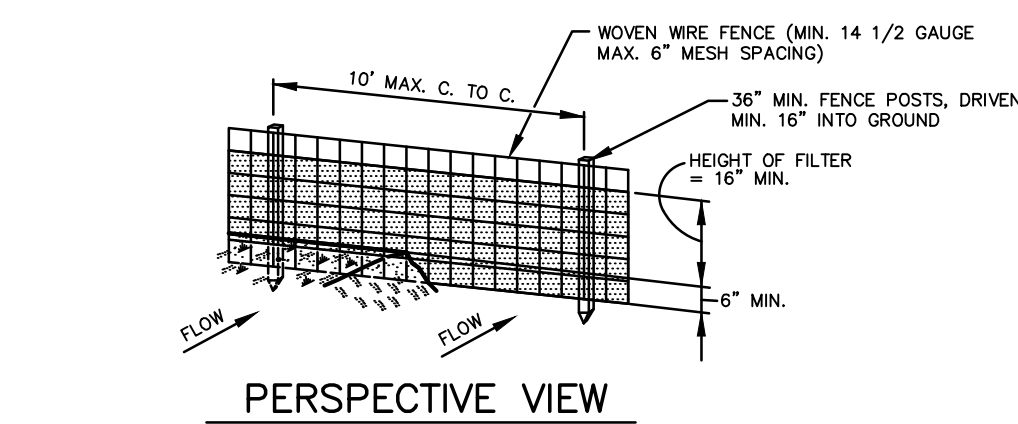


**CONSTRUCTION SPECIFICATIONS**

- STONE SIZE - USE 2" STONE, OR RECLAIMED OR RECYCLED CONCRETE EQUIVALENT.
- LENGTH - NOT LESS THAN 50 FEET (EXCEPT ON A SINGLE RESIDENCE LOT WHERE A 30 FOOT MINIMUM LENGTH WOULD APPLY.)
- THICKNESS - NOT LESS THAN (6) INCHES.
- WIDTH - TWELVE (12) FOOT MINIMUM, BUT NOT LESS THAN THE FULL WIDTH AT POINTS WHERE INGRESS OR EGRESS OCCURS. TWENTY-FOUR (24) FOOT IF SINGLE ENTRANCE TO SITE.
- FILTER CLOTH - WILL BE PLACED OVER THE ENTIRE AREA PRIOR TO PLACING OF STONE.
- SURFACE WATER - ALL SURFACE WATER FLOWING OR DIVERTED TOWARD CONSTRUCTION ENTRANCES SHALL BE PIPED ACROSS THE ENTRANCE. IF PIPING IS IMPRACTICAL, A MOUNTING BEAM WITH 5:1 SLOPES WILL BE PERMITTED.
- MAINTENANCE - THE ENTRANCE SHALL BE MAINTAINED IN A CONDITION WHICH WILL PREVENT TRACKING OR FLOWING OF SEDIMENT ONTO PUBLIC RIGHTS-OF-WAY. ALL SEDIMENT SPILLED, DROPPED, WASHED OR TRACKED ONTO PUBLIC RIGHTS-OF-WAY MUST BE REMOVED IMMEDIATELY.
- WHEN WASHING IS REQUIRED, IT SHALL BE DONE ON AN AREA STABILIZED WITH STONE AND WHICH DRAINS INTO AN APPROVED SEDIMENT TRAPPING DEVICE.
- PERIODIC INSPECTION AND NEEDED MAINTENANCE SHALL BE PROVIDED AFTER EACH RAIN.

**STABILIZED CONSTRUCTION ENTRANCE**

NTS

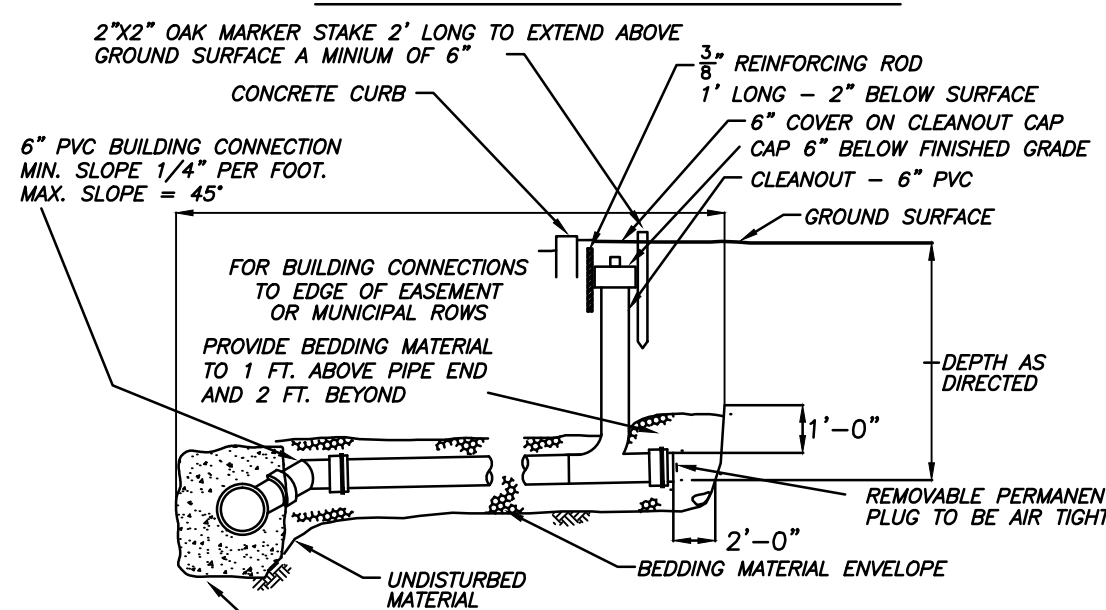
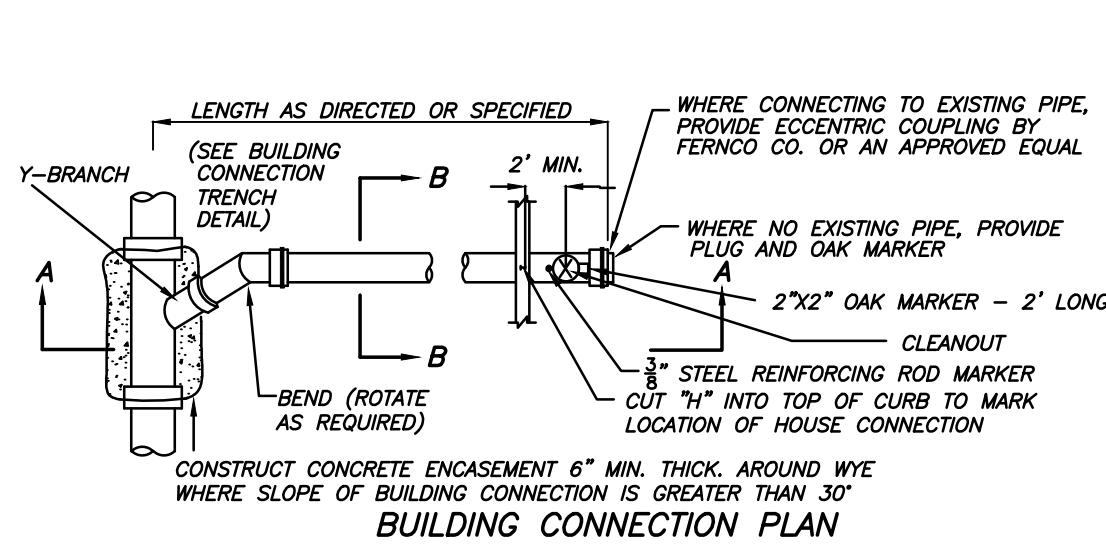


**CONSTRUCTION NOTES FOR FABRICATED SILT FENCE**

- WOVEN WIRE FENCE TO BE FASTENED SECURELY TO FENCE POSTS WITH WIRE TIES OR STAPLES.
  - FILTER CLOTH TO BE FASTENED SECURELY TO WOVEN WIRE FENCE WITH TIES SPACED EVERY 24" AT TOP AND MID SECTION.
  - WHEN TWO SECTIONS OF FILTER CLOTH ADJOIN EACH OTHER THEY SHALL BE OVERLAPPED BY SIX INCHES AND FOLDED.
  - MAINTENANCE SHALL BE PERFORMED AS NEEDED AND MATERIAL REMOVED WHEN "BULGES" DEVELOP IN THE SILT FENCE.
- POSTS: STEEL EITHER "T" OR "U" TYPE OR 2" HARDWOOD.  
 FENCE: WOVEN WIRE 14 1/2 GA. 6" MAX. MESH OPENING.  
 FILTER CLOTH: FILTER X, MIRAFI 100X, STABILINKA T140N, OR APPROVED EQUAL.  
 PREFABRICATED UNIT: GEOFAB, ENVIROFENCE, OR APPROVED EQUAL.

**WIRE REINFORCED SILT FENCE**

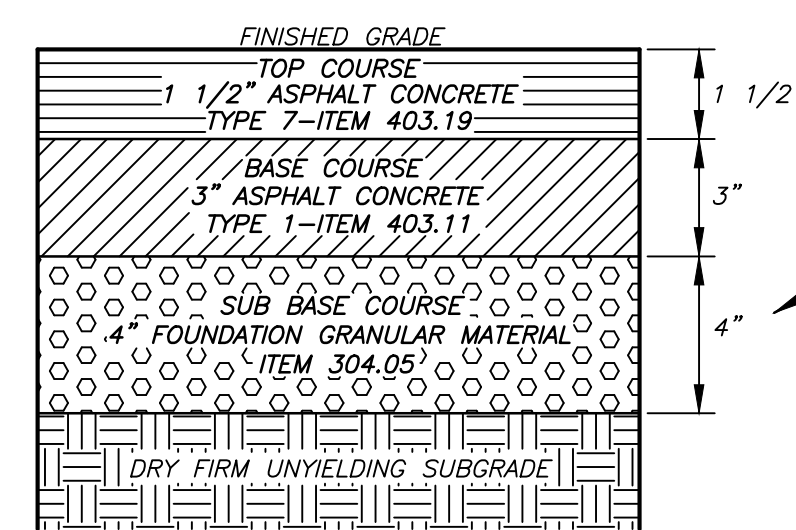
NTS



**BUILDING CONNECTION ELEVATION**

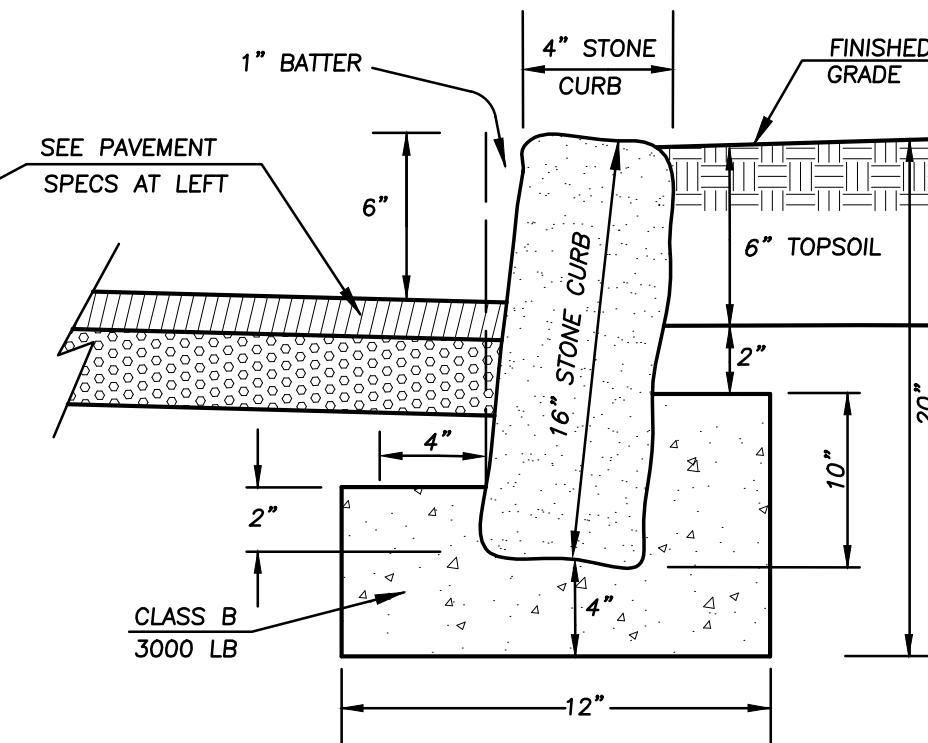
**TOWN OF ORANGETOWN BUILDING CONNECTION DETAIL**

NTS



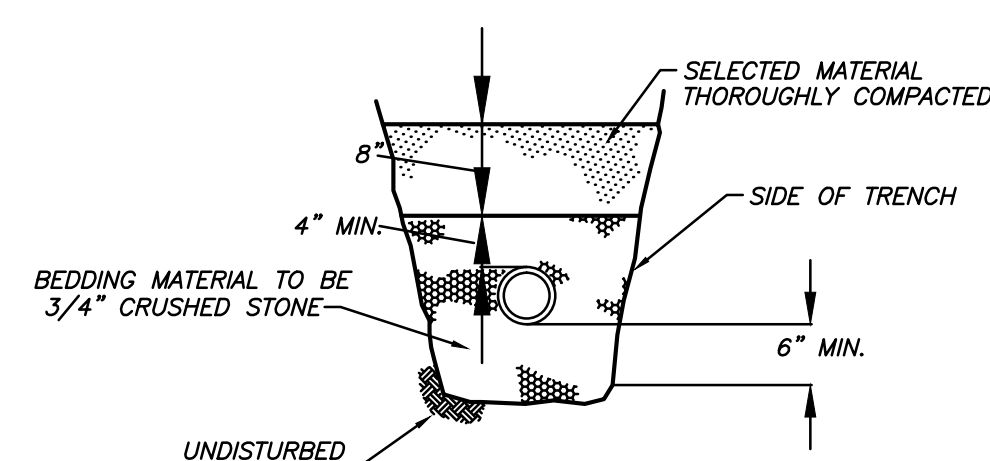
**PAVEMENT DETAIL**

NTS



**STONE CURB & DRIVEWAY DETAIL**

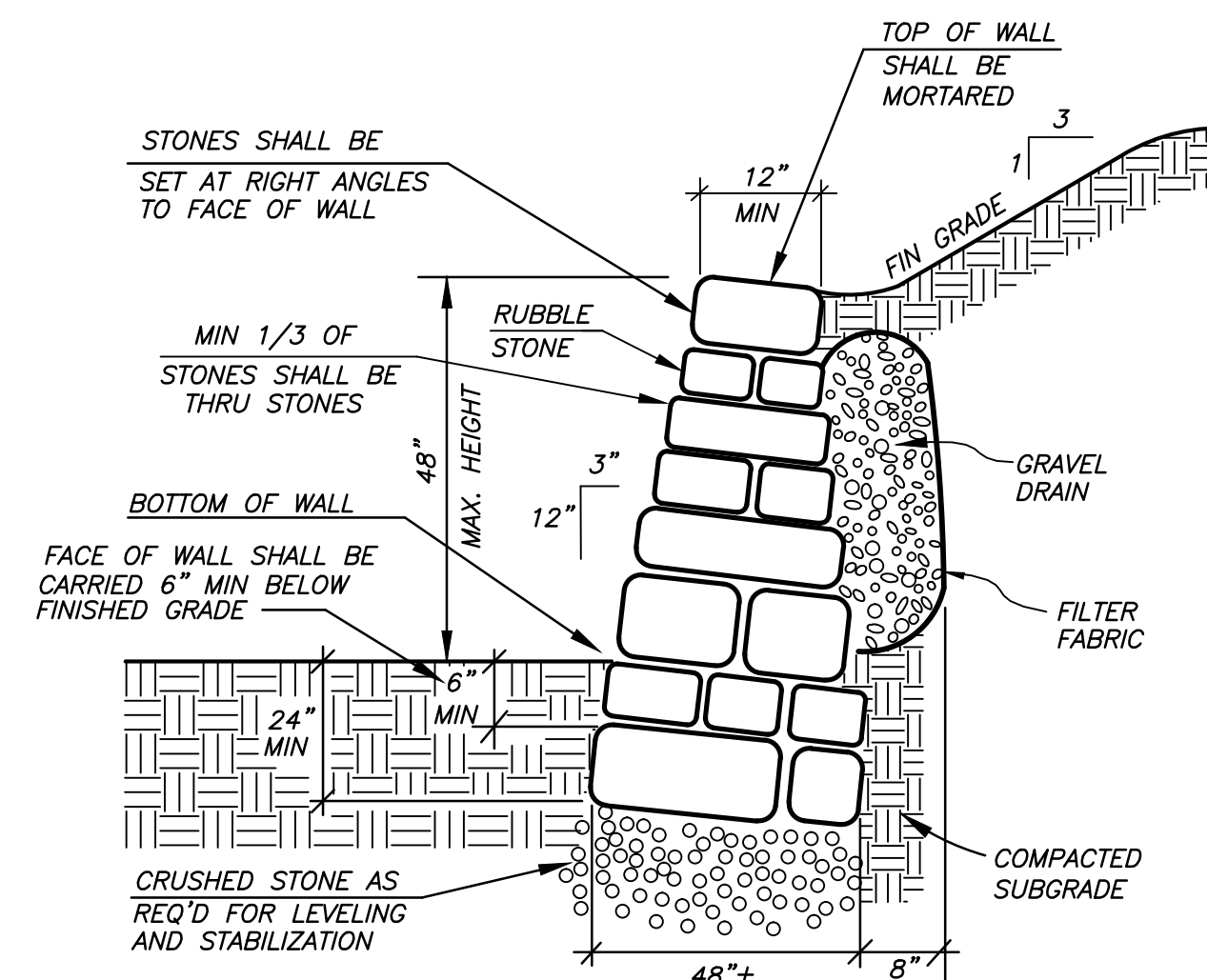
NTS



**SECTION B-B**

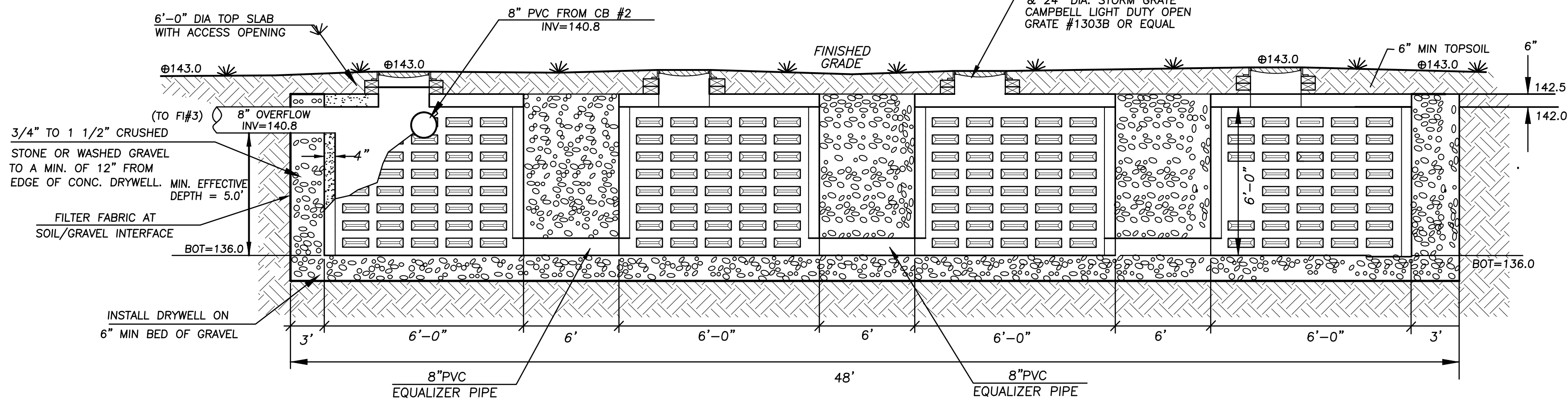
**TOWN OF ORANGETOWN BUILDING CONNECTION TRENCH DETAIL**

NTS



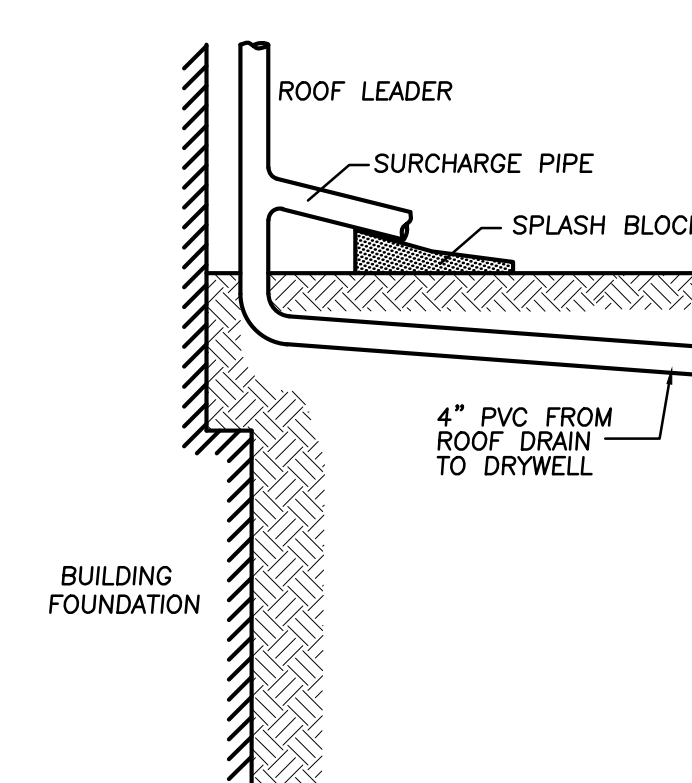
**DRY STONE WALL DETAIL**

NTS



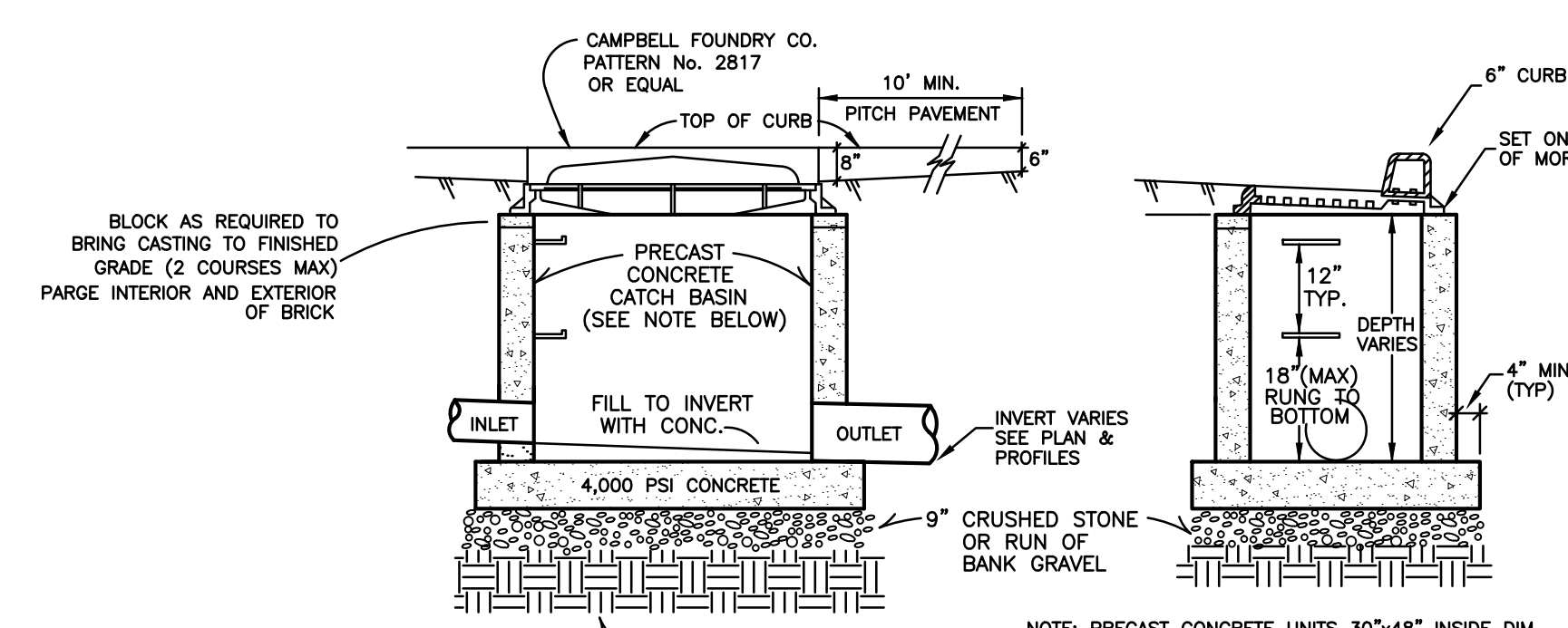
**6' PRECAST DRYWELLS DETAIL**

NTS



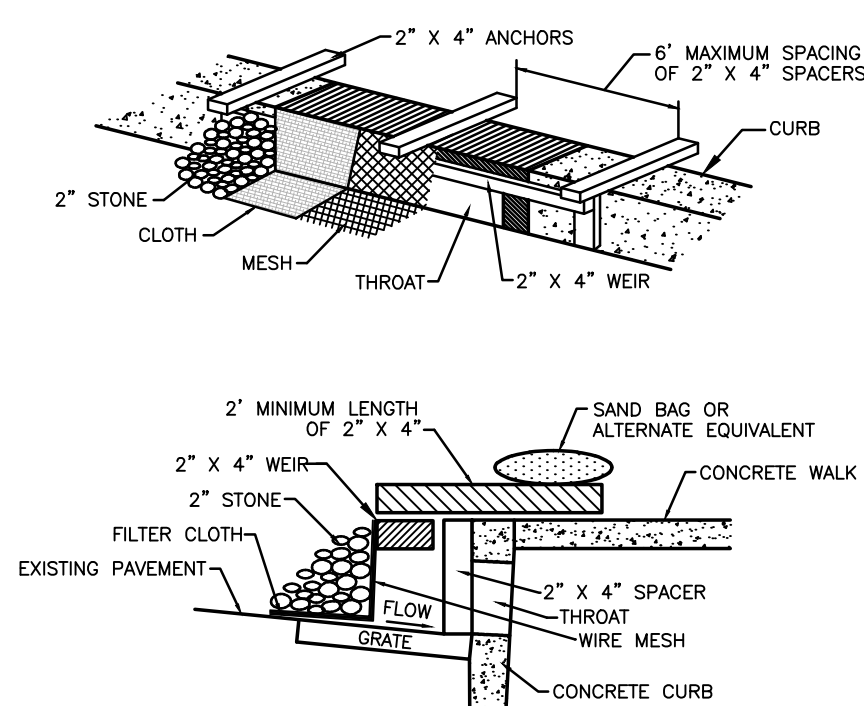
**ROOF LEADER WITH SURCHARGE PIPE FOR OVERFLOW**

N.T.S.



**CATCH BASIN DETAIL**

NTS

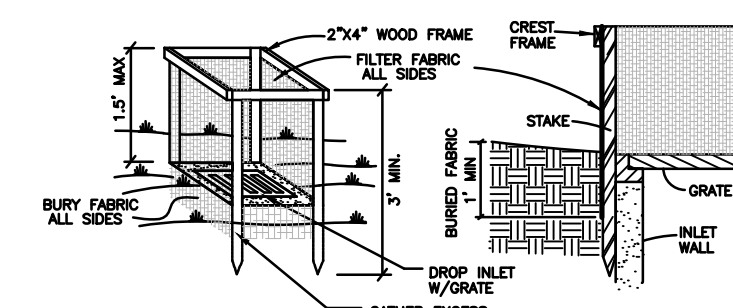


**CONSTRUCTION SPECIFICATIONS**

- FILTER FABRIC SHALL HAVE AN EOS OF 40-85.
- WOODEN FRAME SHALL BE CONSTRUCTED OF 2" X 4" CONSTRUCTION GRADE LUMBER.
- WIRE MESH ACROSS THROAT SHALL BE A CONTINUOUS PIECE 30 INCH MINIMUM WIDTH WITH A LENGTH 4 FEET LONGER THAN THE THROAT. IT SHALL BE SHAPED AND SECURELY NAILED TO A 2" X 4" WEIR.
- THE WEIR SHALL BE SECURELY NAILED TO 2" X 4" SPACERS 9 INCHES LONG SPACED NO MORE THAN 6 FEET APART.
- THE ASSEMBLY SHALL BE PLACED AGAINST THE INLET AND SECURED BY 2" X 4" ANCHORS 2 FEET LONG EXTENDING ACROSS THE TOP OF THE INLET AND HELD IN PLACE BY SANDBAGS OR ALTERNATE WEIGHTS.

**CURB INLET PROTECTION**

NTS



**CONSTRUCTION SPECIFICATIONS**

- FILTER FABRIC SHALL HAVE AN EOS OF 40-85. BURLAP MAY BE USED FOR SHORT TERM APPLICATIONS.
- CUT FABRIC FROM A CONTINUOUS ROLL TO ELIMINATE JOINTS. IF JOINTS ARE NEEDED THEY WILL BE OVERLAPPED TO THE NEXT STAKE.
- STAKE MATERIALS WILL BE STANDARD 2"x4" WOOD OR EQUIVALENT METAL WITH A MINIMUM LENGTH OF 3 FEET.
- SPACE STAKES EVENLY AROUND INLET 3 FEET APART AND DRIVE A MINIMUM 18 INCHES DEEP. SPACES GREATER THAN 3 FEET MAY BE BRIDGED WITH THE USE OF WIRE MESH BEHIND THE FILTER FABRIC FOR SUPPORT.
- FABRIC SHALL BE EMBEDDED 1 FOOT MINIMUM BELOW THE GROUND AND BACKFILLED. IT SHALL BE SECURELY FASTENED TO THE STAKES AND FRAME.
- A 2"x4" WOOD FRAME SHALL BE COMPLETED AROUND THE CREST OF THE FABRIC FOR OVER FLOW STABILITY.

**DROP INLET PROTECTION**

NTS

5/23/24	REV-DETAILS
8/08/23	REV-DETAILS
12/12/18	DRYWELL GALLERY
DATE	REVISIONS
GDANSKI CONSULTANTS, INC.	
STATE OF NEW YORK PAUL GDANSKI REGISTERED PROFESSIONAL ENGINEER NYS LIC. 075890	
STATE OF NEW YORK JAY A. GREENWELL, PLS REGISTERED PROFESSIONAL LAND SURVEYOR NYS LIC. # 49676	

<b>DETAILS</b>	
<b>SO. ORANGETOWN AMBULANCE CORPS</b>	
TOWN OF ORANGETOWN ROCKLAND COUNTY, NEW YORK	
<b>JAY A. GREENWELL, PLS, LLC</b>	
LAND SURVEYING - LAND PLANNING 34 WAYNE AVENUE, SUFFERN, NEW YORK, 10901 PHONE 845-357-0830 GREENWELLPLS@AOL.COM	
FILE 21838DETAIL	SCALE 1"=20'
DATE 11/20/18	JOB NO. 21838