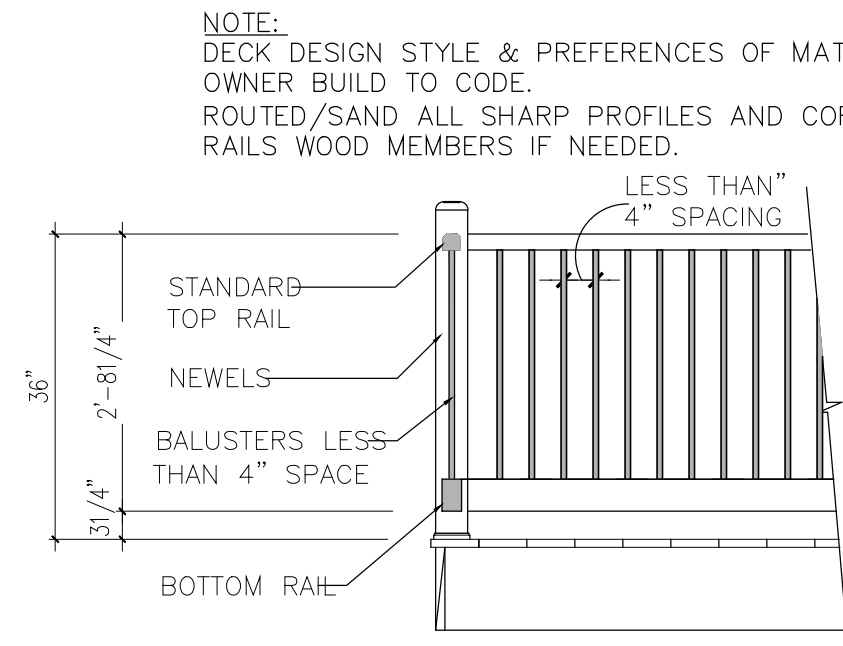
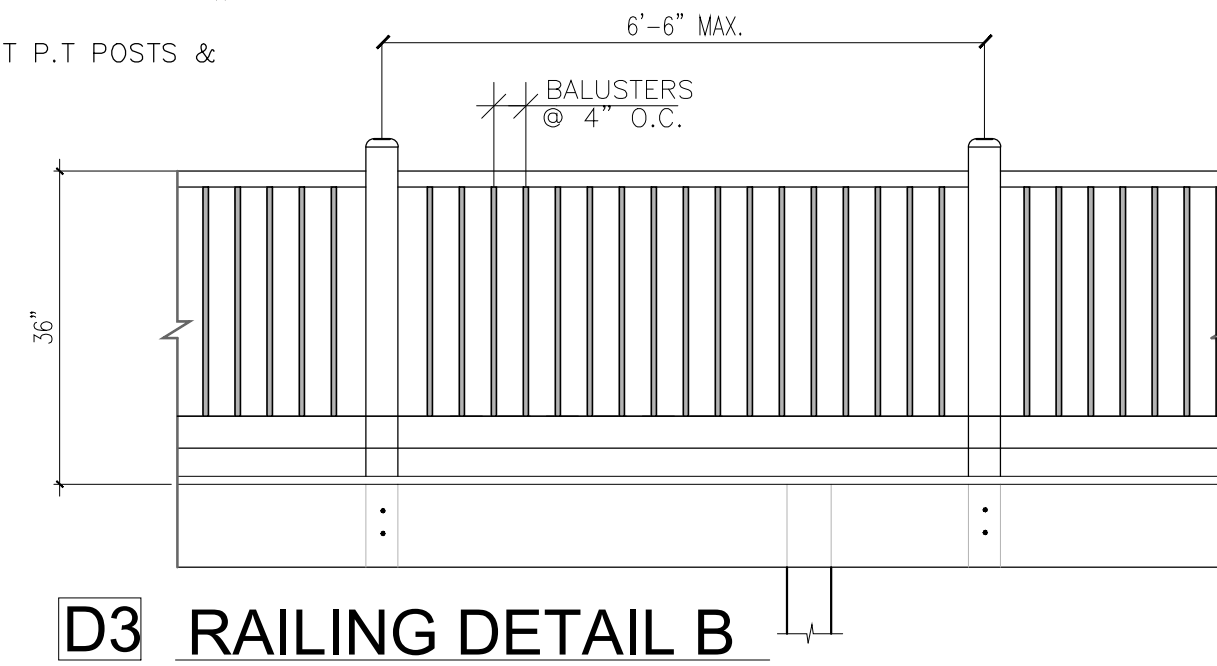


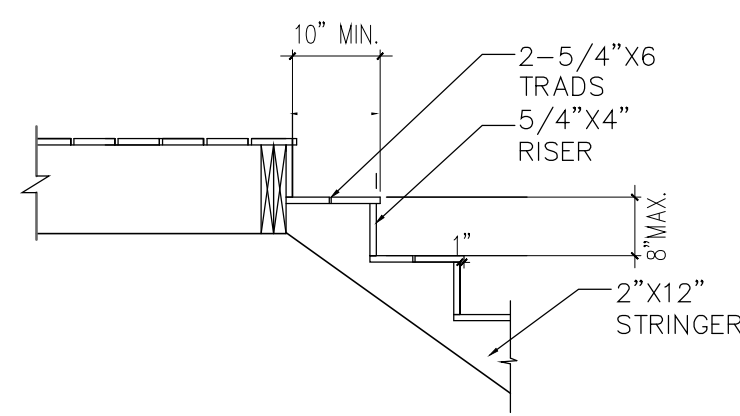
D1 SECTION-B
SCALE: 1/4"=1'-0"



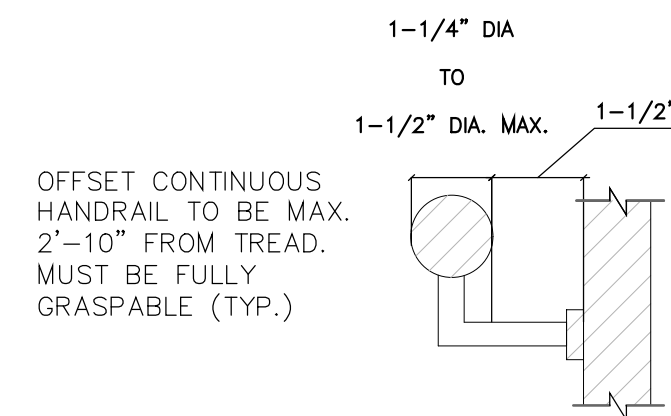
D2 DETAIL-RAIL
SCALE: 1/4"=1'-0"



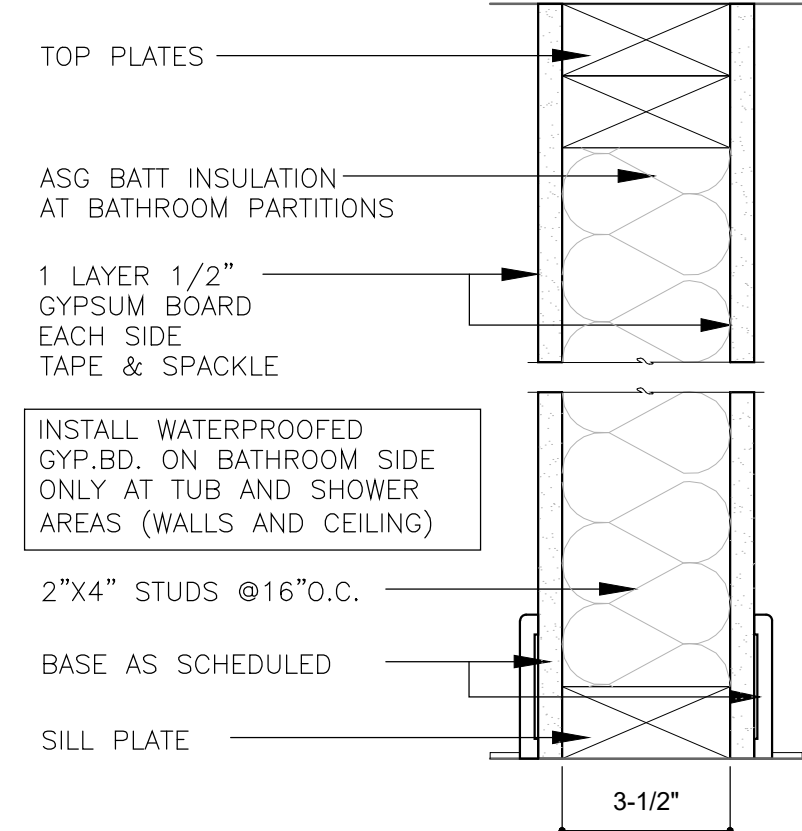
D3 RAILING DETAIL B
SCALE: 1/4"=1'-0"



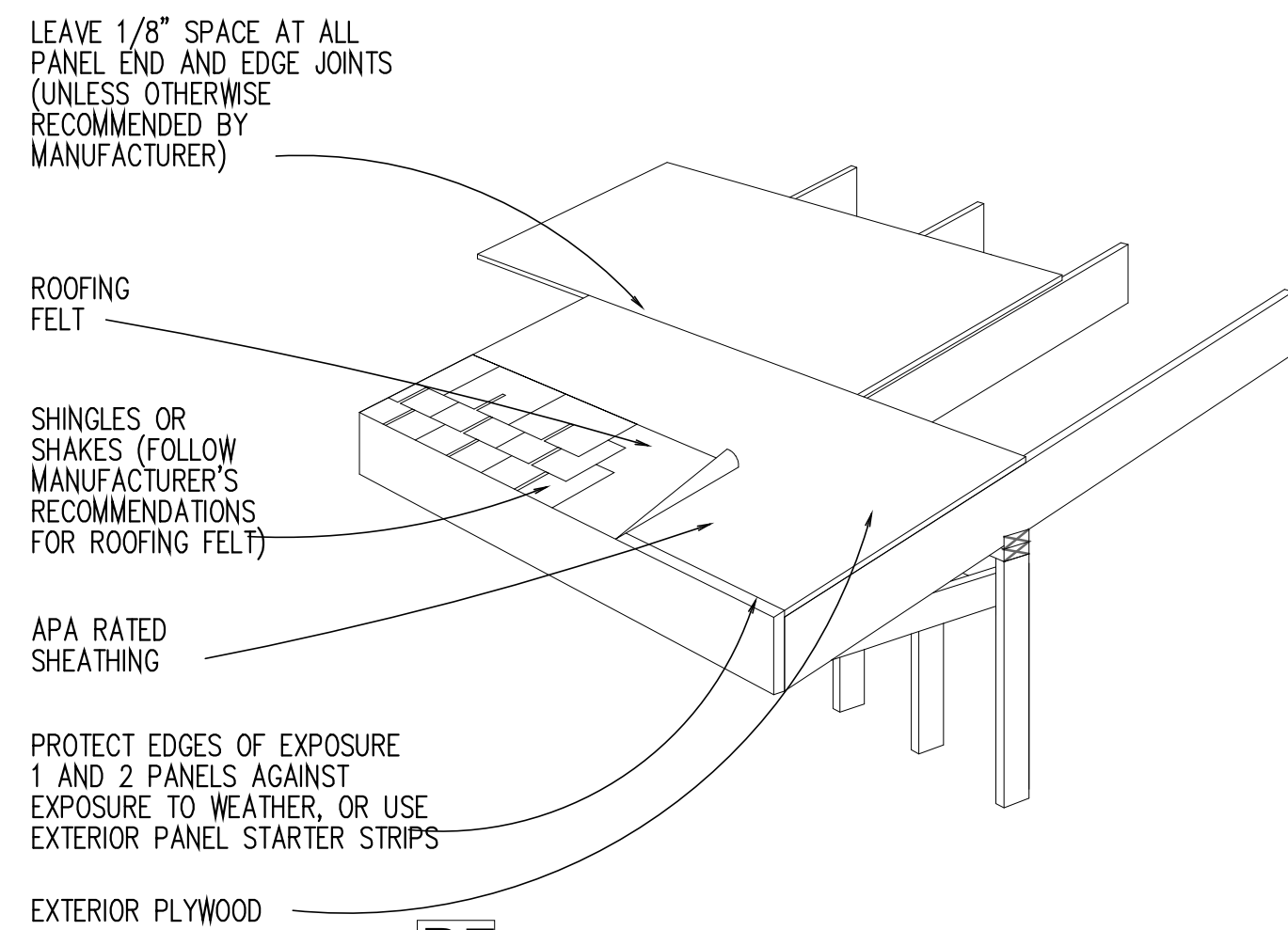
D4 STAIR DETAIL
NTS



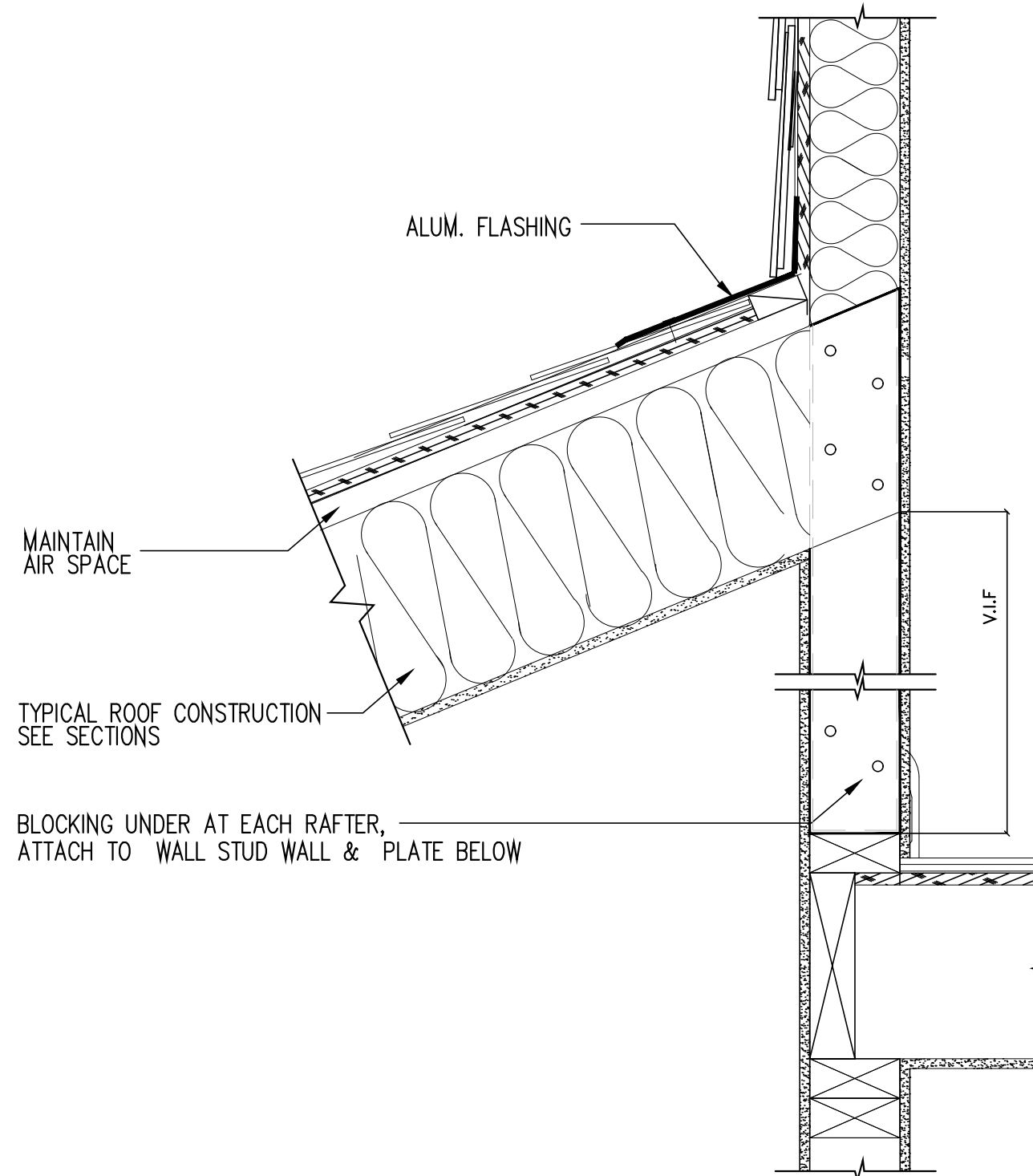
D5 TYP. CONTINUES HANDRAIL DETAIL AT NEW INTERIOR STAIRS



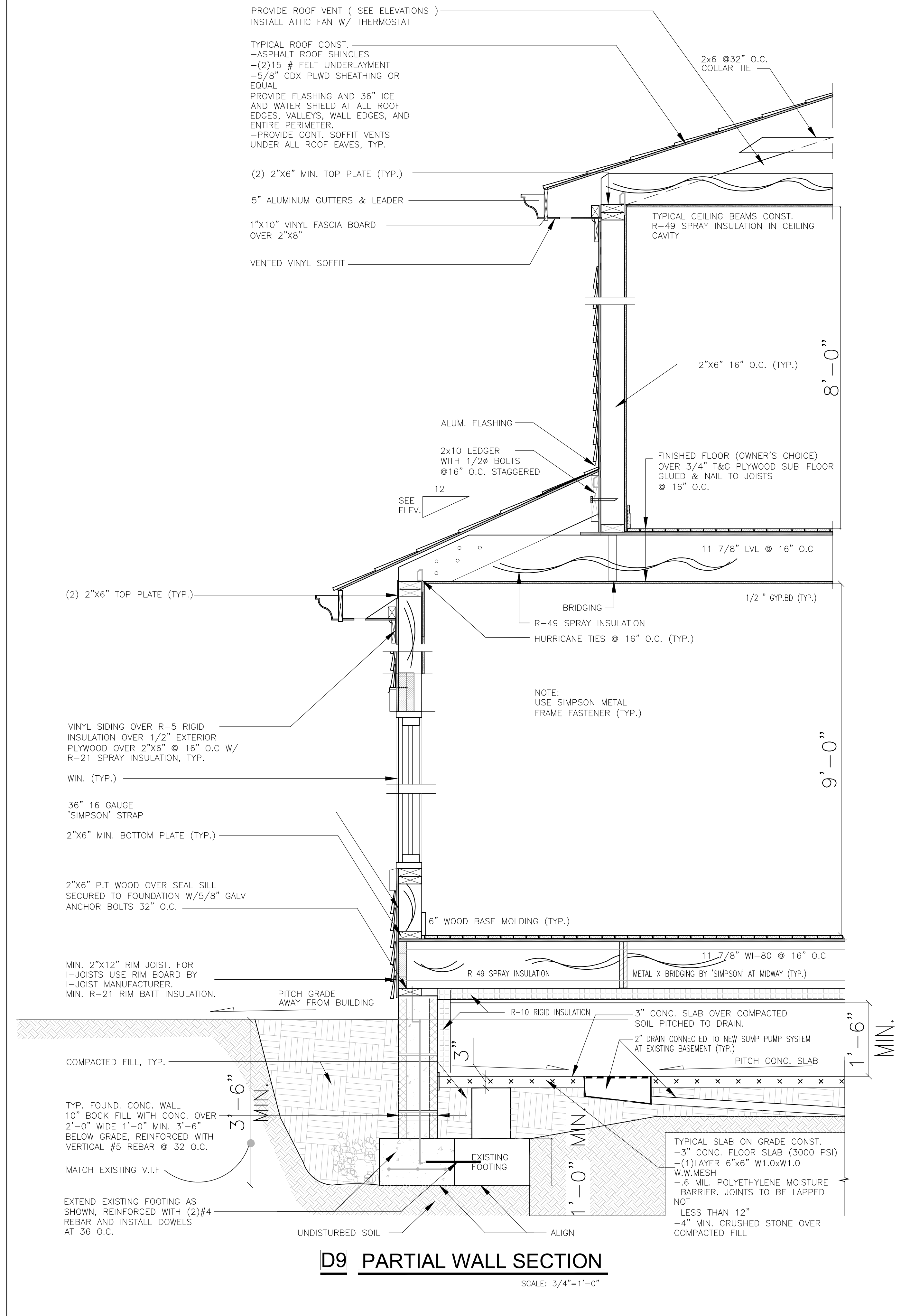
D6 INTERIOR WALL SECTION
SCALE: 3/8"=1'-0"



D7 ROOF DETAIL
N.T.C.



D9 PARTIAL WALL SECTION
SCALE: 3/4"=1'-0"



NOTE:
DECK DESIGN STYLE & PREFERENCES OF MATERIAL TO BE VERIFIED WITH OWNER BUILD TO CODE.
ROUTED/SAND ALL SHARP PROFILES AND CORNERS AT P.T POSTS & RAILS WOOD MEMBERS IF NEEDED.

PROVIDE ROOF VENT (SEE ELEVATIONS)
INSTALL ATTIC FAN W/ THERMOSTAT

TYPICAL ROOF CONST.
-ASPHALT ROOF SHINGLES
-(2)15 # FELT UNDERLAYMENT
-5/8" CDX PLWD SHEATHING OR EQUAL
PROVIDE FLASHING AND 36" ICE AND WATER SHIELD AT ALL ROOF EDGES, VALLEYS, WALL EDGES, AND ENTIRE PERIMETER.
-PROVIDE CONT. SOFFIT VENTS UNDER ALL ROOF EAVES, TYP.

(2) 2"x6" MIN. TOP PLATE (TYP.)
5" ALUMINUM GUTTERS & LEADER
1"x10" VINYL FASCIA BOARD OVER 2"x8"

ALUM. FLASHING
2x10 LEDGER WITH 1/2" BOLTS @16" O.C. STAGGERED

(2) 2"x6" TOP PLATE (TYP.)
BRIDGING
R-49 SPRAY INSULATION
HURRICANE TIES @ 16" O.C. (TYP.)

VINYL SIDING OVER R-5 RIGID INSULATION OVER 1/2" EXTERIOR PLYWOOD OVER 2"x6" @ 16" O.C W/ R-21 SPRAY INSULATION, TYP.

36" 16 GAUGE 'SIMPSON' STRAP
2"x6" MIN. BOTTOM PLATE (TYP.)
2"x6" P.T WOOD OVER SEAL SILL SECURED TO FOUNDATION W/5/8" GALV ANCHOR BOLTS 32" O.C.

MIN. 2"x12" RIM JOIST, FOR 1-JOISTS USE RIM BOARD BY 1-JOIST MANUFACTURER.
MIN. R-21 RIM BATT INSULATION.

EXTEND EXISTING FOOTING AS SHOWN, REINFORCED WITH (2)#4 REBAR AND INSTALL DOWELS AT 36" O.C.

2x6 @32" O.C. COLLAR TIE

2"x6" 16" O.C. (TYP.)

TYPICAL CEILING BEAMS CONST. R-49 SPRAY INSULATION IN CEILING CAVITY

11 7/8" LVL @ 16" O.C.

1/2" GYP.BD (TYP.)

NOTE: USE SIMPSON METAL FRAME FASTENER (TYP.)

6" WOOD BASE MOLDING (TYP.)

11 7/8" WI-80 @ 16" O.C.

METAL X BRIDGING BY 'SIMPSON' AT MIDWAY (TYP.)

R-49 SPRAY INSULATION

R-10 RIGID INSULATION

3" CONC. SLAB OVER COMPACTED SOIL PITCHED TO DRAIN.

2" DRAIN CONNECTED TO NEW SUMP PUMP SYSTEM AT EXISTING BASEMENT (TYP.)

PITCH CONC. SLAB

1'-0" MIN.

3" MIN.

5'-6" MIN.

UNDISTURBED SOIL

ALIGN

EXISTING FOOTING

TYPICAL SLAB ON GRADE CONST. -3" CONC. FLOOR SLAB (3000 PSI) -1 LAYER 6"x6" W1.0xW1.0 W.W.MESH -6 MIL. POLYETHYLENE MOISTURE BARRIER. JOINTS TO BE LAPPED NOT LESS THAN 12" -4" MIN. CRUSHED STONE OVER COMPACTED FILL