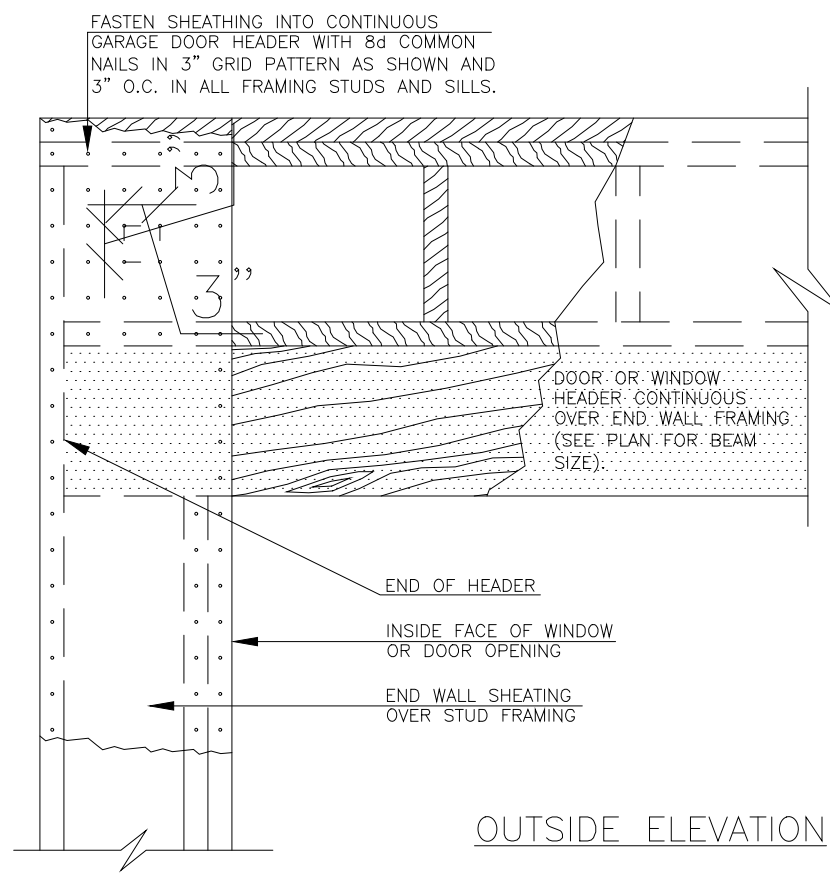


IMPORTANT CODE REQUIREMENT:
 AT CORNERS CONNECT THE TWO WALLS TOGETHER AS OUTLINED HEREIN TO PROVIDE OVERTURNING RESTRAINT. THESE DETAILS ARE ONLY FOR USE ON HOMES WITH FULLY SHEATHED PLYWOOD OR OSB EXTERIOR WALLS, PER NJIRC

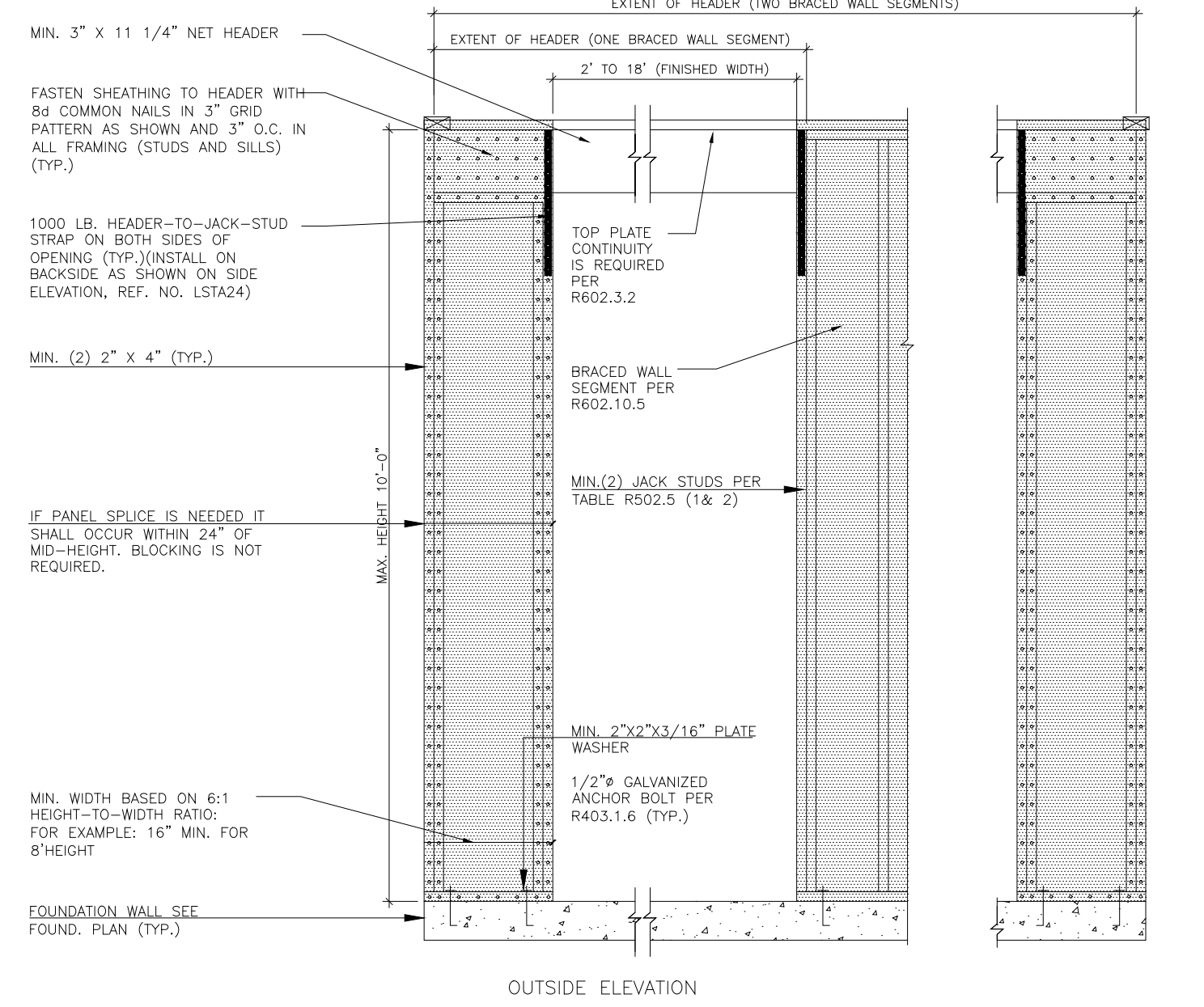
INSIDE/OUTSIDE CORNER DETAILS PER IRC

PLAN VIEW
 SCALE 3/4"=1'-0"



HEADER OVER NARROW END WALL

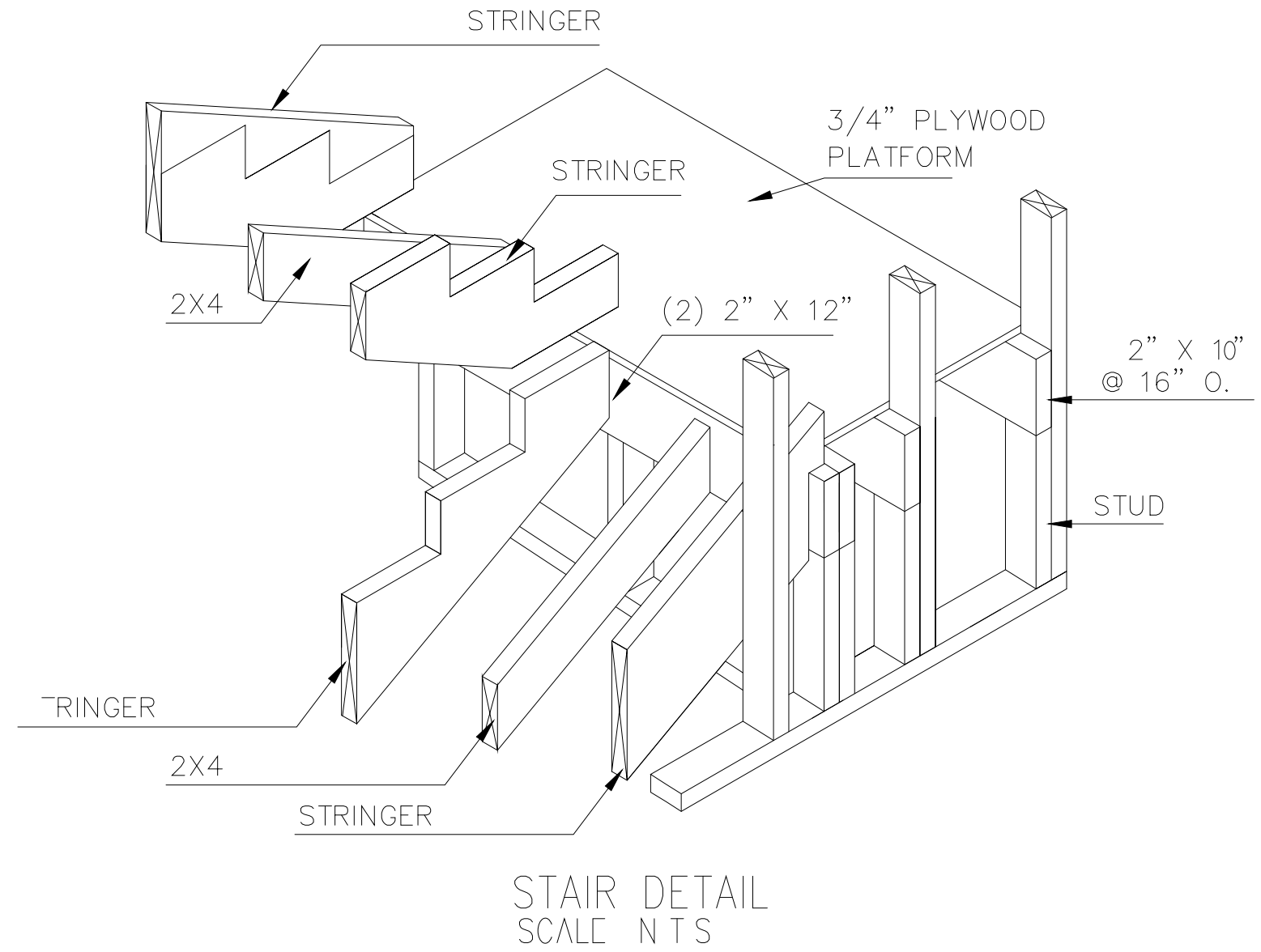
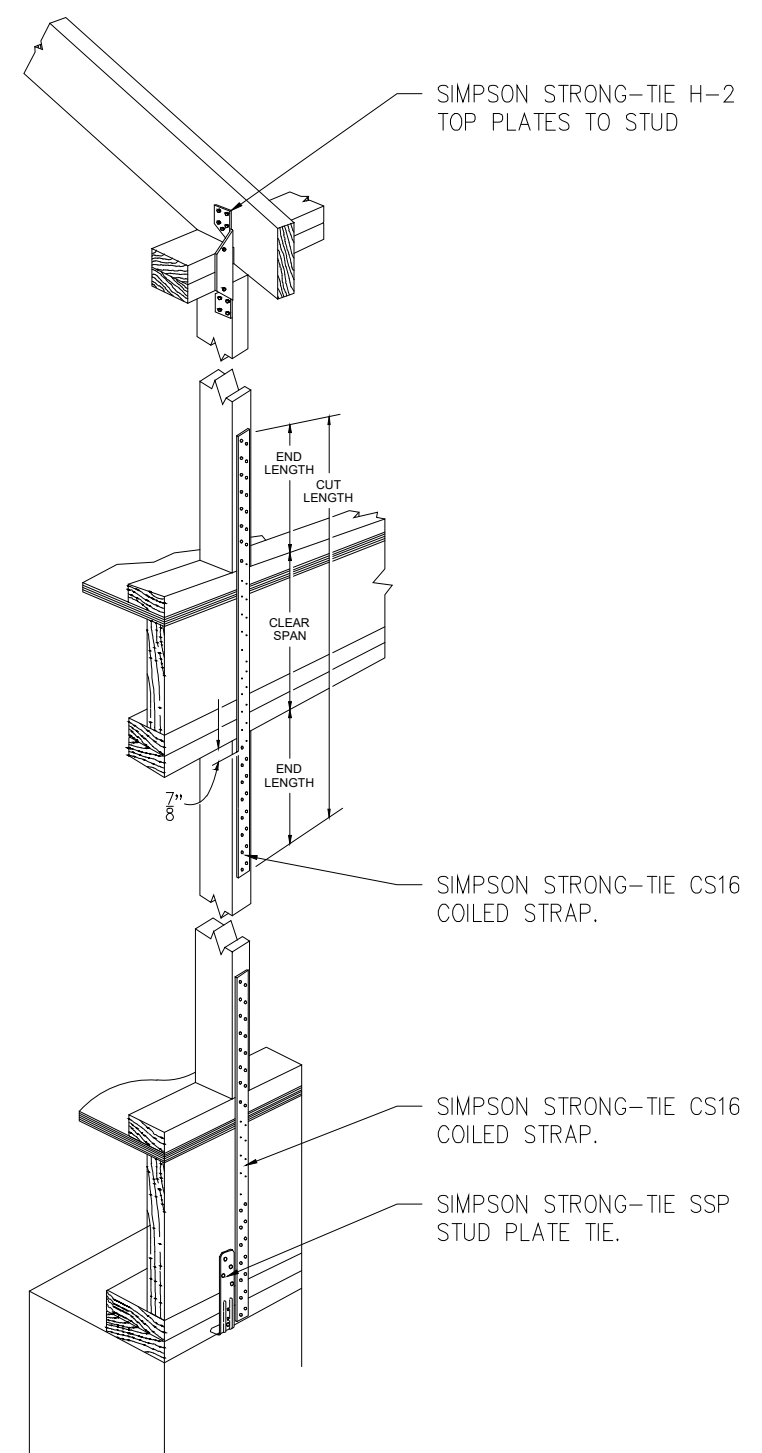
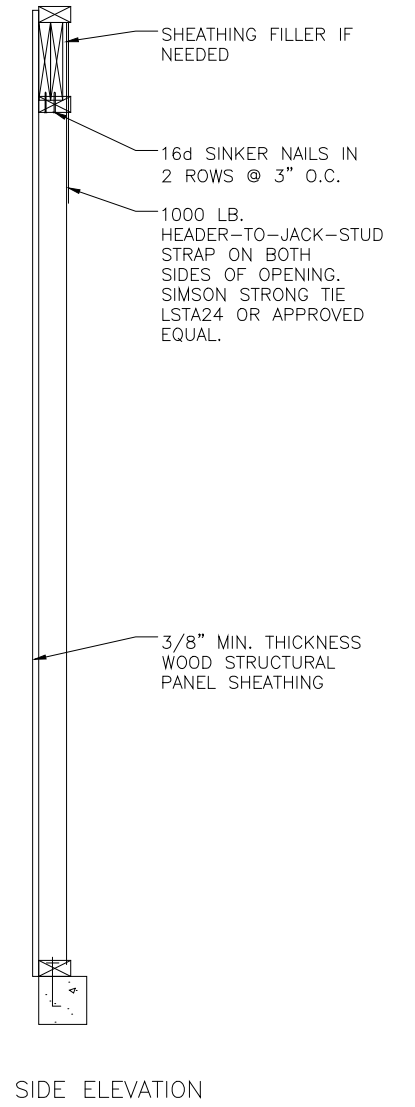
APA NARROW WALL BRACING METHOD
 SCALE 3/4"=1'-0"



IMPORTANT CODE REQUIREMENT:
 THESE DETAILS ARE ONLY FOR USE ON HOMES WITH FULLY SHEATHED PLYWOOD OR OSB EXTERIOR WALLS, PER IRC R602.10.5.

APA NARROW WALL BRACING METHOD w/OUT HOLD-DOWNS - OVER CONC. OR CMU FOU

TYPICAL ELEVATIONS
 SCALE 1/2"=1'-0"



WALL BRACING NOTES

- ALL EXTERIOR WALLS ARE TO BE CONSTRUCTED IN ACCORDANCE WITH IRC 602.10.5. PROVIDE CONTINUOUS WOOD STRUCTURAL PANEL SHEATHING INCLUDING AREAS ABOVE AND BELOW OPENINGS - MIN. 1/2" CDX PLYWOOD OR OSB RATED SHEATHING U.O.N. ON PLANS AND DETAILS.
- OVERLAP SHEATHING AT BUILDING CORNERS. REFER TO DETAIL 605A FOR CORNER FRAMING AND NAILING SPECS.
- BRACING WALL PANELS ARE TO BE PROVIDED AT EACH END OF BRACED WALL LINE, AT BUILDING CORNERS AND @25' O.C. IN A BRACED WALL LINE. PANEL WIDTH MAY BE AS NARROW AS 32" WIDE NEXT TO ENTRY DOOR AND 24" WIDE NEXT TO A WINDOW WITHOUT ANY HEADER EXTENSIONS OR SPECIAL NAILING SCHEDULES. MINIMUM PANEL WIDTH AT CORNERS ARE AS NOTED IN THE TABLE BELOW BASED ON SEISMIC DESIGN CATEGORY 'C' AND WALL HEIGHT MEASURED FROM SILL TO TOP PLATE.

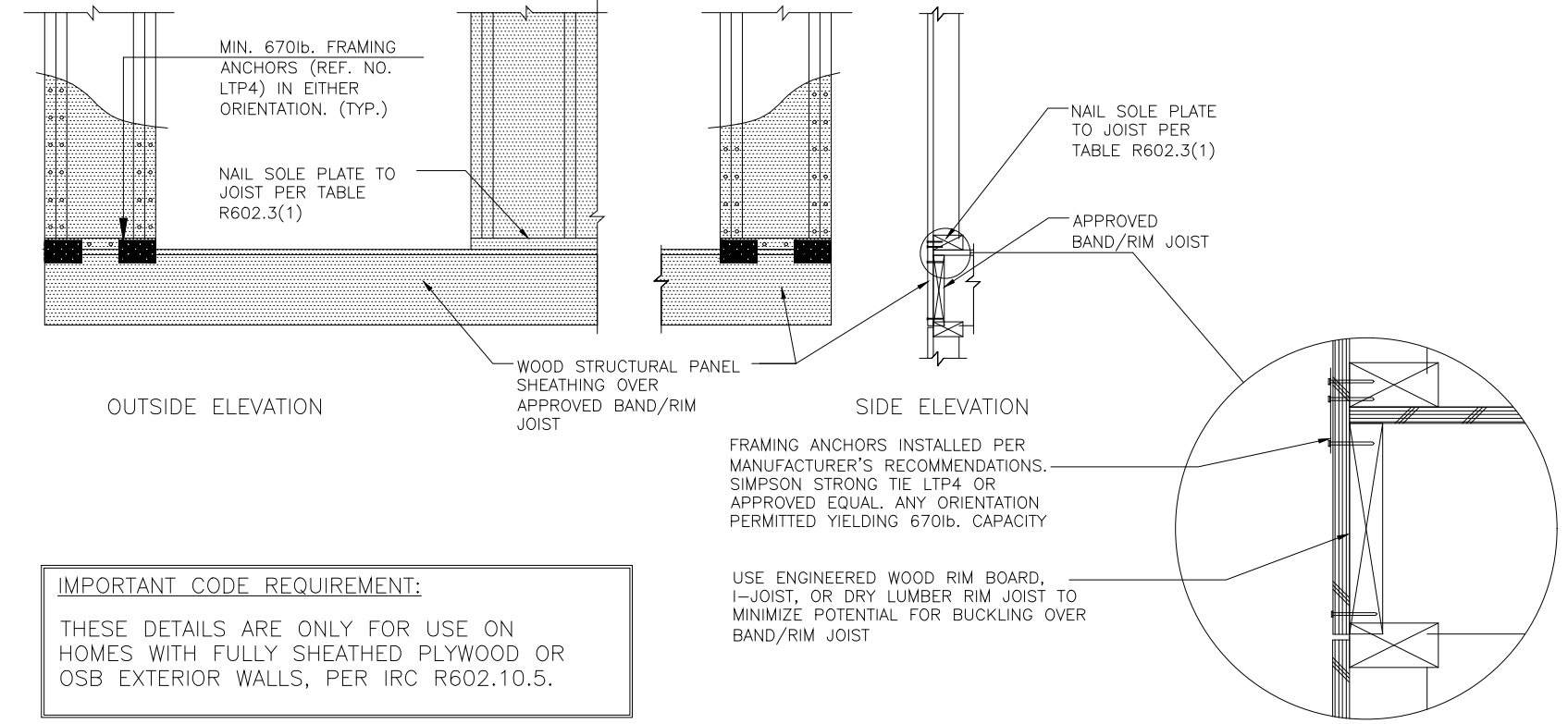
LENGTH OF SOLID PANEL AT CORNER	8" WALL	9" WALL	10" WALL	MAX. OPENING (% OF WALL HEIGHT)
48"	54"	60"	66"	100%(GAR. DOOR)
32"	36"	40"	44"	85% (DOOR)
24"	27"	30"	33"	65%(WINDOW)

*THE DIMENSIONS FOR A 65% HEIGHT OPENING MAY BE USED FOR 100% HEIGHT WHEN THE STRUCTURE IS ONLY ONE STORY, I.E., ONE STORY GARAGES.

- PERMITTED OFFSETS IN A BRACED WALL LINE - 4' MAX. WITH TOTAL OUT-TO-OUT OFFSET DIMENSION OF 8' MAX.
- IN SDC A-C BRACED WALL PANELS CAN OCCUR UP TO 12'6" FROM THE END OF WALL.
- USE THE APA NARROW WALL BRACING METHOD AT ALL LOCATIONS SHOWN ON PLAN AND WHEN CORNER CONDITIONS VARY FROM THE ABOVE VALUES. REFER TO DETAILS 605B THRU 605H.

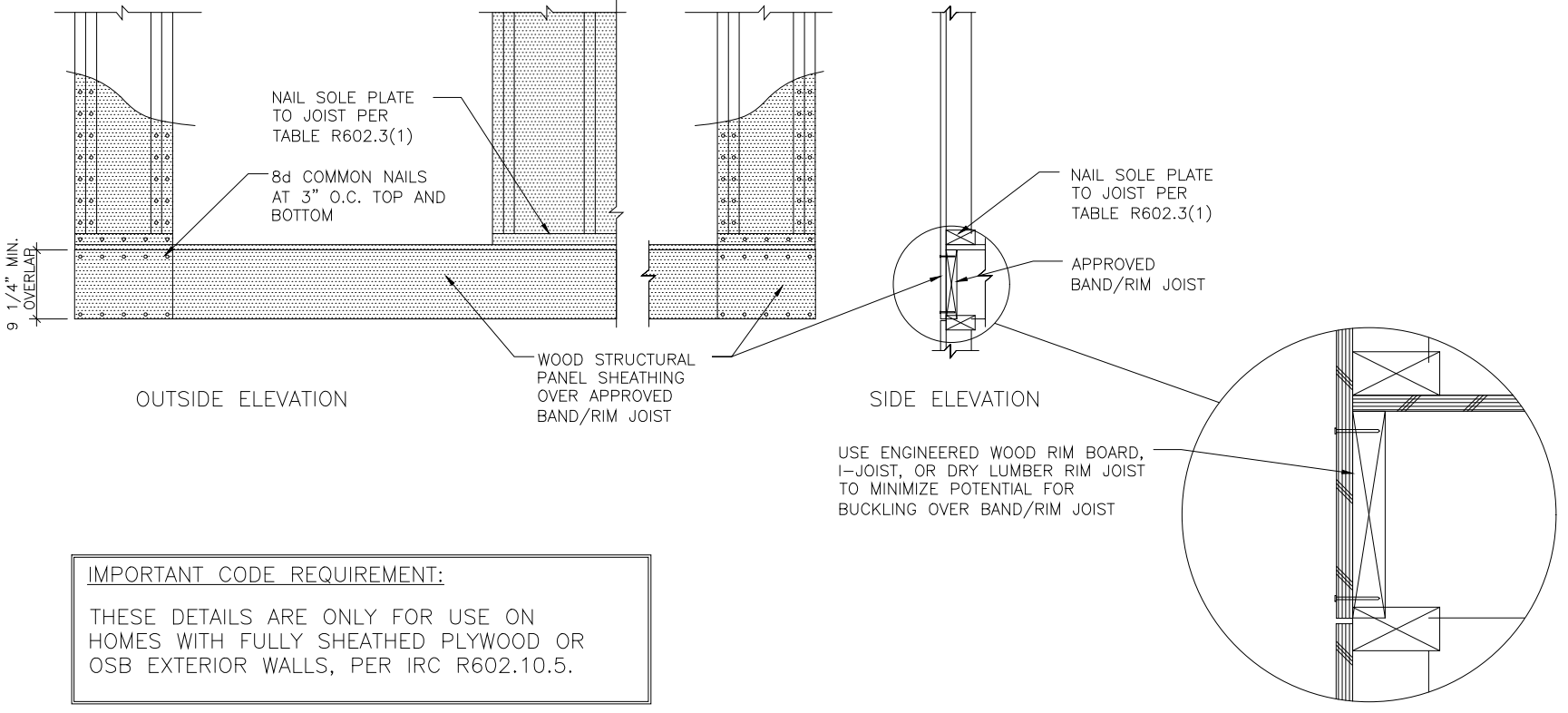
- THE MIN. WIDTH OF BRACED WALL PANEL FOR THE APA METHOD IS BASED ON WALL HEIGHT MEASURED FROM THE TOP OF THE HEADER TO THE BOTTOM OF SILL PLATE-10' MAX. CRIPPLE WALLS MAY BE BUILT ON TOP OF THE HEADER BUT DO NOT AFFECT THE HEIGHT USED TO DETERMINE THE MIN. BRACED PANEL WIDTH. APA NARROW WALL METHOD PERMITS 16" WIDE BRACING PANELS NEXT TO MOST ENTRY DOOR AND WINDOWS. DIMENSIONS ARE BASED ON MAINTAINING A 6:1 RATIO OF WALL HEIGHT TO CORNER PANEL WIDTH REGARDLESS OF THE HEIGHT OF THE ADJACENT WINDOW OR DOOR OPENING.

LENGTH OF SOLID PANEL AT CORNER	8" WALL	9" WALL	10" WALL
16"	18"	20"	22"



APA NARROW WALL BRACING METHOD w/OUT HOLD-DOWNS - FRAMING ANCHOR OPTION

TYPICAL ELEVATIONS OF NARROW WALL OVER RAISED WOOD FLOOR OR SECOND FLOOR
 SCALE 1/2"=1'-0"



IMPORTANT CODE REQUIREMENT:
 THESE DETAILS ARE ONLY FOR USE ON HOMES WITH FULLY SHEATHED PLYWOOD OR OSB EXTERIOR WALLS, PER IRC R602.10.5.

APA NARROW WALL BRACING METHOD w/OUT HOLD-DOWNS - STRUCTURAL PANEL OVERLAP

TYPICAL ELEVATIONS OF NARROW WALL OVER RAISED WOOD FLOOR OR SECOND FLOOR
 SCALE 1/2"=1'-0"

