

No.	Description	Date
1	ISSUED FOR SCHEMATIC DESIGN	5/24/24
2	ISSUED FOR 50% DESIGN DEVELOP.	7/6/24
3	ISSUED FOR 100% DESIGN DEVEL.	7/29/24
4	ISSUED FOR PRICING	8/16/24

DATABANK
LGA-4
 2000 Corporate Dr.
 Orangeburg, NY 10962
BUILDING # 02

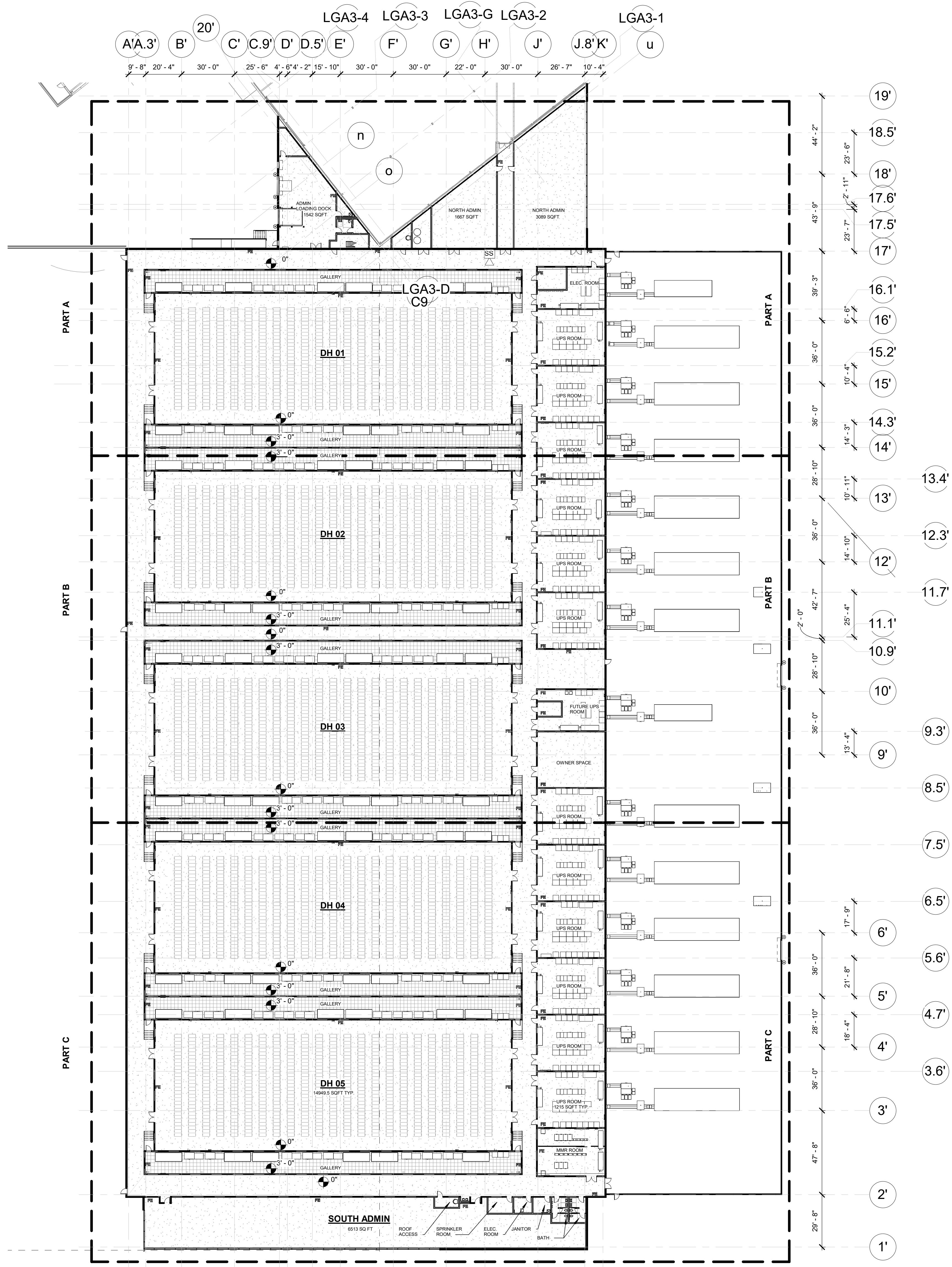
MASTERPLANS

Project Number: 2024-063P

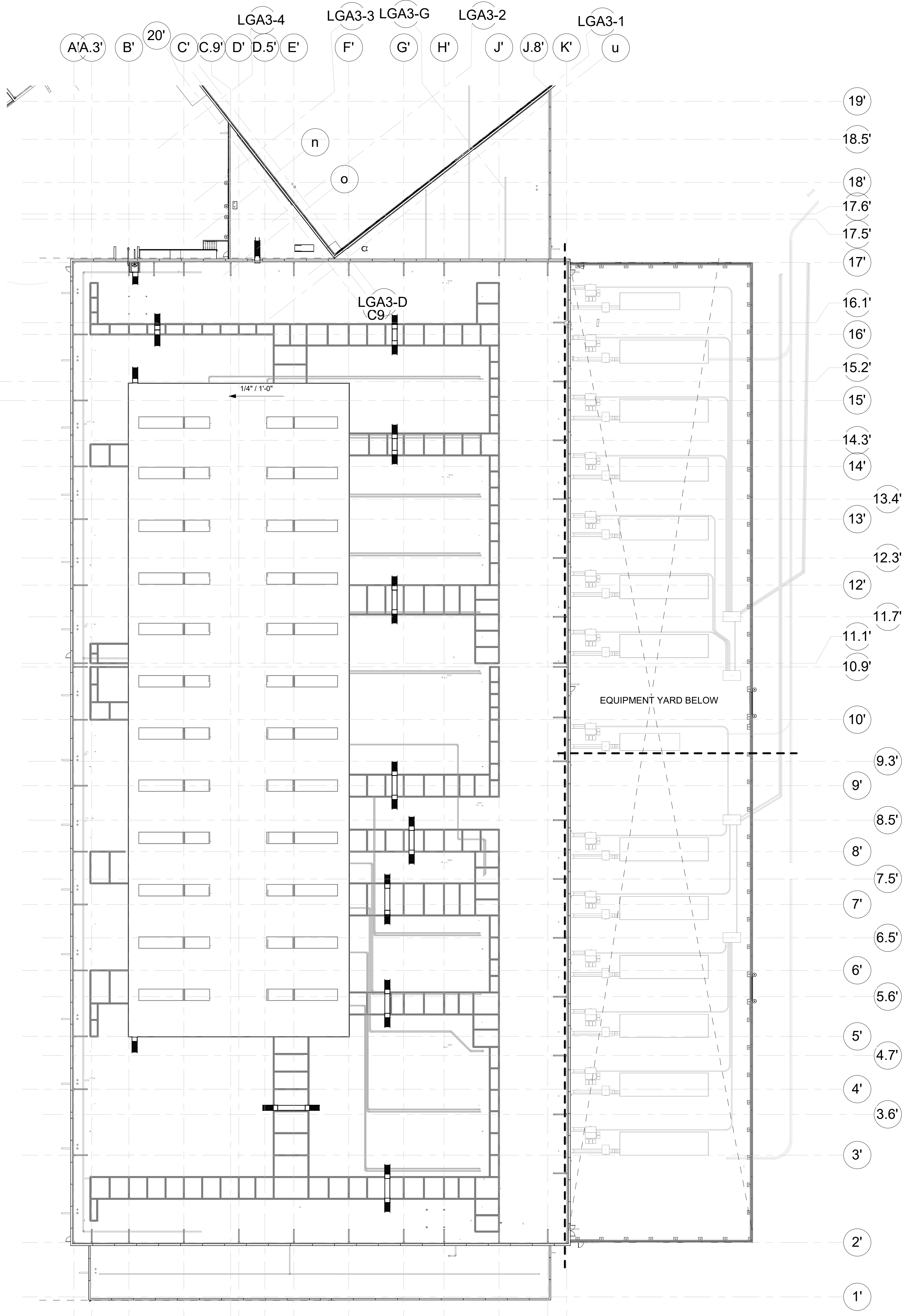
Date: 08/16/2024

Drawn By: J.R.

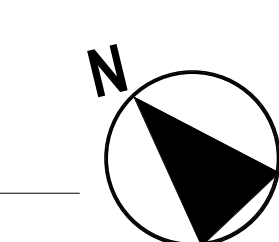
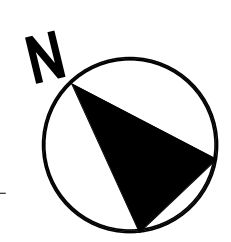
Checked By: G.R.

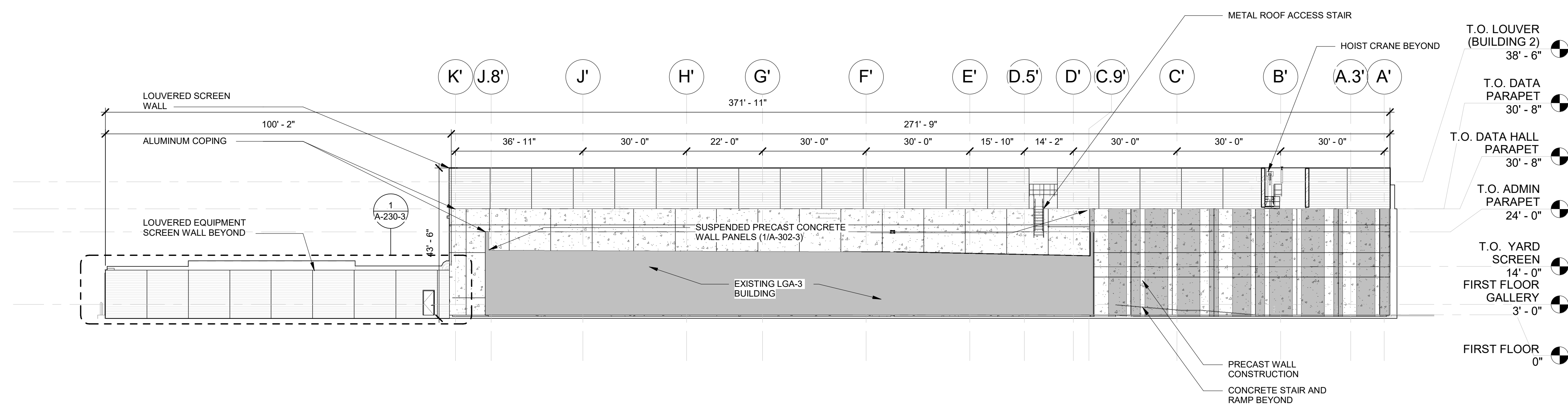


1 BUILDING 2 MASTERPLAN - FIRST FLOOR
 A-100-3 SCALE: 1" = 30'-0"

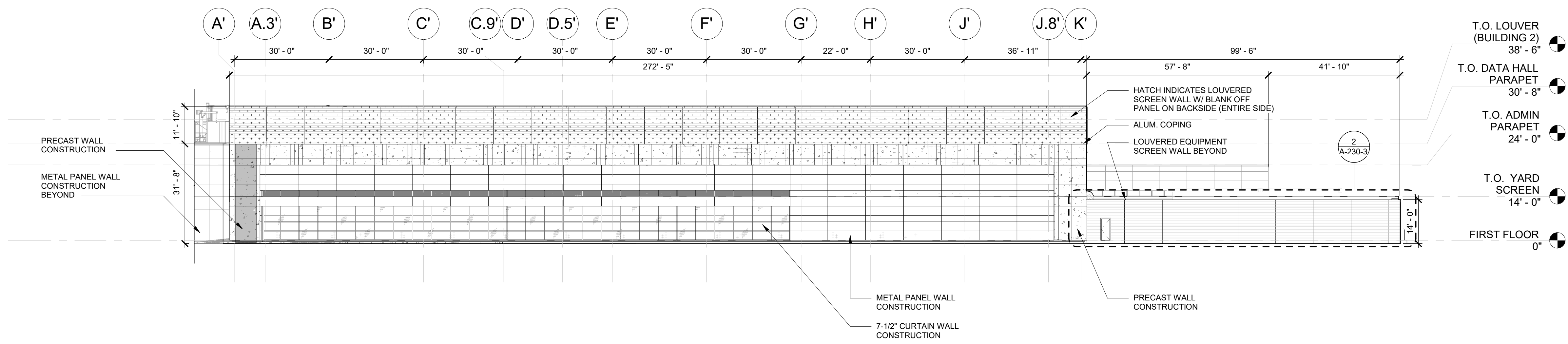


2 BUILDING 2 MASTERPLAN - ROOF
 A-100-3 SCALE: 1" = 30'-0"

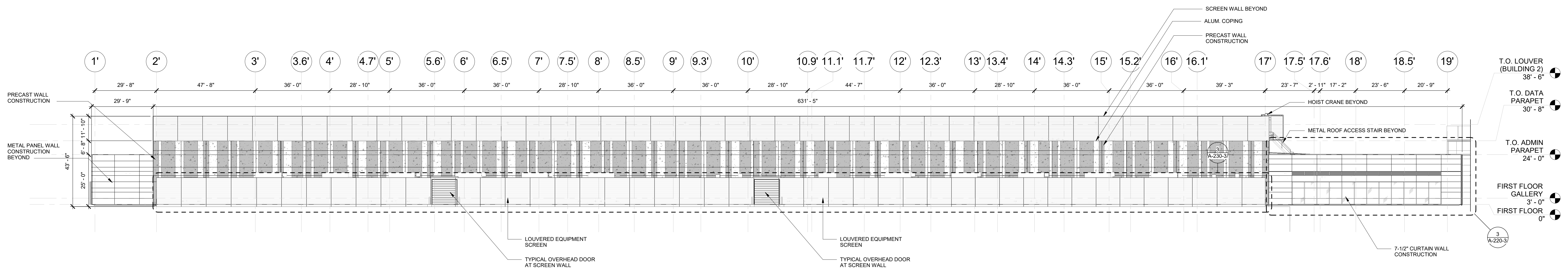




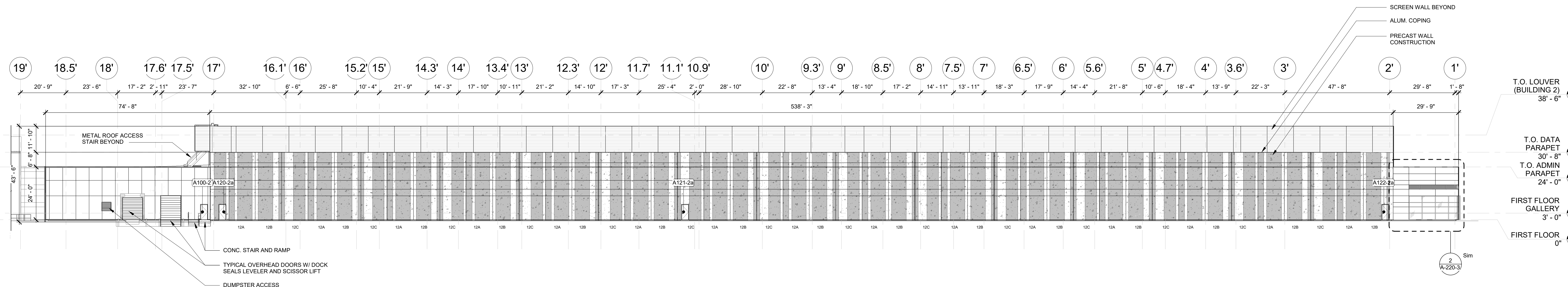
1 BUILDING 2 COMPOSITE NORTH
SCALE: 1" = 20'-0"



2 BUILDING 2 COMPOSITE SOUTH
SCALE: 1" = 20'-0"



3 BUILDING 2 COMPOSITE EAST
SCALE: 1" = 20'-0"



4 BUILDING 2 COMPOSITE WEST
SCALE: 1" = 20'-0"

Client:



Architect / MEP Engineers:



One East 33rd Street
New York, NY 10016
(212) 681-6500 (office)
www.highlandassociates.com

New York • Pennsylvania • Florida

Structural Engineer:



2 HANFORD ST.
FOXBOROUGH, MA
T. 508.354.0163

SUITE 104
02035
F. 212.481.4108

Precast Engineer:

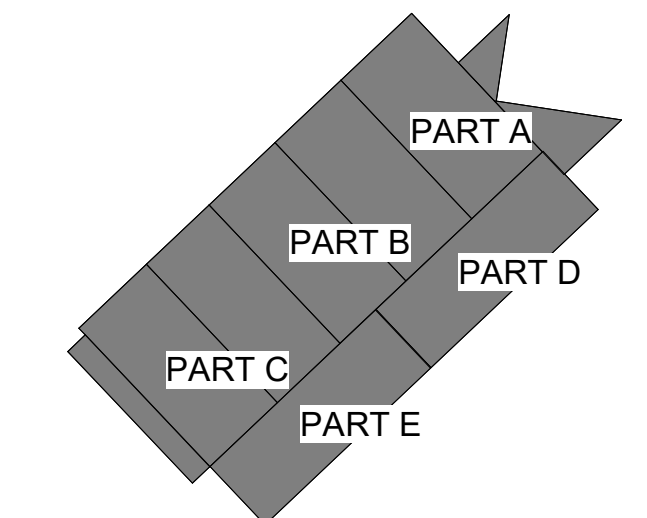
Security Consultant:

Site/Civil Consultant:



1 N Lexington Ave, Suite 1575
White Plains, NY 10601
ph: 914-368-9200
www.kimley-horn.com

Key Plan:



No.	Description	Date
1	ISSUED FOR SCHEMATIC DESIGN	5/24/24
2	ISSUED FOR 50% DESIGN DEVELOP.	7/01/24
3	ISSUED FOR 100% DESIGN DEVEL.	7/29/24
4	ISSUED FOR PRICING	8/16/24

Project:

DATABANK
LGA-4
2000 Corporate Dr.
Orangeburg, NY 10962
BUILDING # 02

Seal & Signature:

COMPOSITE OVERALL EXTERIOR BUILDING ELEVATIONS

Project Number: 2024-063P

Date: 08/16/2024

Drawn By: J.R.

Checked By: P.L.

Project Status

A-200-3