

RECEIVED

NOV 21 2024

TOWN OF ORANGETOWN
LAND USE BOARDS



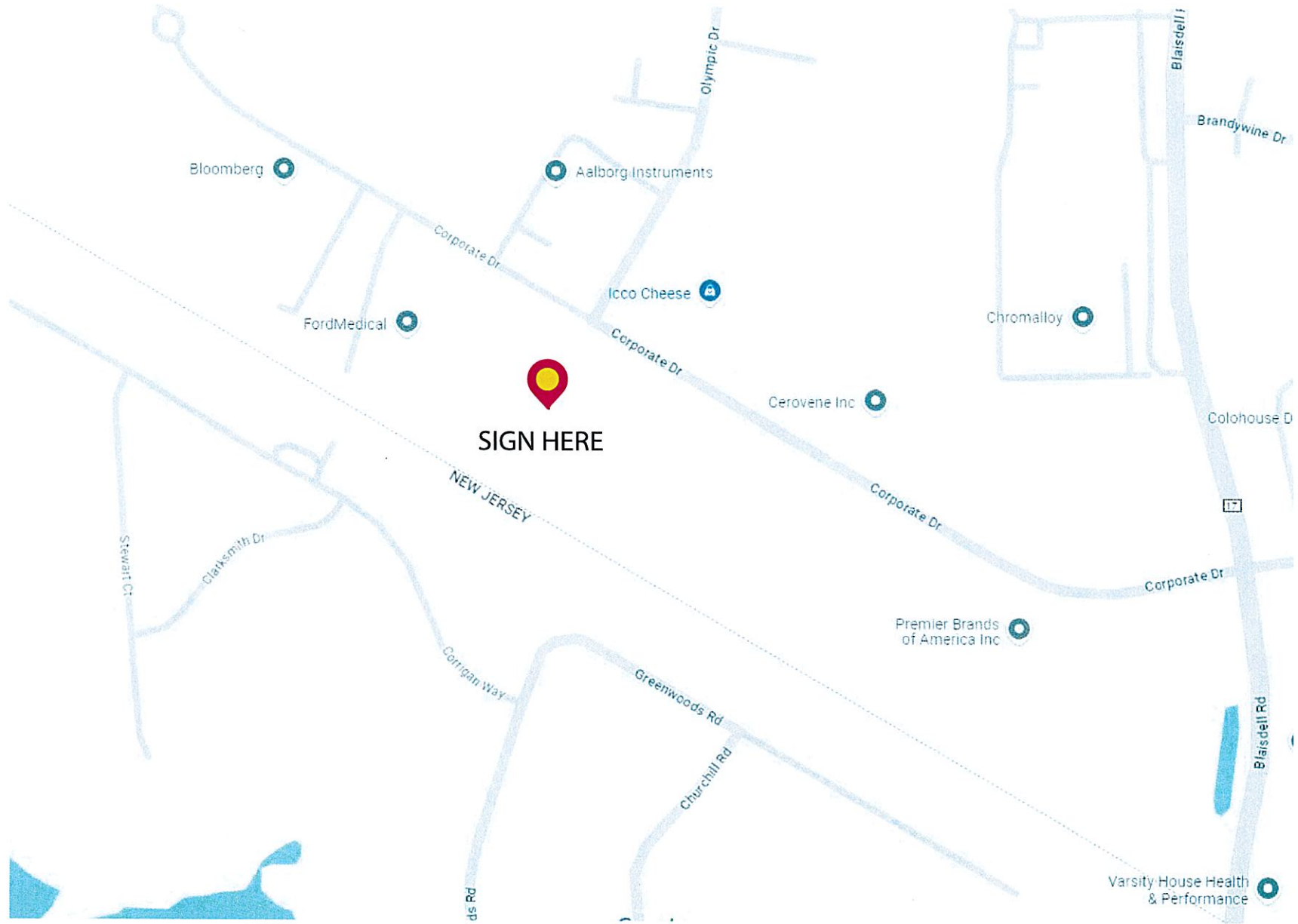
Town of Orangetown
MEETING OF:

JAN 9 2025

ARCHITECTURE & COMMUNITY
APPEARANCE BRD OF REVIEW

29 Corporate Dr, Orangeburg, NY 10962

LOCATION



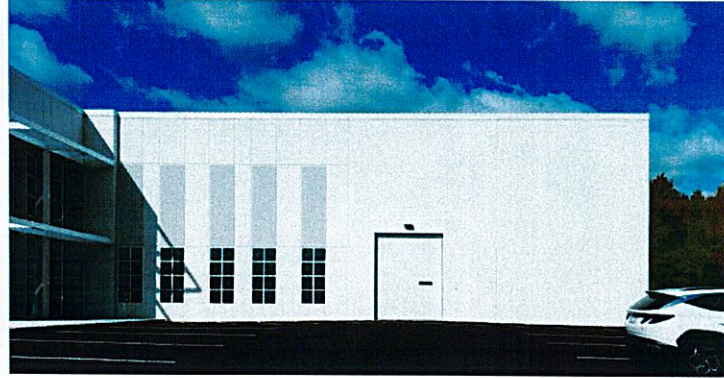
395 Broad Ave Unit 2, Ridgefield NJ 07657
Tel: 201.943.2775
WEB: WWW.APPLEEXHIBITS.COM | EMAIL: INFO@APPLEEXHIBITS.COM | TOLL FREE: 1.888.554.0600

OTOKI
29 Corporate Dr, Orangeburg, NY 10962

CUSTOMER : OTOKI
DATE : 10.21.24

© ALL RIGHTS RESERVED.
This drawing, and all graphic and written material contained herein, constitutes the original and may not be copied, distributed, or used in whole or in part, without expressed, written permission

EXISTING PREMISES

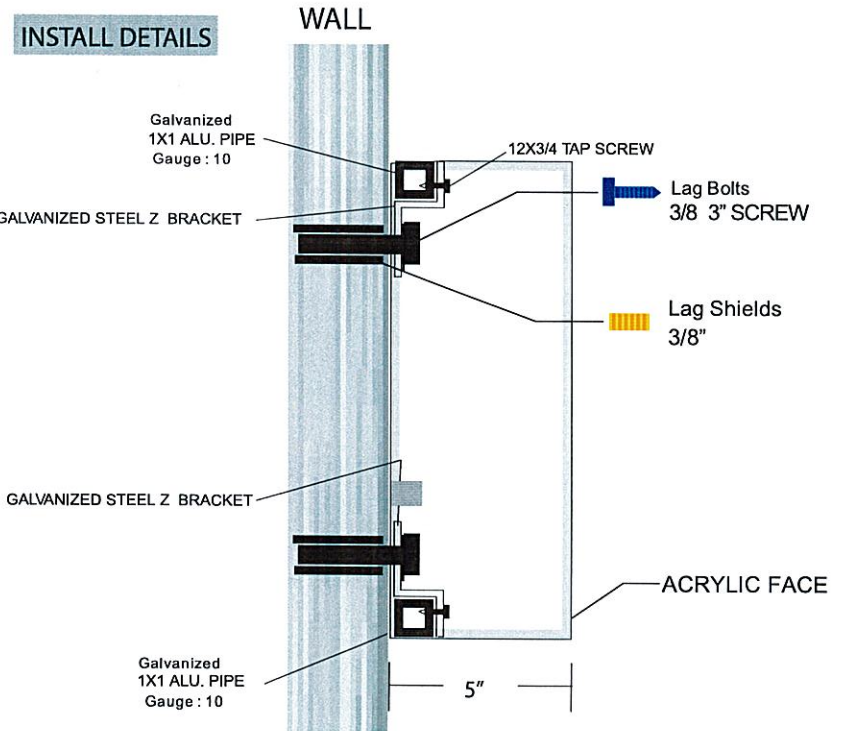
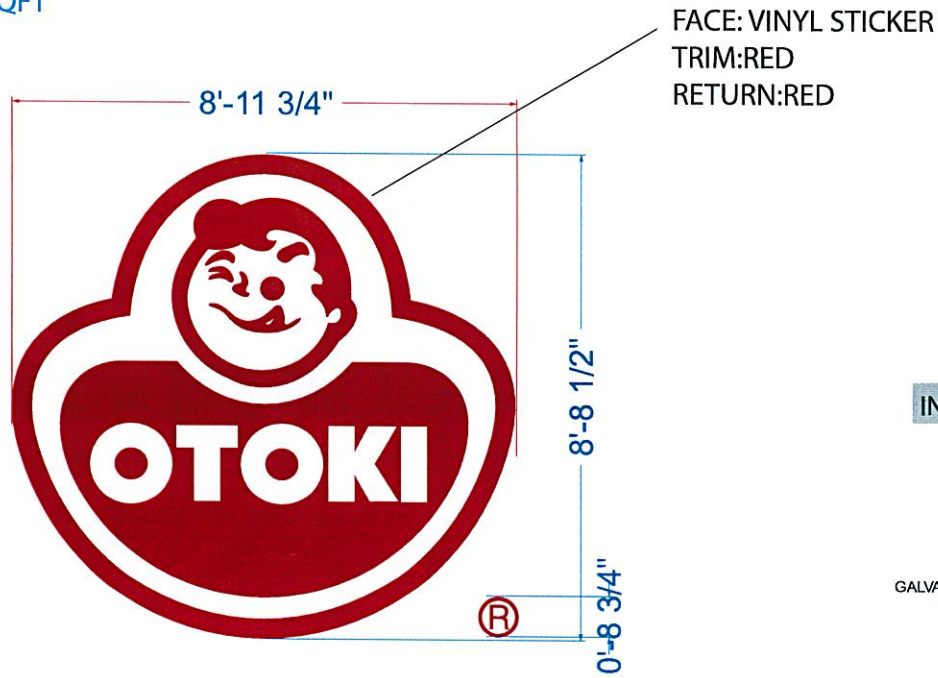


PROPOSED SIGNAGE

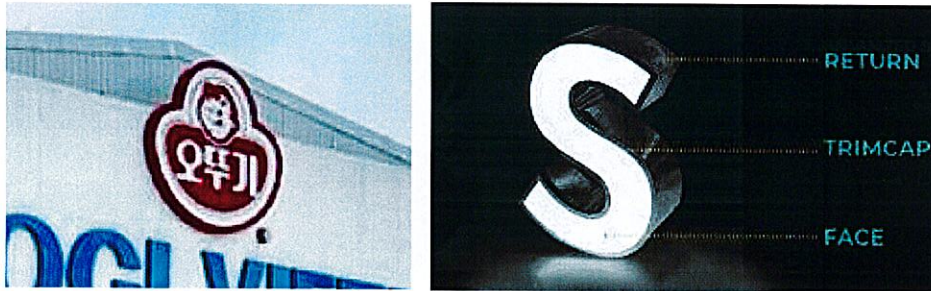


* CHANNEL LETTERS SIGN (NON-ILLUMINATED)

78.19 SQFT



SAMPLE PHOTO



* STAND SIGN(DOUBLE FACE) FACE CHANGE(NON-ILLUMINATED)
W/ VINYL CUT OUT LETTERS

32 SQFT



EXISTING PREMISES



PROPOSED SIGNAGE

