

1 SITE PLAN  
 SCALE: 1" = 60'-0"



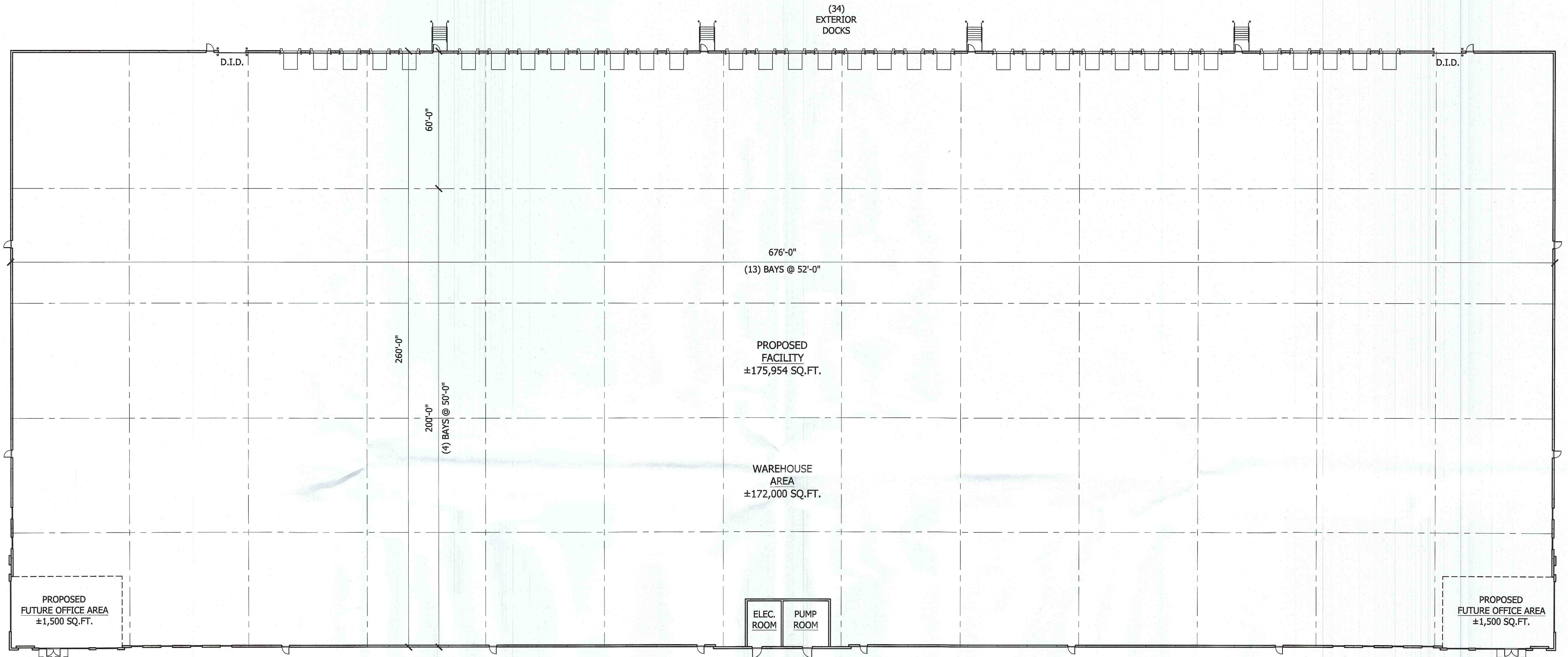


**DATA:**

SITE AREA:	±601,334 SQ.FT.
	±13.8 ACRES
BUILDING AREA (GROSS):	±175,954 SQ.FT.
EXTERIOR DOCKS:	34 DOCKS
DRIVE-IN-DOORS:	2 DOORS
TRAILER POSITIONS:	30 POSITIONS
CAR PARKING:	148 CARS
LAND BANKED CAR PARKING:	29 CARS
CLEAR HEIGHT:	36 FEET
F.A.R.:	.29

1 SITE PLAN  
SCALE: 1" = 50'-0"





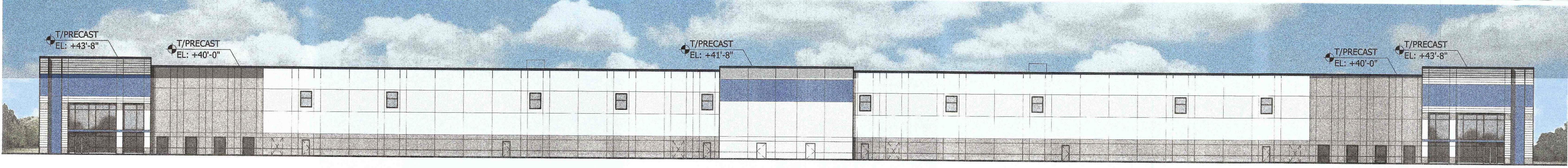
**DATA:**

BUILDING AREA (GROSS): ±175,954 SQ.FT.  
 EXTERIOR DOCKS: 34 DOCKS  
 DRIVE-IN-DOORS: 2 DOORS

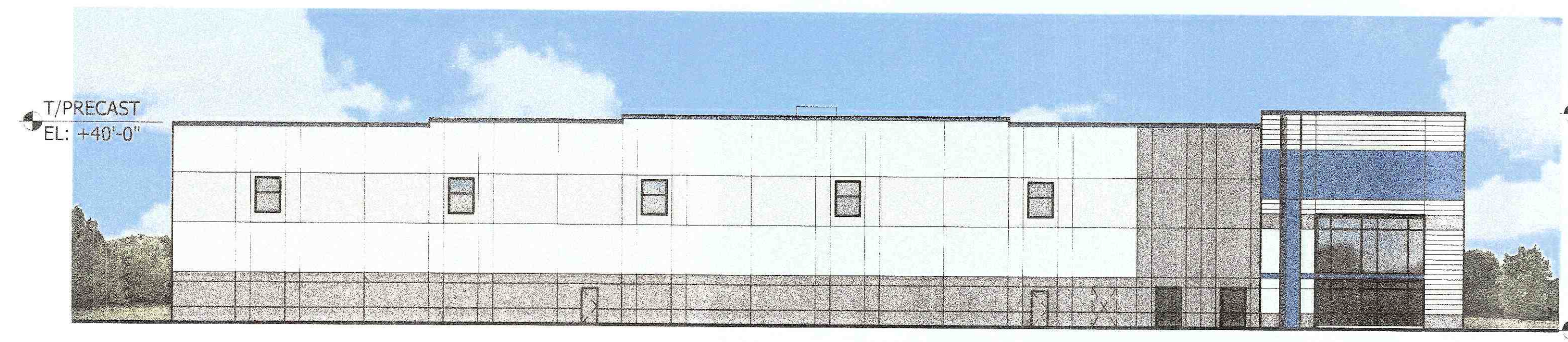
CLEAR HEIGHT: 36 FEET

**1 OVERALL FLOOR PLAN**  
 SCALE: 1" = 20'-0"

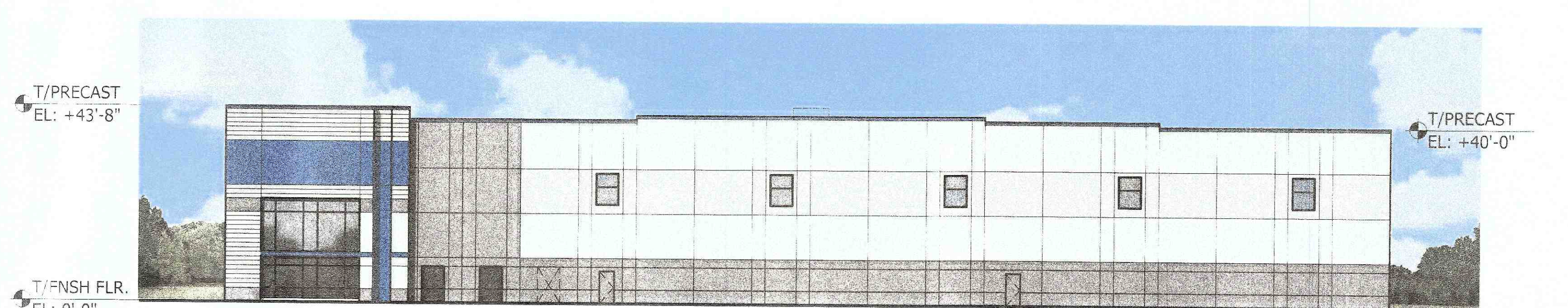




WEST



NORTH

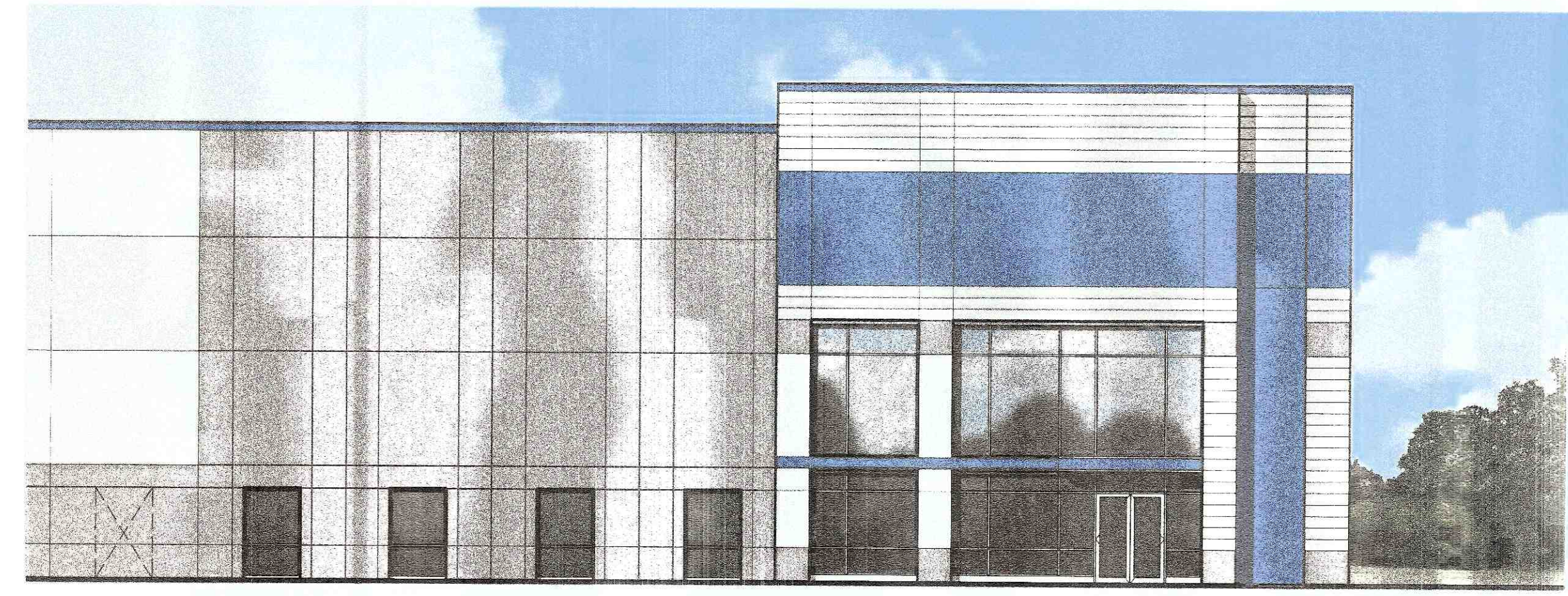


SOUTH



EAST

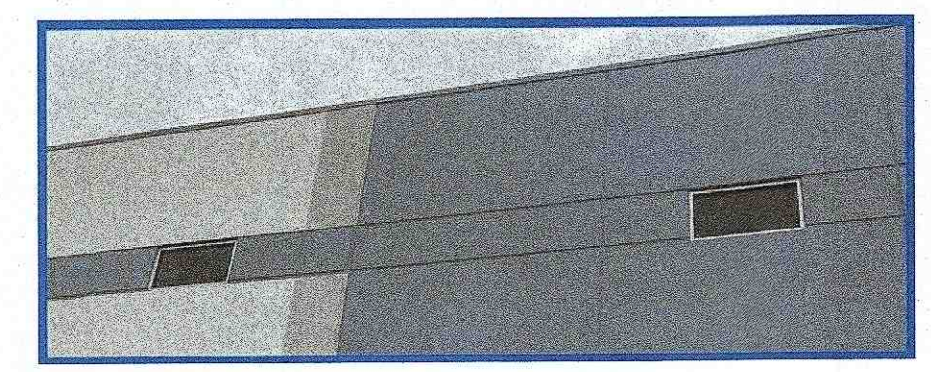
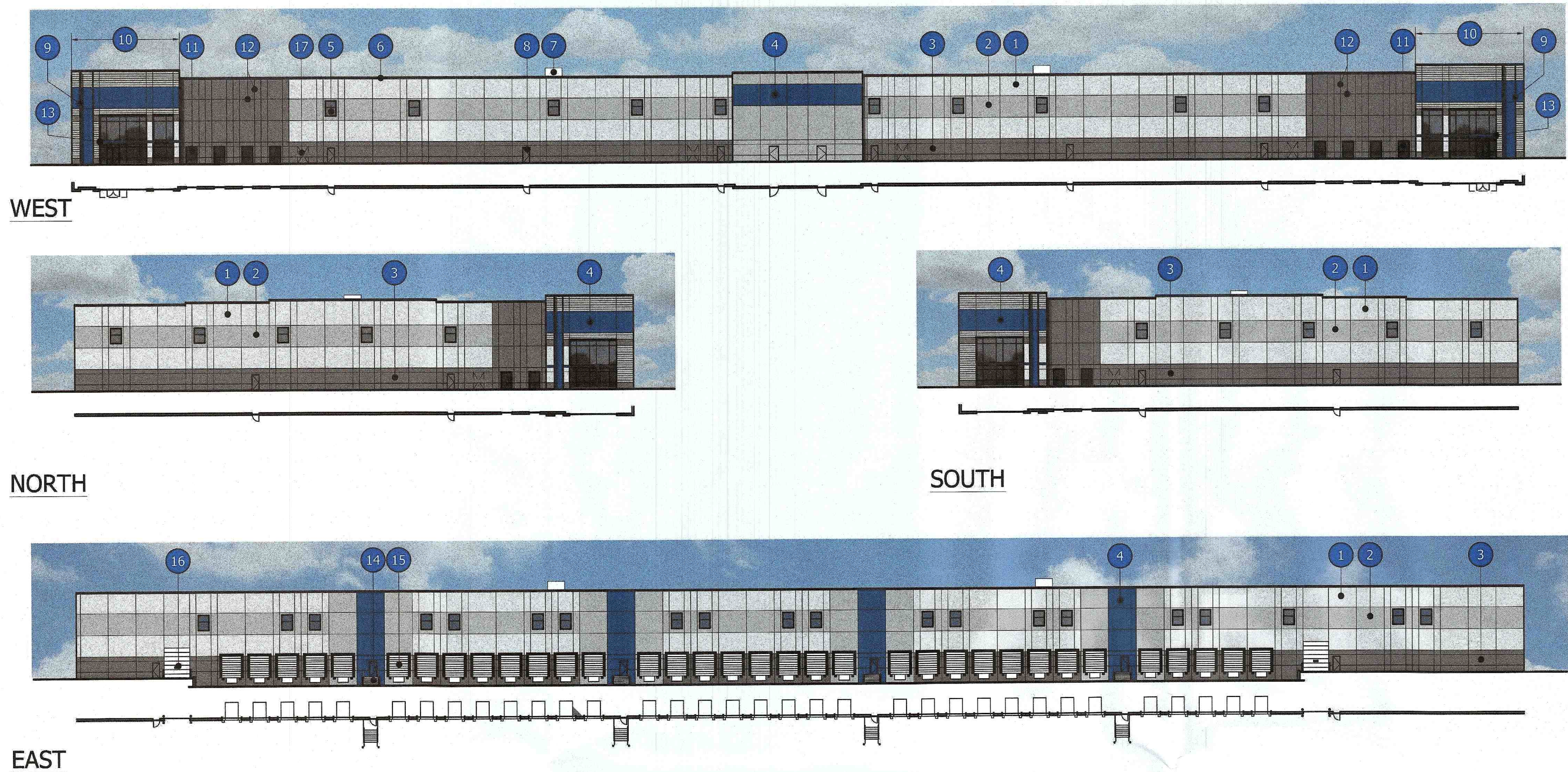
1 EXTERIOR ELEVATIONS  
SCALE: 1" = 20'-0"



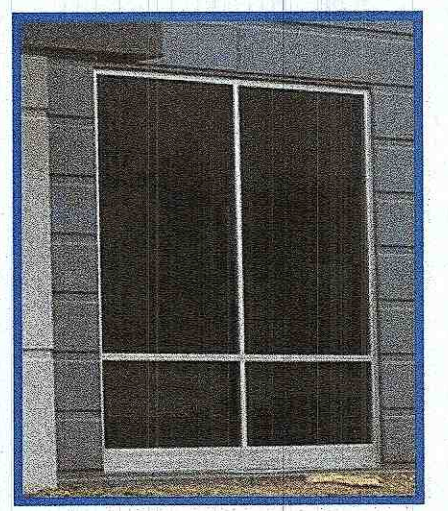
- ACCENT COLOR:  
COMMODORE SW6524
- DARK FIELD COLOR:  
SPECIAL GRAY SW6277
- MEDIUM FIELD COLOR:  
ZIRCON SW7667
- LIGHT FIELD COLOR:  
EXTRA WHITE SW7006

2 ENLARGED TYP. ENTRANCE  
SCALE: 3/32" = 1'-0"

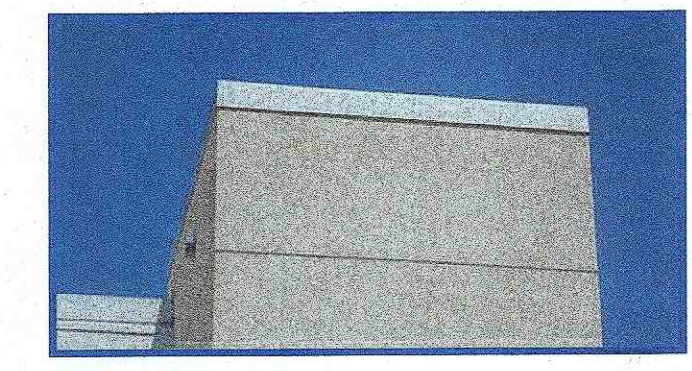




5 CLERESTORY WINDOW



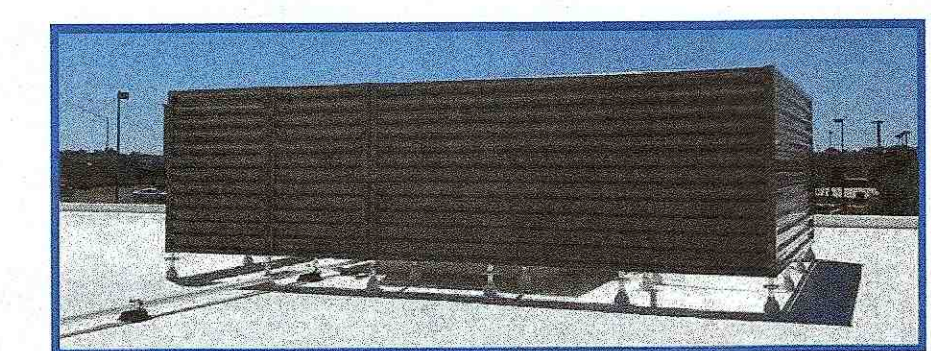
11 PUNCHED WINDOW



6 PAC-CLAD PRE-FINISHED METAL COPING (PAINTED TO MATCH ACCENT COLOR)



12 PRECAST REVEALS (HORIZONTAL & VERTICAL)



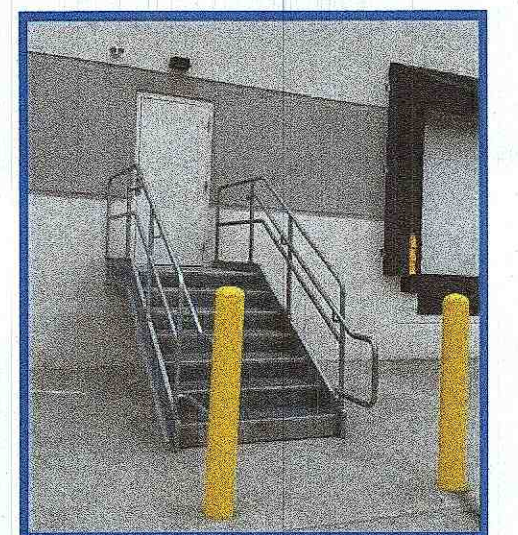
7 RTU SCREEN



13 PRE-FINISHED METAL SUNSHADE



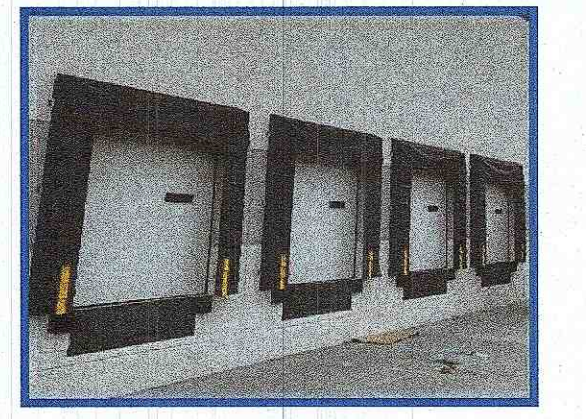
8 HOLLOW METAL DOOR & FRAME, PAINTED



14 GALVANIZED METAL STAIR WITH GUARDRAIL & HANDRAIL



9 LAPPED PRECAST PANELS



15 SECTIONAL OVERHEAD DOCK DOORS



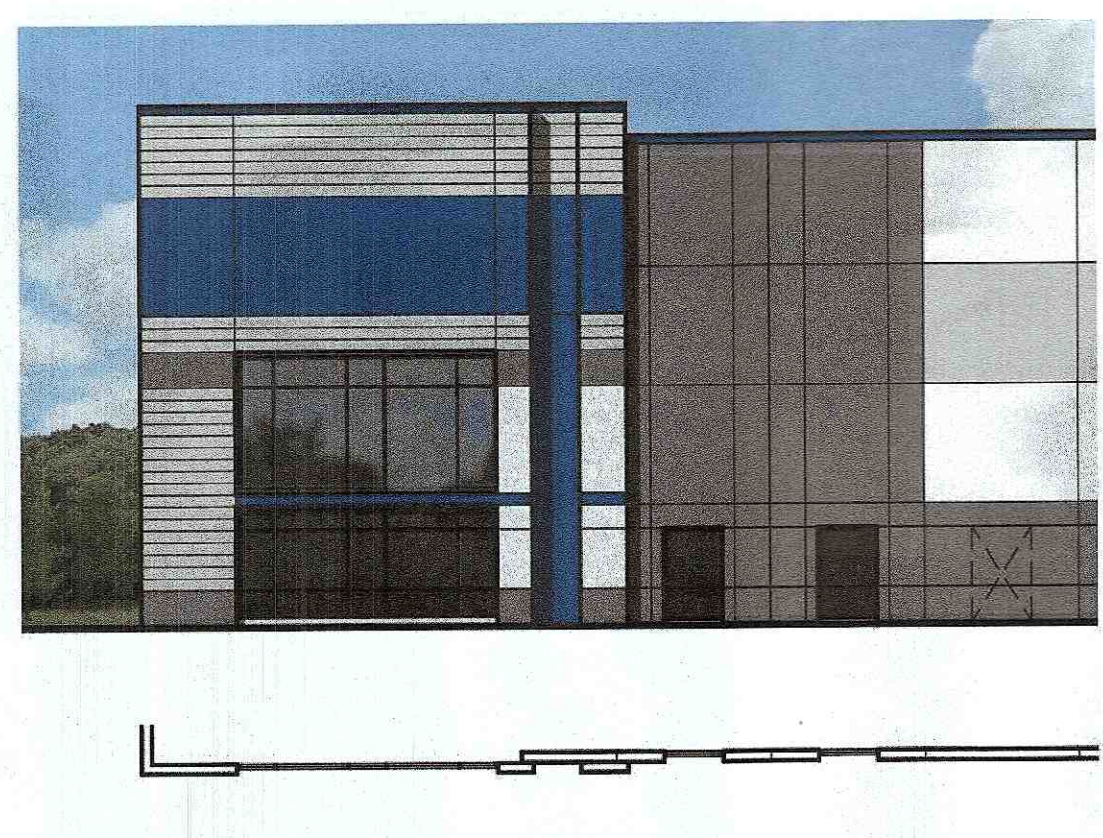
10 ALUMINUM STOREFRONT SYSTEM



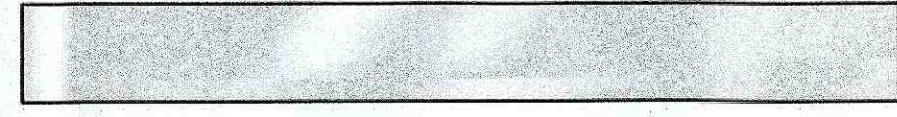
16 DRIVE-IN DOOR

17 FUTURE KNOCK-OUT PANEL

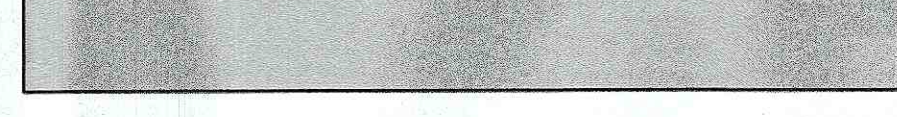
1 EXTERIOR ELEVATIONS  
SCALE: 1/32" = 1'-0"



1 LIGHT FIELD COLOR: EXTRA WHITE SHERWIN WILLIAMS SW7006 (INSULATED PRECAST CONCRETE)



2 MEDIUM FIELD COLOR: ZIRCON SHERWIN WILLIAMS SW7667 (INSULATED PRECAST CONCRETE)



3 DARK FIELD COLOR: SPECIAL GRAY SHERWIN WILLIAMS SW6277 (INSULATED PRECAST CONCRETE)



4 ACCENT FIELD COLOR: COMMODORE SHERWIN WILLIAMS SW6524 (INSULATED PRECAST CONCRETE)



2 ENLARGED TYP. ENTRANCE  
SCALE: 1/16" = 1'-0"

