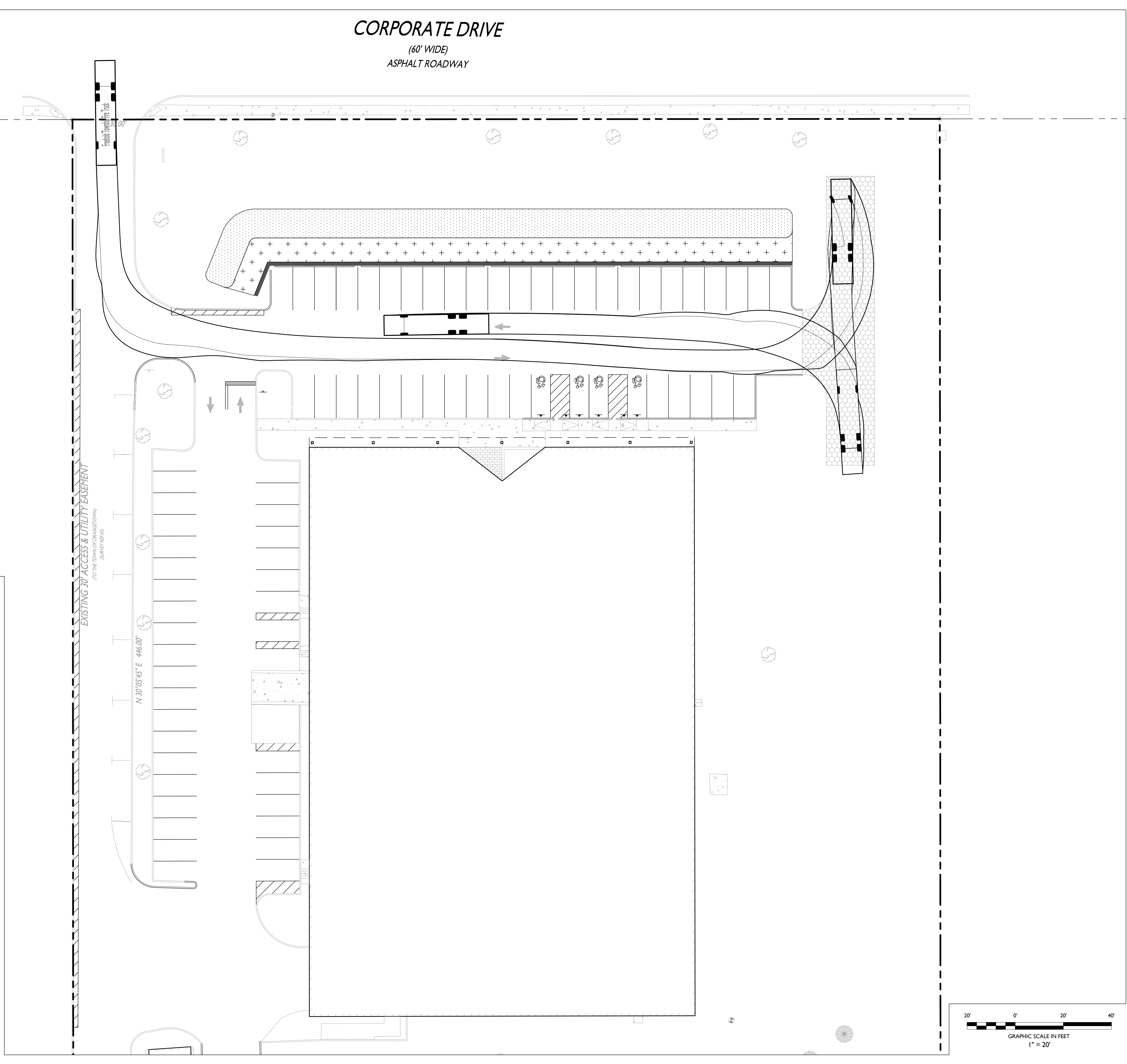
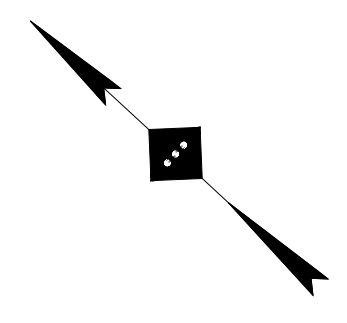


24/001202/2021/02/08/18 GREGORY KAUF, ARCHITECT - 35 CORPORATE DRIVE, ORANGETOWN, NY 10914 (P) TRUCK TURN EXHIBIT DWG

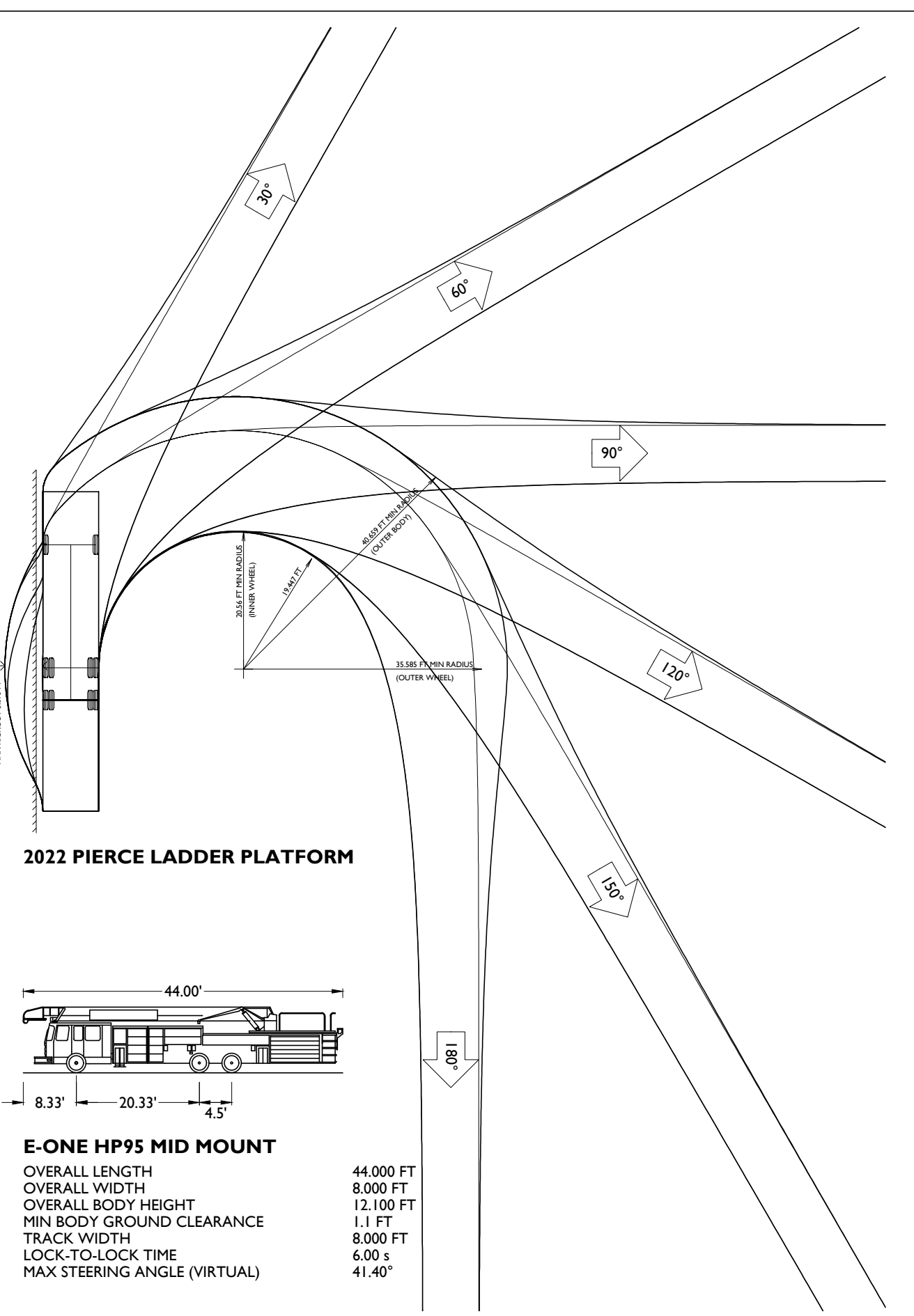
CORPORATE DRIVE

(60' WIDE)
ASPHALT ROADWAY

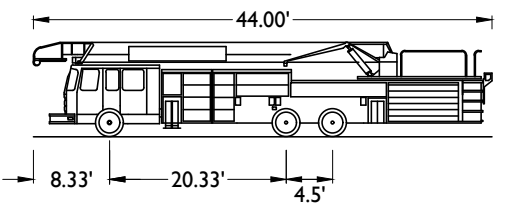


EXISTING 30' ACCESS & UTILITY EASEMENT
(TO THE PROPERTY OF ORANGETOWN
TOWN)

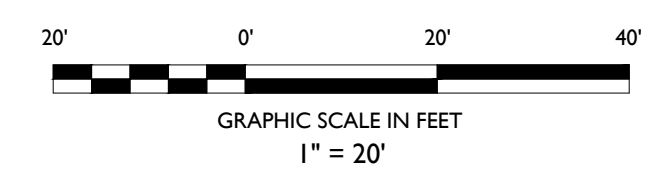
N 30°05'45" E - 446.00'



2022 PIERCE LADDER PLATFORM



E-ONE HP95 MID MOUNT
OVERALL LENGTH 44.00 FT
OVERALL WIDTH 8.33 FT
OVERALL BODY HEIGHT 20.33 FT
MIN BODY GROUND CLEARANCE 1.1 FT
TRACK WIDTH 8.00 FT
LOCK-TO-LOCK TIME 6.00 s
MAX STEERING ANGLE (VIRTUAL) 41.40°



TRUCK TURN EXHIBIT

MATIV HOLDINGS INC. PROPOSED PARKING LOT IMPROVEMENTS

SECTION 73.19, BLOCK 1, LOT 6
25 CORPORATE DRIVE
HAMLET OF ORANGETOWN,
ROCKLAND COUNTY, NEW YORK



STONEFIELD
engineering & design

SCALE: 1"=20' PROJECT ID: NYC-230218

TITLE:
**FIRETRUCK
TURNING EXHIBIT**

DRAWING:

I OF I



Rutherford, NJ · New York, NY · Boston, MA
Princeton, NJ · Tampa, FL · Detroit, MI
www.stonefielddesign.com

584 Broadway, Suite 310, New York, NY 10012
Phone 718.606.8305

NOT APPROVED FOR CONSTRUCTION

ISSUE	DATE	BY	DESCRIPTION
I	04/09/2025	JF	ISSUED FOR REVIEW