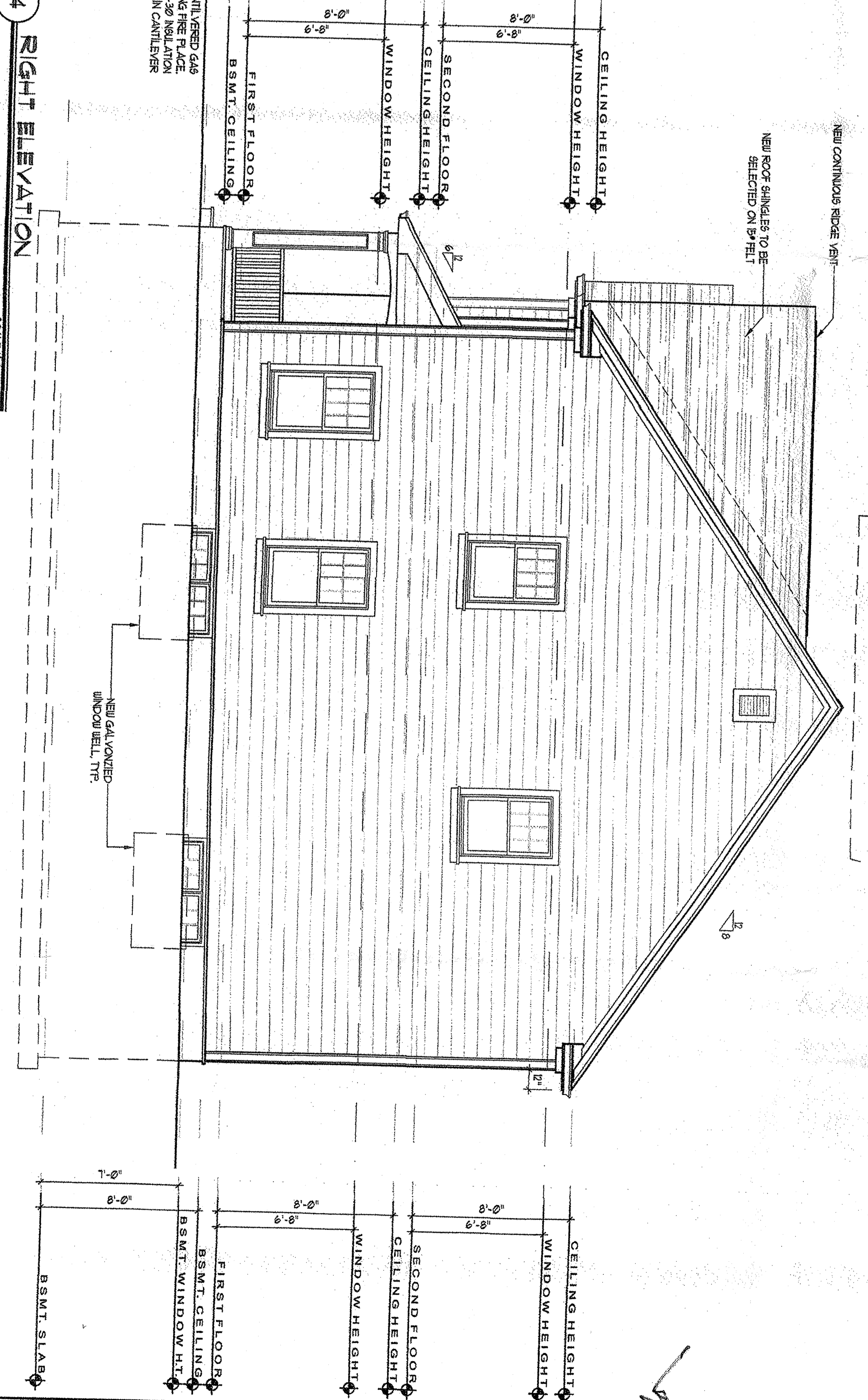
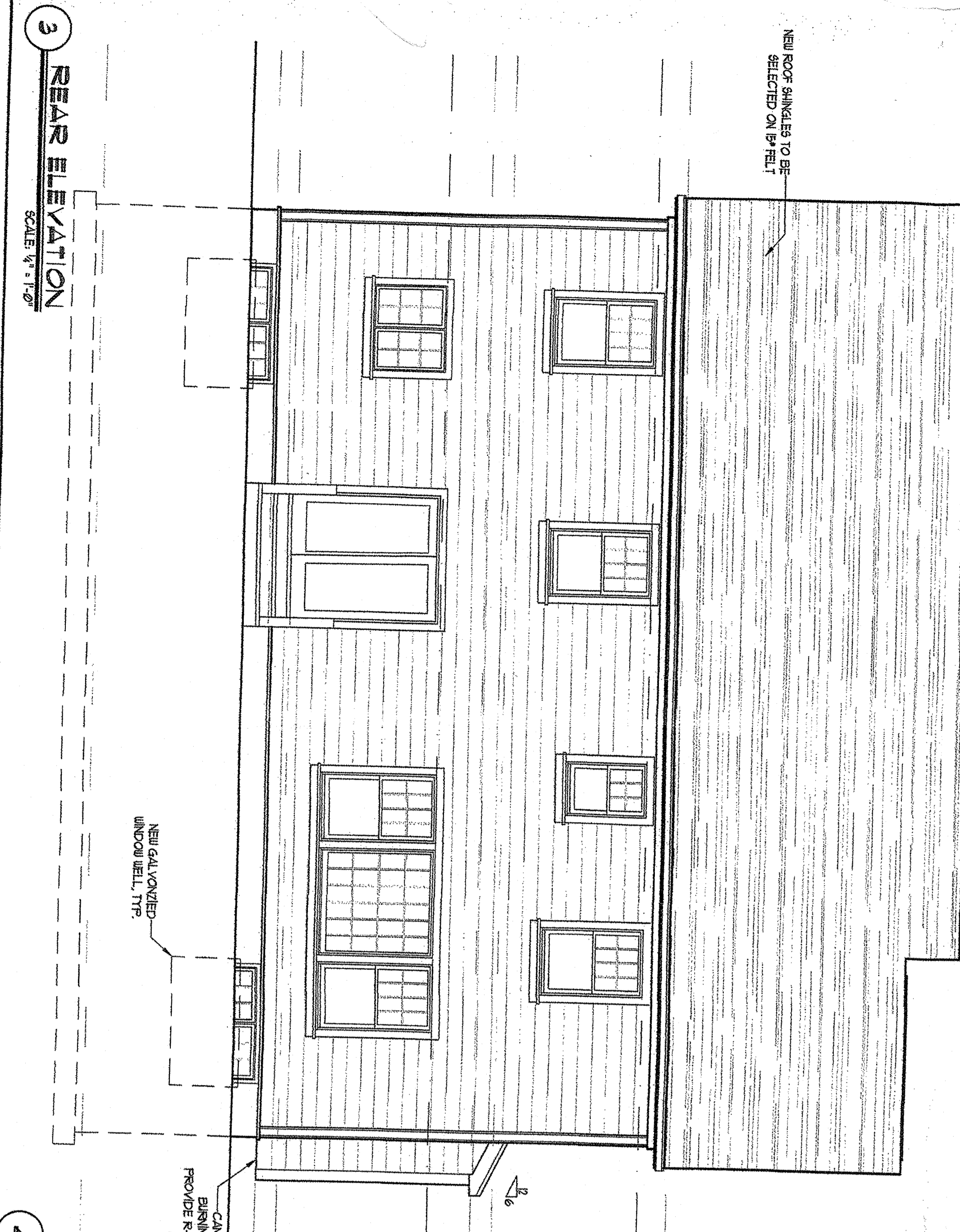




date	issue	description	by
2/3/20		ISSUED FOR PERMIT	RH

ELEVATIONS
ALATSAS/ DWA
NEW RESIDENCE
23 MERCURY DRIVE, SECTION 6814-2-49.2
PEARL RIVER, NEW YORK



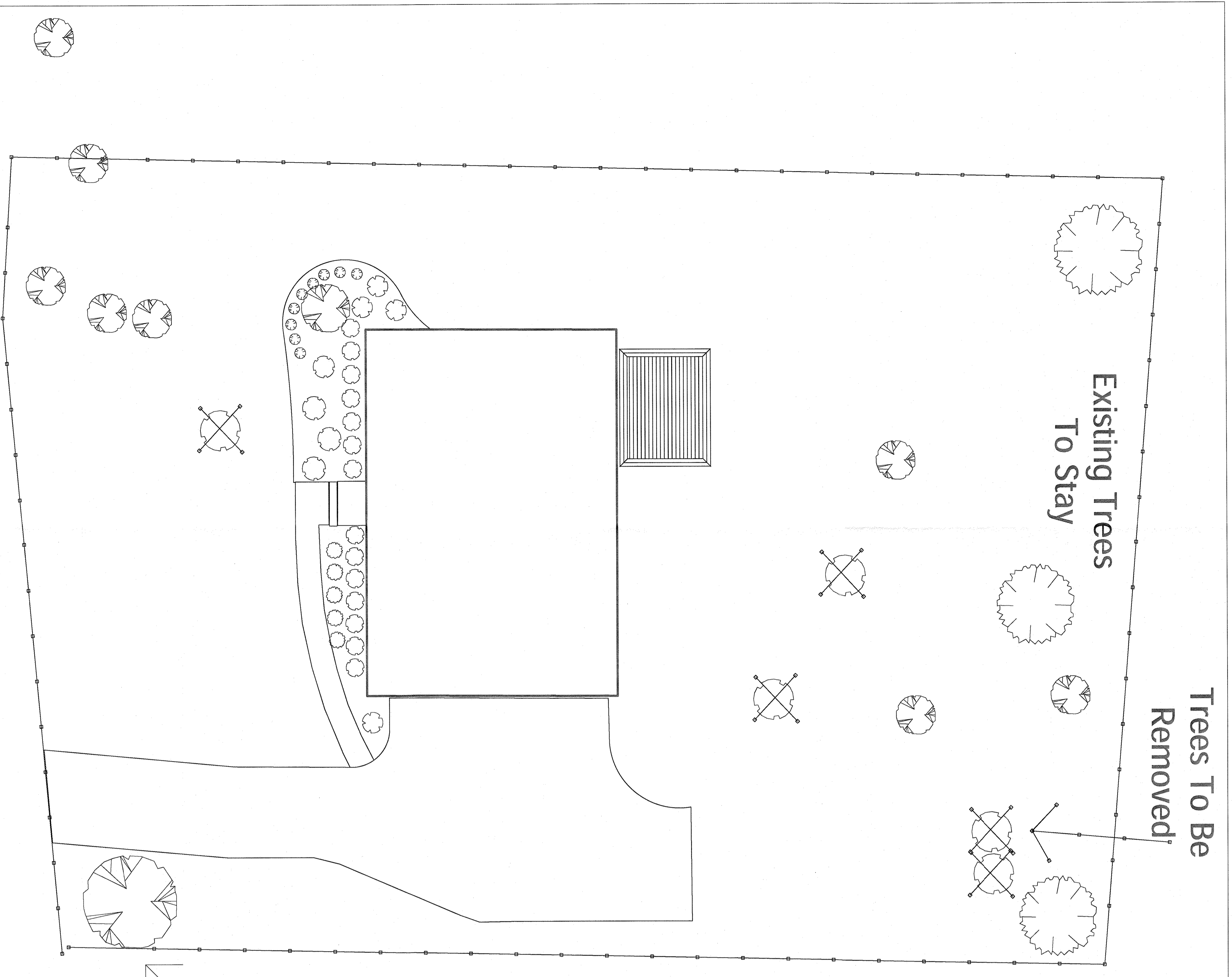
ROBERT HOENE ARCHITECT
BRADENTON, FL.

ARCHITECT

NEW YORK STATE ARCHITECTS ASSOCIATION

DRAWN: RH
CHECKED: ROBERT HOENE
DATE: 2/3/2020
SCALE: AS NOTED

JOB# 1
A1.0
www.hoenearchitects.com



Trees To Be Removed

Existing Trees To Stay

Proposed Shade Tree

Shrubs \ Accents			
10	English Lavender	Lamendula Angustifolia	1 Gal
Shrubs \ Deciduous			
1	Carpentaria Acoma	Lagostroemia Indica 'Kona'	2' Gal
6	Japanese Spirea, Spring	Spirea japonica 'Cadmound'	3 Gal
2	Red Twig Dogwood	Cornus alba 'Ivory Halo'	3 Gal
Shrubs \ Evergreen			
28	Common Boxwood, Mature	Buxus sempervirens	18"-24"
Trees \ Deciduous			
1	Red Maple, Autumn	Acer rubrum Autumn	3' Cal
1	Weeping Japanese Cherry	Prunus Snow Fountain'	Full Size
Trees \ Evergreen			
11	Trees To Stay	Trees To Stay	Full Size
5	Trees To Remove	Trees To Remove	Full Size

Scale: 1/8" = 1'

Proposed Site Plan For 23 Mercury Drive, Pearl River NY 10965

Altsas- DWA LLC

Designed By: Edge Landscape Inc

