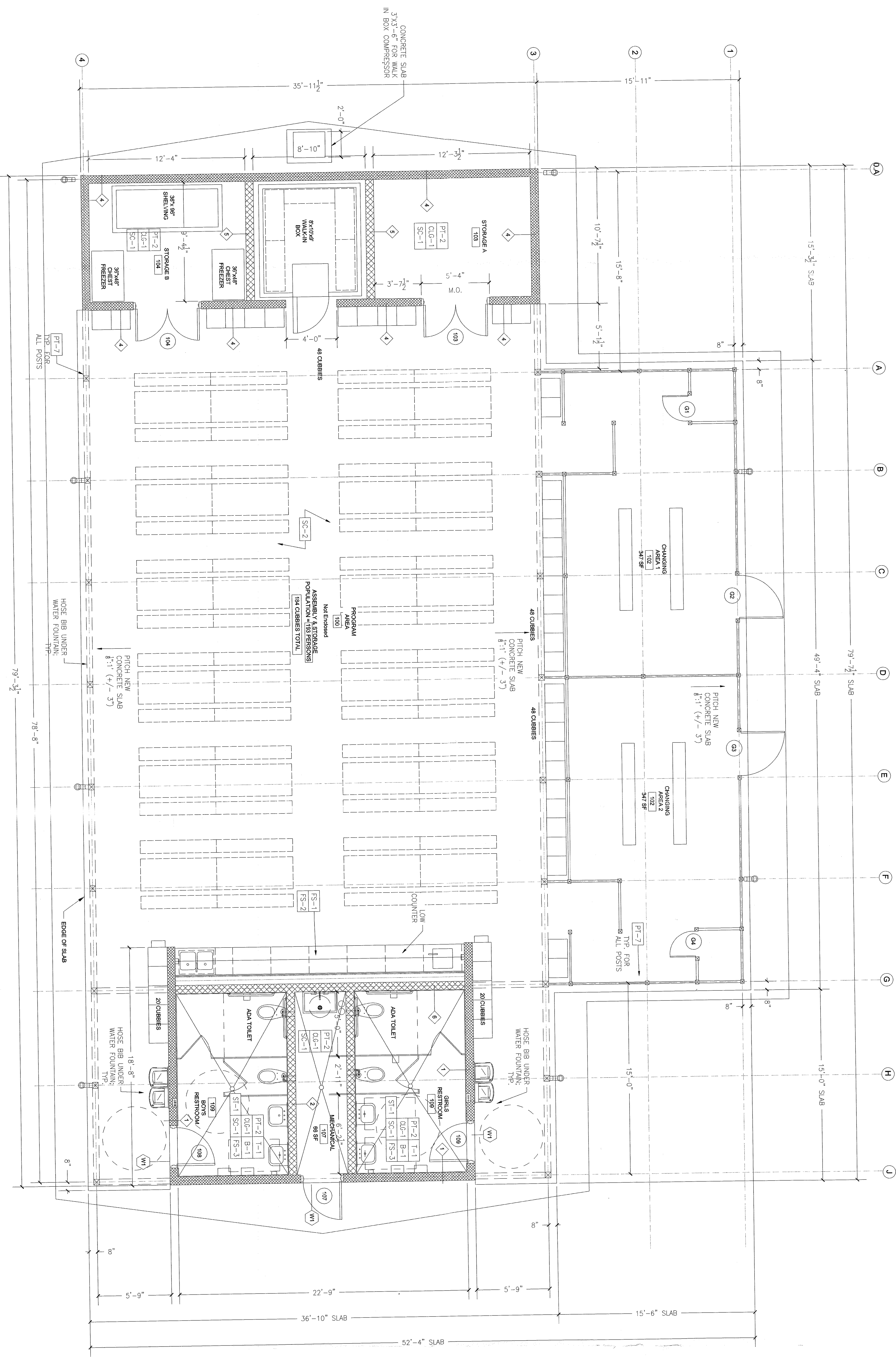


- SHEET SPECIFIC NOTES**
- THE FOLLOWING NOTES APPLY TO THIS SHEET ONLY:
1. ASPHALT SINGLE-SLOPE UNDERLAYMENT. SEE SPECS.
  2. 3/8" x 1" TPO'S. PAINT. OUTSIDE.
  3. 1/2" REINFORCED ALUM. DOWNPOUT.
  4. 1/2" REINFORCED ALUM. DOWNPOUT.
  5. OPERABLE & NON-OPERABLE WINDOW.
  6. OPERABLE & NON-OPERABLE WINDOW.
  7. OPERABLE & NON-OPERABLE WINDOW.
  8. OPERABLE & NON-OPERABLE WINDOW.
  9. OPERABLE & NON-OPERABLE WINDOW.
  10. OPERABLE & NON-OPERABLE WINDOW.
  11. 5/8" REINFORCED TRAIL. 1/2" x 1/2" x 1/2" (SS-2).
  12. 5/8" REINFORCED TRAIL. 1/2" x 1/2" x 1/2" (SS-2).
  13. 5/8" REINFORCED TRAIL. 1/2" x 1/2" x 1/2" (SS-1).
  14. 5/8" REINFORCED TRAIL. 1/2" x 1/2" x 1/2" (SS-1).
  15. 5/8" REINFORCED TRAIL. 1/2" x 1/2" x 1/2" (SS-1).
  16. 5/8" REINFORCED TRAIL. 1/2" x 1/2" x 1/2" (SS-1).
  17. 5/8" REINFORCED TRAIL. 1/2" x 1/2" x 1/2" (SS-1).
  18. 5/8" REINFORCED TRAIL. 1/2" x 1/2" x 1/2" (SS-1).
  19. 5/8" REINFORCED TRAIL. 1/2" x 1/2" x 1/2" (SS-1).
  20. 5/8" REINFORCED TRAIL. 1/2" x 1/2" x 1/2" (SS-1).
  21. 5/8" REINFORCED TRAIL. 1/2" x 1/2" x 1/2" (SS-1).

**2 EAST EXTERIOR ELEVATION**  
1/4" = 1'-0"



**1 HOMEBASE CK-1 CONSTRUCTION PLAN**  
1/4" = 1'-0"

**UJA Federation**  
NEW YORK

**HENRY KAUFMANN**  
CAMPGROUNDS

**DAY CAMP PROPOSED**  
IMPROVEMENTS

667 BLAUVELT ROAD, PEARL RIVER  
(44 HENRY KAUFMANN, PEARL RIVER, NY)  
ORANGETOWN, ORANGETOWN, NY)

**ZUBATKIN**  
Owner Representation, LLC  
333 W. 52 ST. 5TH FL., NY, NY 10019

**ZASKORSKI & ASSOCIATES**  
ARCHITECTS, A.I.A., PC  
247 West 35th Street, 16th Fl.  
New York, NY 10001  
212-239-7212 www.zaskorski.com

**DINVEY • TUNG • SCHWABE**  
Intelligent Land Use  
Director: Tung Schwabe, LLP  
One Kinn Blvd  
White Plains, NY 10601  
P: 914.428.0010  
F: 914.428.0017

**O.L.A. Consulting Engineers**  
50 Broadway  
Hawthorne  
New York  
10532  
914.747.2800  
olac.com

**RSE ASSOCIATES**  
18 SECOND AVENUE  
PORT WASHINGTON, NY 11050  
212.776.4255 x402  
liam.chen@rseassociates.com  
www.rseassociates.com

No.	ISSUE OR REVISION	DATE
1	PLANNING BOARD SUBMISSION	03.13.2020

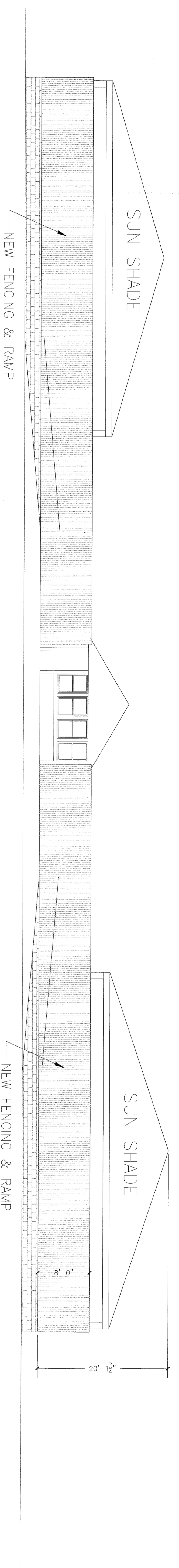
UJA Federation is a registered trademark of UJA Federation. All rights reserved. The content of this document is the property of UJA Federation and is confidential. No part of this document may be reproduced without the prior written consent of UJA Federation. © 2020 UJA Federation. All rights reserved.

**UJA FEDERATION NY**  
PEARL RIVER - 92Y / TWELVE TRAILS  
DAY CAMP PROPOSED IMPROVEMENTS  
667 BLAUVELT ROAD, PEARL RIVER  
(44 HENRY KAUFMANN, PEARL RIVER,  
ORANGETOWN, NY)

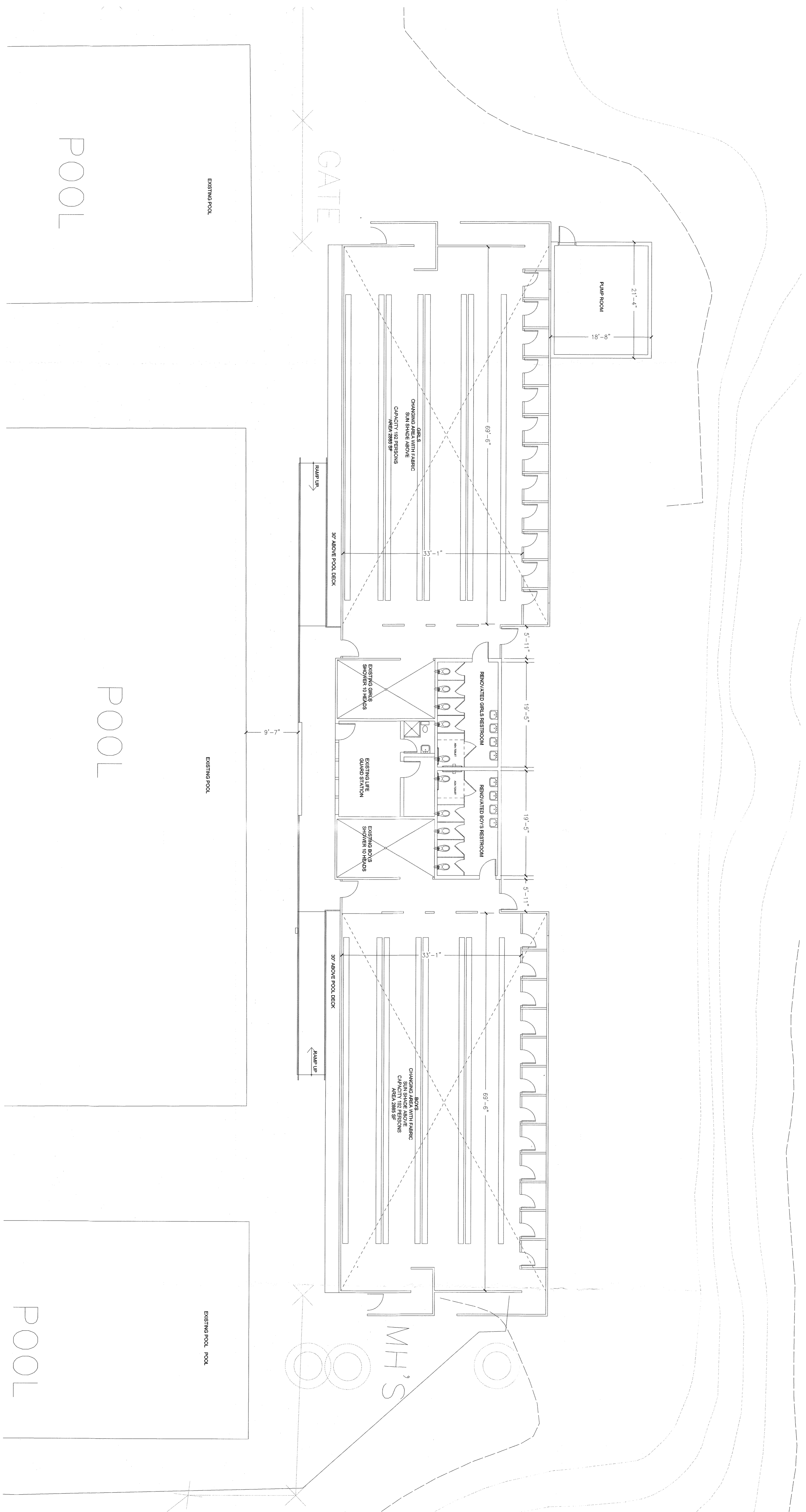
**HOME BASE PLAN & ELEVATION**

SCALE: PROJECT NO. 16-166  
DRAWING NO. 16-166  
CHECKED BY: DATE: 1-A-1

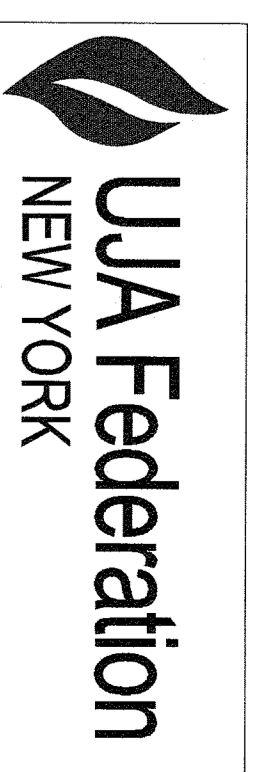




**2** ELEVATION  
1/8" = 1'-0"



**1** FLOOR PLAN  
1/8" = 1'-0"

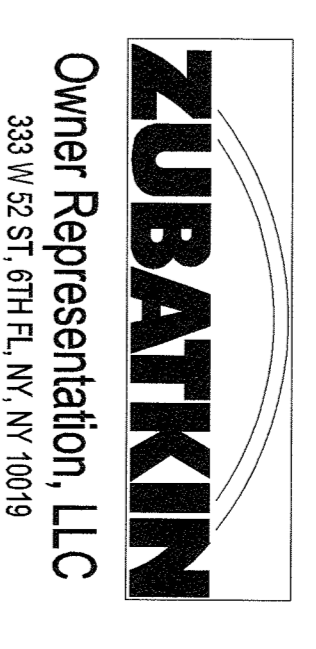


HENRY KAUFMANN  
CAMPGROUNDS

DAY CAMP PROPOSED  
IMPROVEMENTS

667 BLAUVELT ROAD, PEARL RIVER  
644 HENRY KAUFMANN RD.  
ORANGEBURG, ORANGEBURG, NY

OWNER'S REP



ARCHITECT

ZASKORSKI & ASSOCIATES  
ARCHITECTS, A.I.A., PC  
247 West 35th Street, 16th fl.  
New York, NY 10001

212-239-7212 www.zaskorski.com

PLANNER, CIVIL ENGINEER, LANDSCAPE ARCHITECT

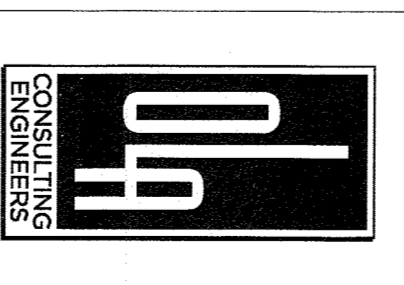
DIVNEY • TUNG • SCHWALBE  
Intelligent Land Use

Divney Tung Schwalbe, LLP  
One North Broadway  
White Plains, NY 10601

P-314.428.0010  
F-314.428.0017

MEP ENGINEER

O.L.A. Consulting Engineers  
50 Broadway  
Hawthorne  
New York  
10522



914.747.2800  
olace.com

STRUCTURAL ENGINEER

RSE ASSOCIATES  
18 SECOND AVENUE  
PORT WASHINGTON, NY 11060

212.776.4255 x402  
lham.ohanlon@rseassociates.com  
www.rseassociates.com

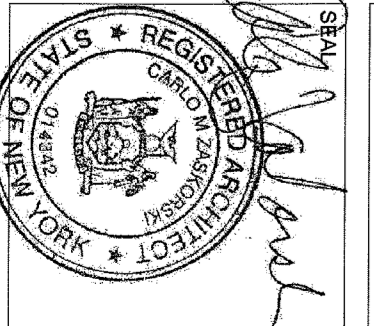
NO.	ISSUE OR REVISION	DATE
1	PLANNING BOARD SUBMISSION	03.13.2020

No use, reproduction or dissemination may be made of this drawing and the contents set forth herein without the prior written consent of © Zaskorski & Associates, A.I.A., PC. Copyright 2020

PROJECT TITLE  
UJA FEDERATION NY  
PEARL RIVER - 92Y / TWELVE TRAILS  
DAY CAMP PROPOSED IMPROVEMENTS  
667 BLAUVELT ROAD, PEARL RIVER  
644 HENRY KAUFMANN RD, ORANGEBURG,  
ORANGEBURG, NY

AGENCY  
DRAWING TITLE  
CENTRAL AQUATIC CENTER

SCALE	PROJECT NO.
AS SHOWN	18-16
CHECKED BY	DRAWING NO.
DATE	A-2



**UJA Federation**  
NEW YORK

**HENRY KAUFMANN**  
**CAMPGROUNDS**

**DAY CAMP PROPOSED**  
**IMPROVEMENTS**

667 Rt. ALVET ROAD, PEARL RIVER  
64 HENRY KAUFMANN RD  
ORANGETOWN, ORANGETOWN, NY)

**ZUBATKIN**  
Owner Representation, LLC  
333 W 52 ST 8TH FL, NY, NY 10019

**ZASKORSKI & ASSOCIATES**  
ARCHITECTS, A.I.A., PC  
247 West 35th Street, 16th Fl,  
New York, NY 10001  
212-239-7212 www.zaskorski.com

**DIVNEY • TUNG • SCHWALBE**  
Intelligent Land Use  
Divney Tung Schwalbe, LLP  
One North Broadway  
White Plains, NY 10601  
P: 914.428.0010  
F: 914.428.0071

**O.L.A. Consulting Engineers**  
50 Broadway  
Hawthorne  
New York  
10532  
914.747.2800  
oladea.com

**RSE ASSOCIATES**  
18 SECOND AVENUE  
PORT WASHINGTON, NY 11050  
212.776.4255 x402  
liam.ohanon@rseassociates.com  
www.rseassociates.com

STRUCTURAL ENGINEER

No.	ISSUE OR REVISION	DATE
1	PLANNING BOARD SUBMISSION	03.13.2020

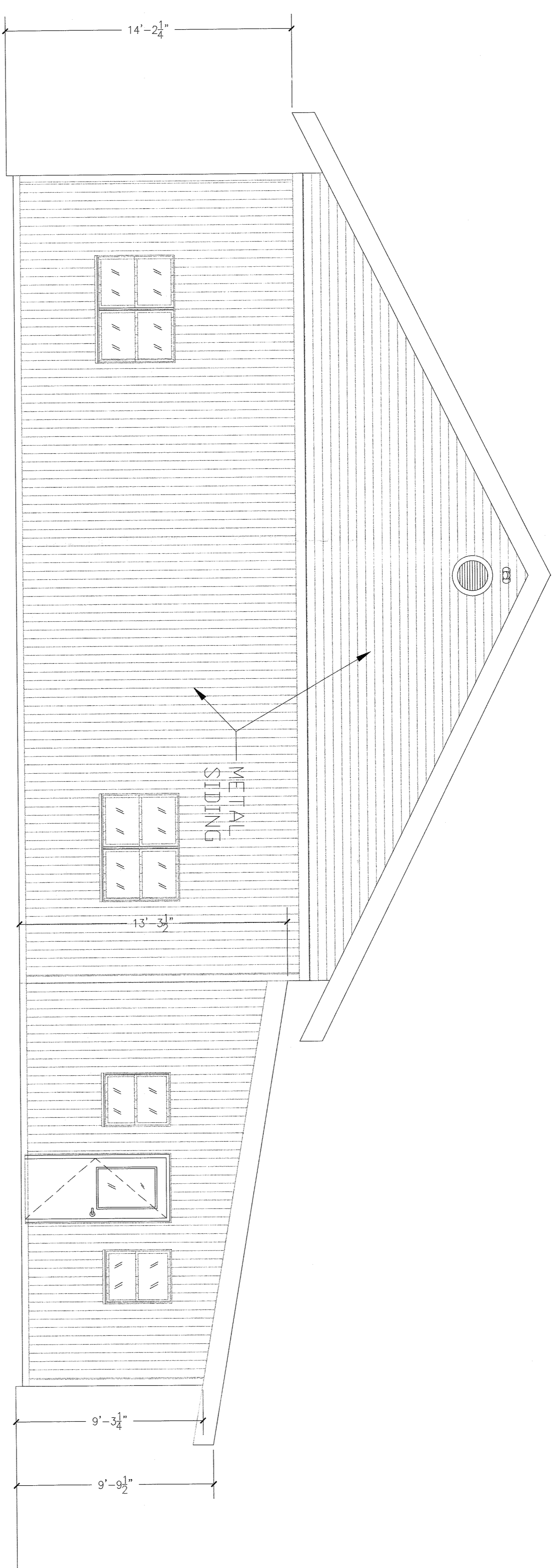
Use, reproduction or dissemination only for work of this firm and the copyright set forth above the print without consent of © Zubatkin & Associates, P.A. Copyright 2020

**PROJECT TITLE**  
UJA FEDERATION NY  
PEARL RIVER - 927 / TWELVE TREALS  
DAY CAMP PROPOSED IMPROVEMENTS  
667 Rt. ALVET ROAD PEARL RIVER  
(44 HENRY KAUFMANN RD. ORANGETOWN,  
ORANGETOWN, NY)

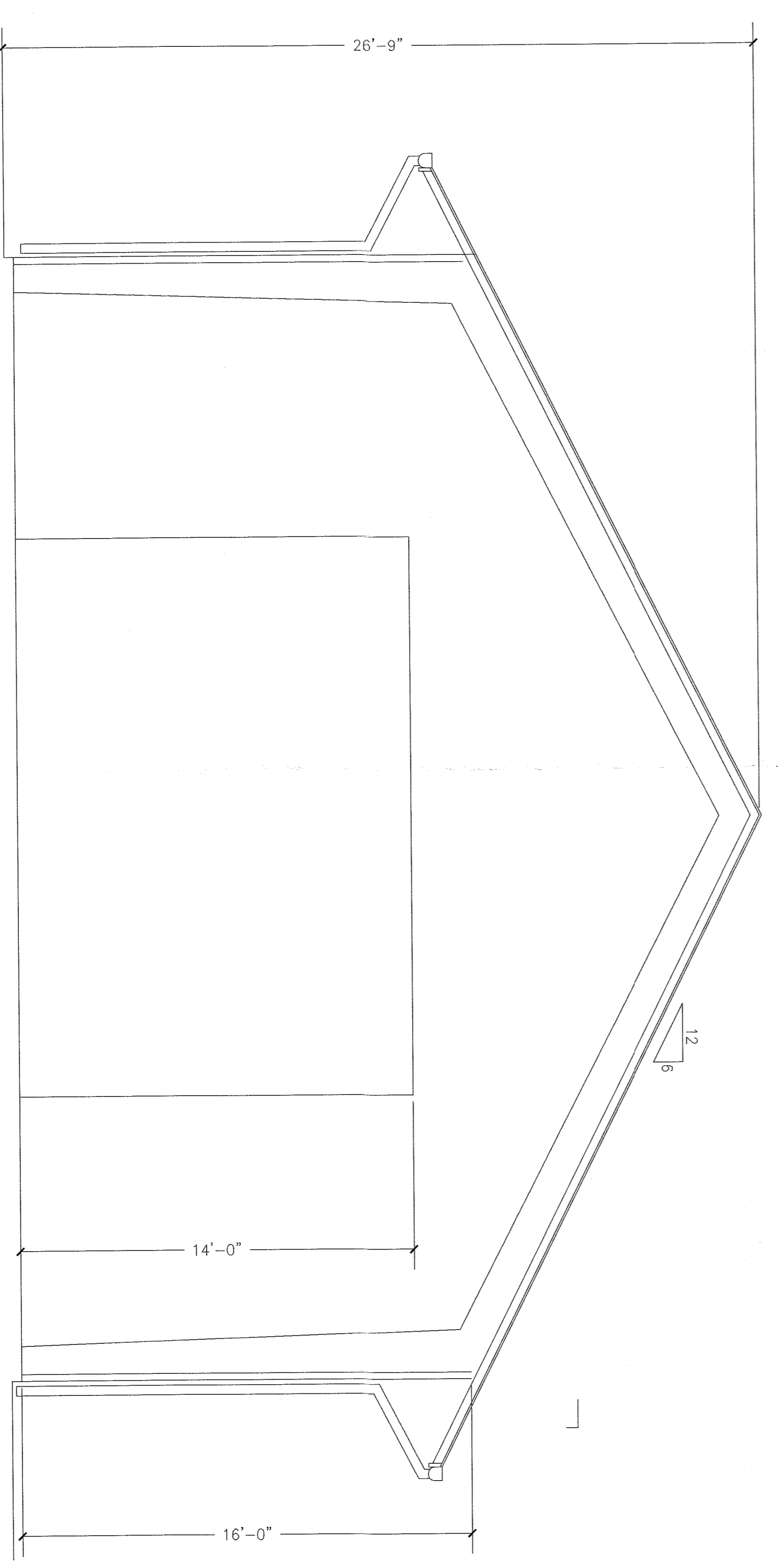
**AGENCY**

**DRAWING TITLE**  
CAMP SERVICES BUILDING

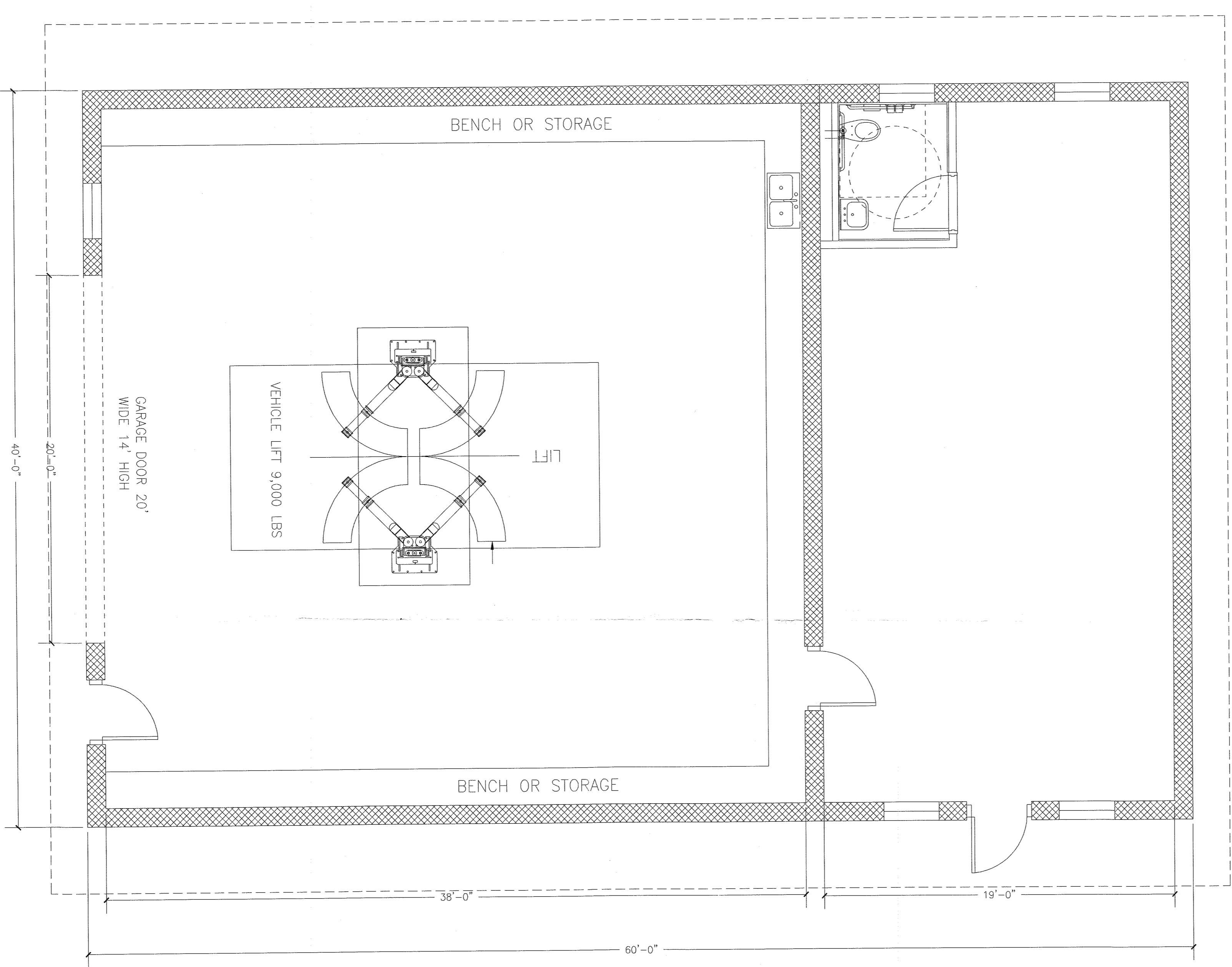
**SCALE** PROJECT NO. 18-786  
DRAWN BY 18-786  
CHECKED BY A-3  
DATE



**2** ELEVATION  
1/4" = 1'-0"



**2** SECTION  
1/4" = 1'-0"



**1** FLOOR PLAN  
1/4" = 1'-0"



**UJA Federation**  
NEW YORK  
**HENRY KAUFMANN**  
**CAMPGROUNDS**  
DAY CAMP PROPOSED  
IMPROVEMENTS

667 BLAUVELT ROAD, PEARL RIVER  
(44 HENRY KAUFMANN RD,  
ORANGEBURG, ORANGECROWN, NY)

**ZUBATKIN**  
Owner Representation, LLC  
333 W 52 ST, 6TH FL, NY 10019

**ZASKORSKI & ASSOCIATES**  
ARCHITECTS, A.I.A., PC  
247 West 35th Street, 16th fl,  
New York, NY 10001  
212-239-7212 www.zaskorski.com

PLANNER, CIVIL ENGINEER, LANDSCAPE ARCHITECT  
**DINVEY • TUNG • SCHWALBE**  
Intelligent Land Use

Dinvey Tung Schwabe, LLP  
One North Broadway  
White Plains, NY 10601  
P: 914.428.0010  
F: 914.428.0017

**OLA** Consulting Engineers  
50 Broadway  
Fairfield  
New York  
10532  
914.747.2800  
ola.com

**RSE ASSOCIATES**  
18 SECOND AVENUE  
PORT WASHINGTON, NY 11050  
212.776.4255 x402  
liam.ohanian@rsesociates.com  
www.rsesociates.com

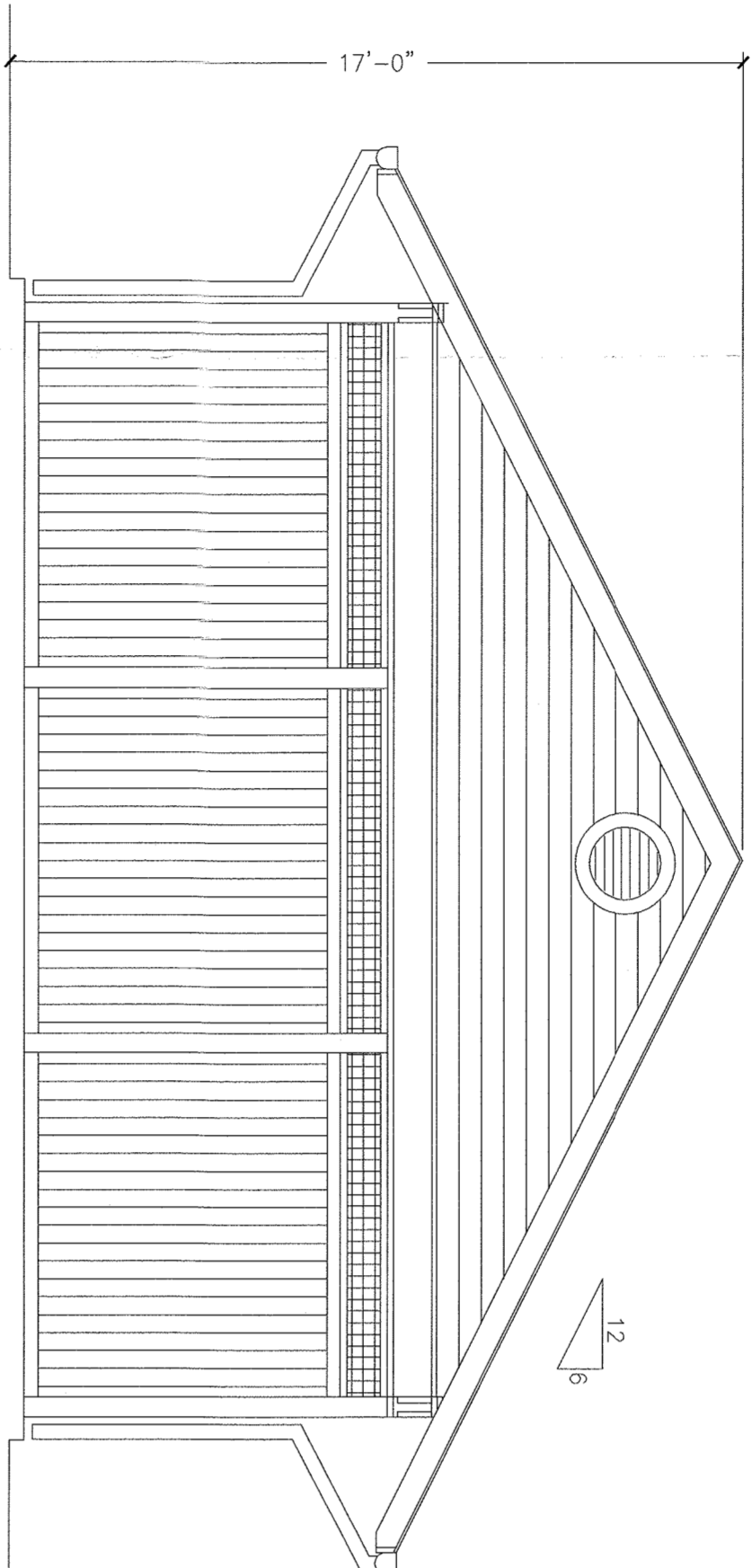
No.	ISSUE OR REVISION	DATE
1	PLANNING BOARD SUBMISSION	03.13.2020
2		
3		

No Use, reproduction or dissemination may be made of this drawing and its contents without the prior written consent of Zaskorski & Associates, A.I.A., PC (2020/03/13)

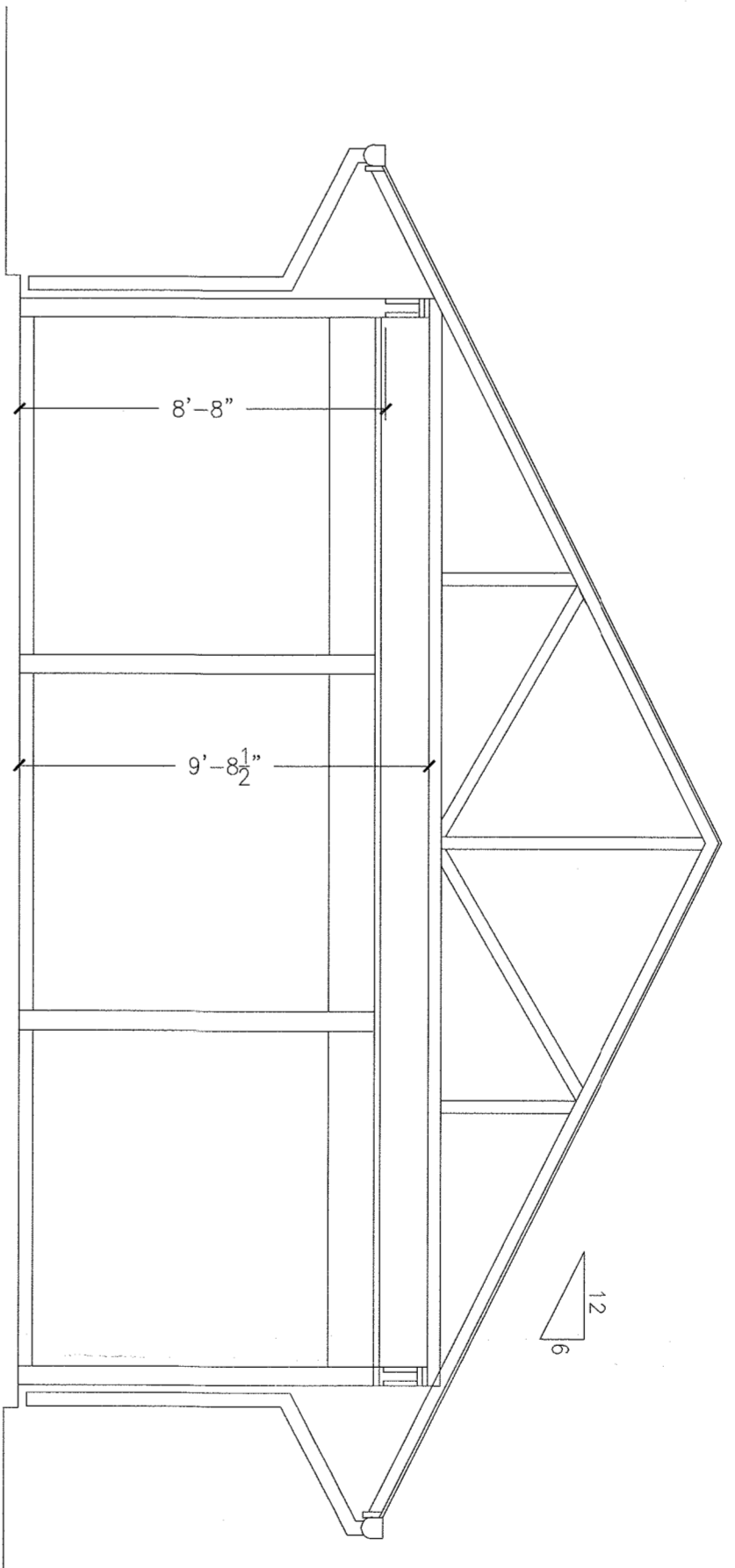
**UJA FEDERATION NY**  
PEARL RIVER - 92Y / TWELVE TRAILS  
DAY CAMP PROPOSED IMPROVEMENTS  
667 BLAUVELT ROAD, PEARL RIVER  
ORANGECROWN, NY

**CAMP SERVICES SHELTER**

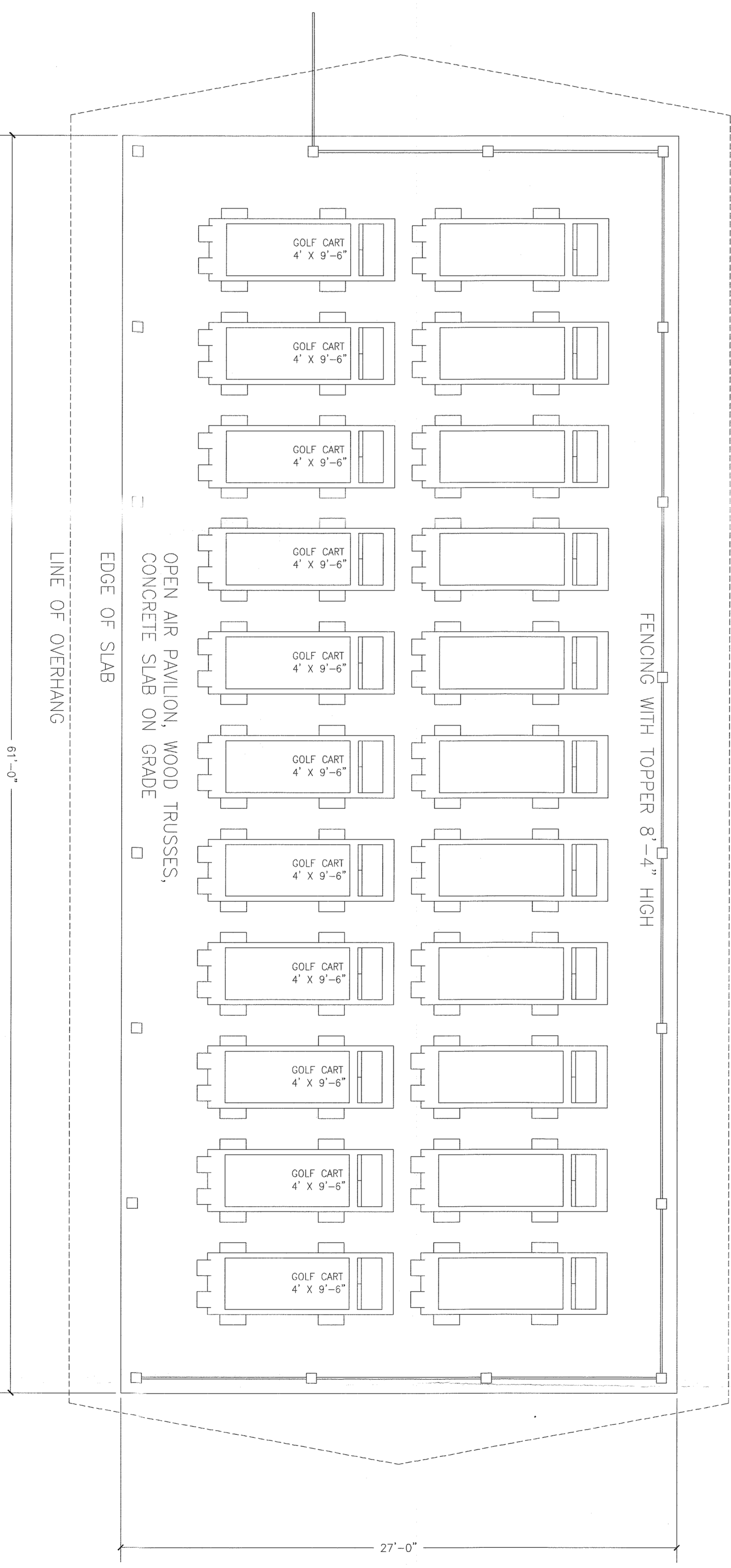
SCALE	PROJECT NO.
1/4" = 1'-0"	18-148
DRAWN BY	DRAWING NO.
CHECKED BY	A-4
DATE	



**3** ELEVATION  
1/4" = 1'-0"



**2** SECTION  
1/4" = 1'-0"



**1** FLOOR PLAN  
1/4" = 1'-0"

