

GRAPHICS CENTER — 2nd FLOOR ALTERATION

PALISADES NY

THE HOLT GROUP ARCHITECTS

THE BARN'S OFFICE CENTER
 SUITE 207 STONELEIGH AVE.
 CARMEL, NEW YORK
 914-279-8282

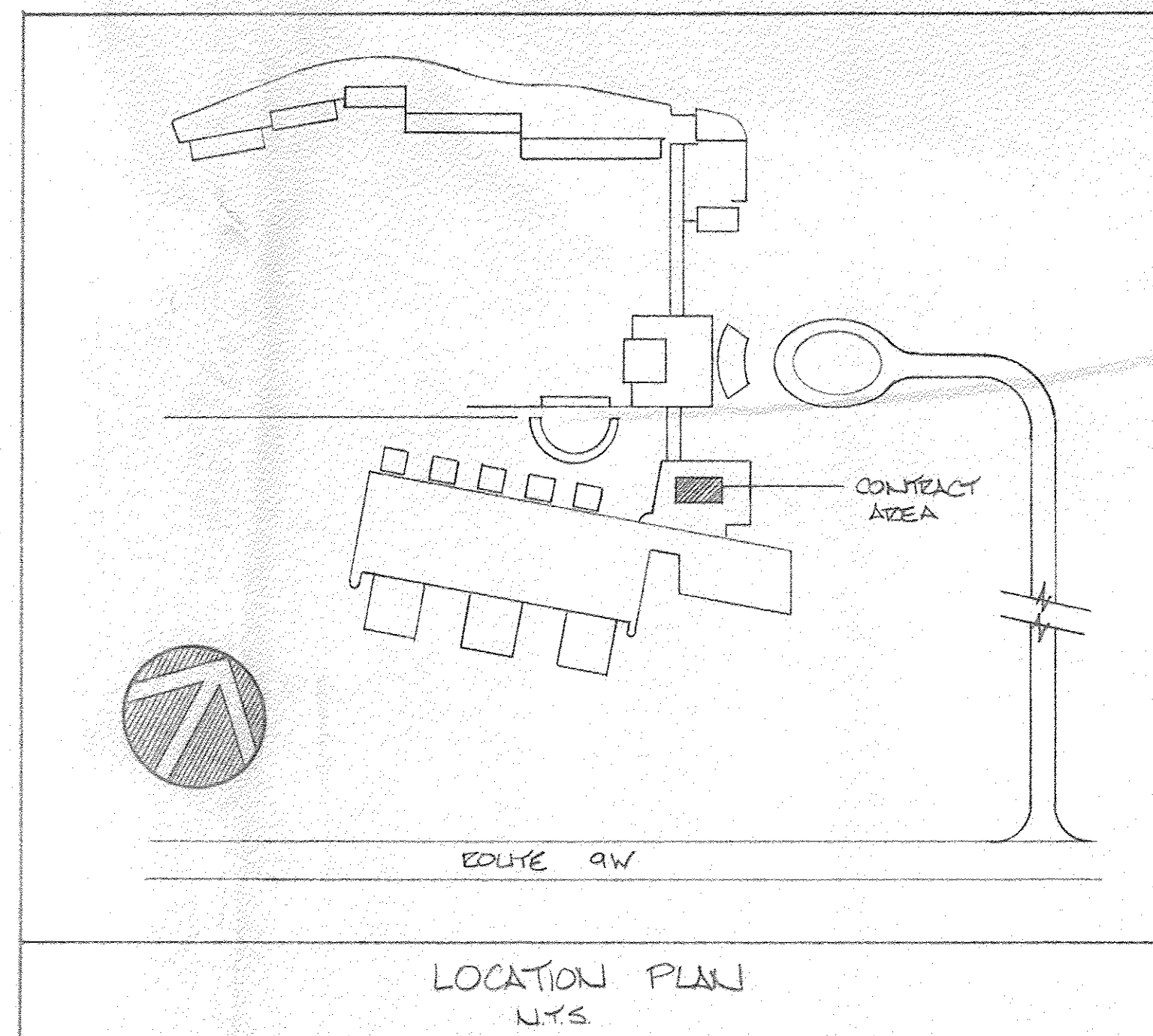
CONSULTANTS

MECHANICAL ENGINEER —

FRANK SCANDALE
 WATERMELLON HILL RD.
 MAHOPAC, NEW YORK
 914-628-8141

ELECTRICAL ENGINEER —

ARTHUR R. BREUER, P.E.
 24 N GREENLY AVE.
 CHAPPAQUA, NEW YORK
 914-238-5433

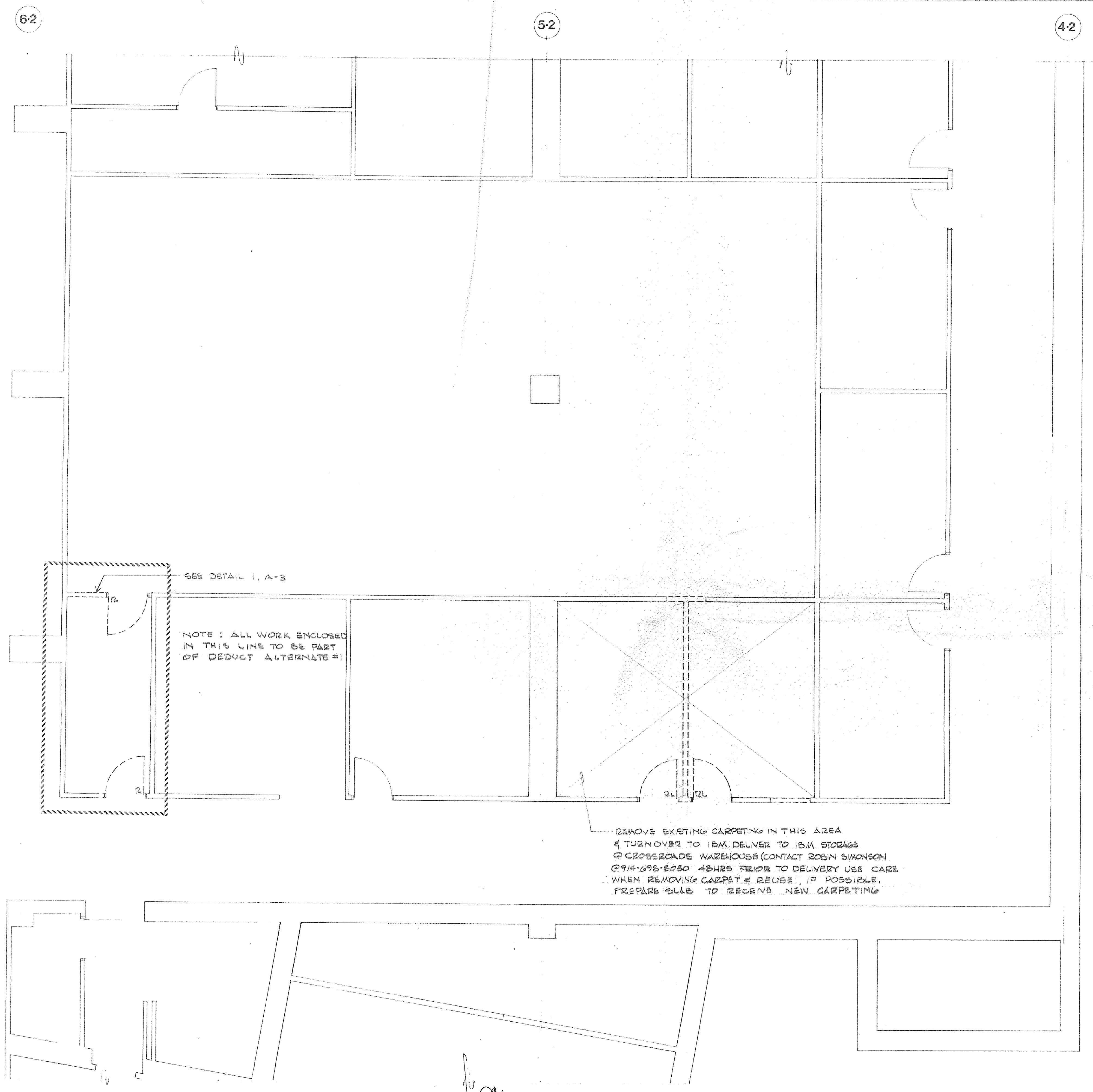


RECEIVED
 JUN 28 1990
 ZONING BLDG. DEPT.
 TOWN OF ORANGETOWN

LIST OF DRAWINGS

- A-1 DEMOLITION PLAN
- A-2 DEMOLITION REFLECTED CEILING PLAN
- A-3 CONSTRUCTION PLAN
- A-4 REFLECTED CEILING PLAN
- A-5 FINISH PLAN
- M-1 MECHANICAL — CONSTRUCTION PLAN
- M-2 MECHANICAL — SPRINKLER PLAN
- E-1 ELECTRICAL — NOTES, SYMBOLS, SCHEDULES, AND DATA DETAILS
- E-2 ELECTRICAL — LIGHTING PLAN
- E-3 ELECTRICAL — POWER PLAN
- E-4 ELECTRICAL — DATA CABLE ROUTING
- E-5 ELECTRICAL — PATCH PANEL ROOM

PERMIT COPY PLANS
 A set of these plans shall be kept at the building site open to inspection by the Building Department. Work shall conform with the State Building Code, and shall be subject to the various stages of construction.
 Building No. 23710
 Date Issued 8/6/90
 Inspector [Signature]



LEGEND	
SYMBOL	DESCRIPTION
	EXISTING DOOR & FRAME TO BE REMOVED
	EXISTING DOOR & FRAME TO BE RELOCATED W/ EXISTING COAT HOOKS
	EXISTING DOOR & FRAME TO REMAIN
	NEW OR RELOCATED DOOR & FRAME. FOR NUMBER INDICATION SEE DOOR SCHEDULE
	METAL STUD & GYPSUM BOARD PARTITION TO BE REMOVED
	EXISTING PARTITION TO REMAIN
	NEW 3 1/2" METAL STUD & 5/8" GYPSUM BOARD PARTITION, PATCH OPENING TO MATCH EXISTO.
	FLOURESCENT LIGHT FIXTURE TO BE REMOVED
	EXISTING FLOURESCENT LIGHT FIXTURE TO REMAIN
	NEW OR RELOCATED 2'x2' FLOURESCENT LIGHT FIXTURE
	NEW 2 1/2" MTL. STUD WITH 2 LAYERS 5/8" GYPSUM BD. FACING EACH SIDE (2 HOUR RATED)
	WIRE MESH PARTITION
	TEMPORARY DUST PARTITION

ALTERNATES

DEDUCT ALTERNATE #1:
 SUBMIT A DEDUCT ALTERNATE PRICE TO THE BASE BID FOR ELIMINATING ALL WORK SHOWN IN THE LINE.

DEDUCT ALTERNATE #2:
 SUBMIT A DEDUCT ALTERNATE PRICE TO THE BASE BID FOR ELIMINATING THE WIRE MESH PARTITIONS

the HOLT GROUP The Barns Office Center Suite • 207 Stoneleigh Avenue • Carmel • New York • 10512 914 • 279 • 8282 ARCHITECTS		CONSULTANTS			PROJECT: IBM • PALISADES, N.Y. GRAPHICS CENTER 2nd FLOOR ALTERATION	
		NO. BY REVISION DATE	NO. BY REVISION DATE	TITLE: Demolition Plan SCALE: 1/4" = 1'-0" DATE: 31 MAY 90 PROJECT NO. DRAWN BY: E. BERTS		

6-2

5-2

4-2

GENERAL NOTES.

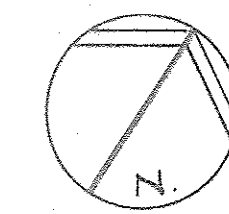
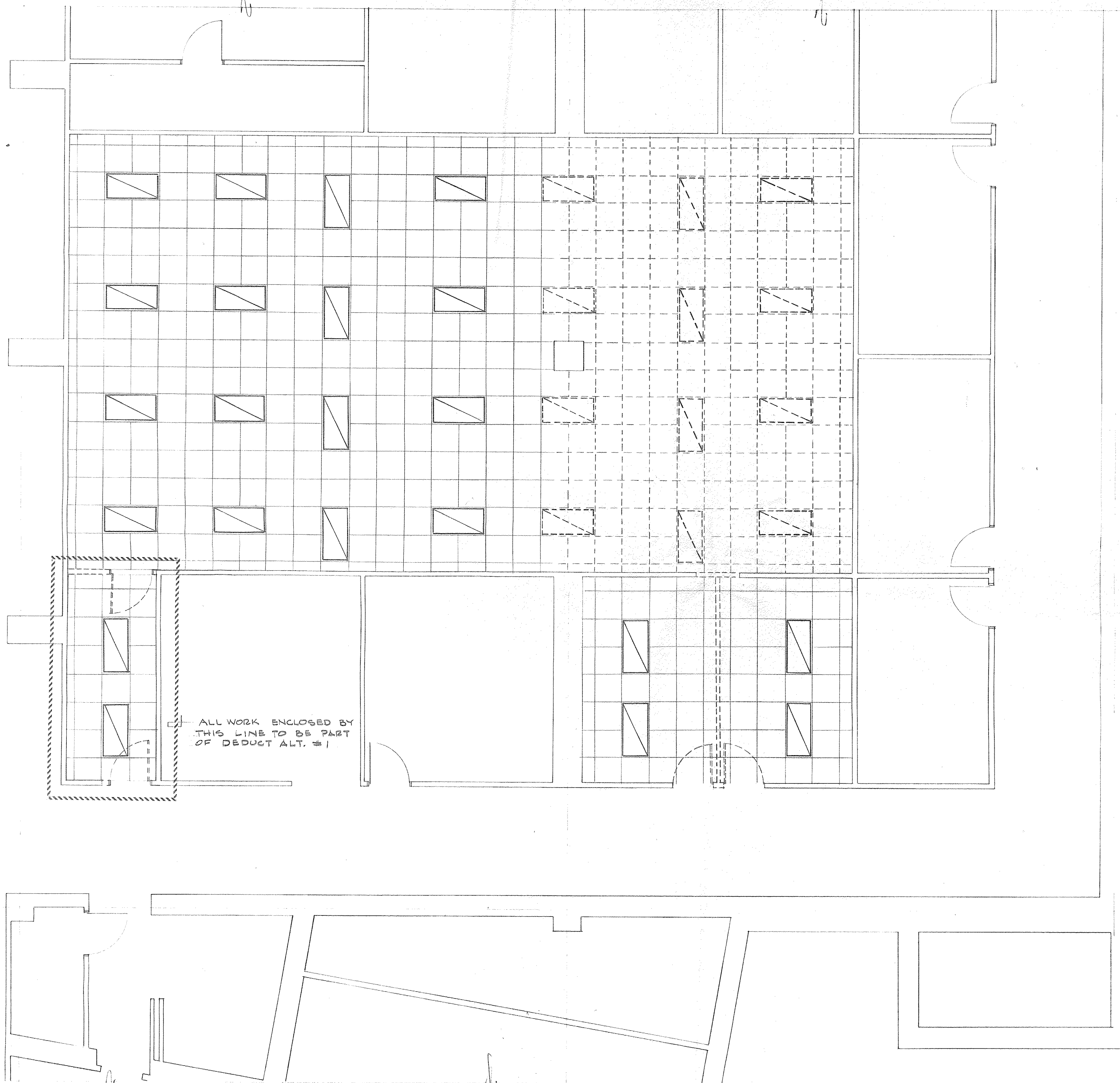
- 1. REMOVE EXISTING HUNG CEILING TILES & GRID WHERE INDICATED BY DASHED LINE, FOR INSTALLATION OF NEW GRAPHICS ROOM. REINSTALL CEILING AS INDICATED ON REFL. CEIL. PLAN.

X-5

Y

Y-5

Z

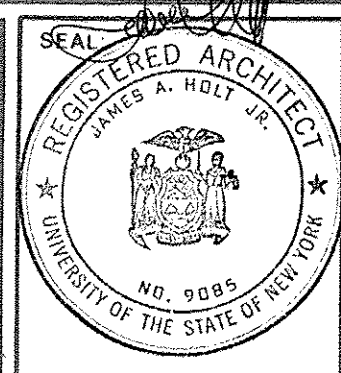


the HOLT GROUP

The Barns Office Center Suite • 207
Stoneleigh Avenue • Carmel • New York • 10512

914 • 279 • 8282

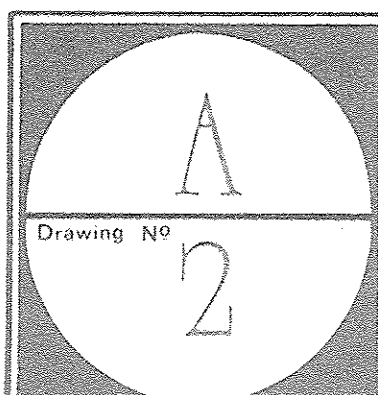
ARCHITECTS



CONSULTANTS			
NO	BY	REVISION	DATE

CONSULTANTS			
NO	BY	REVISION	DATE

PROJECT: IBM • PALISADES, N.Y.			
GRAPHICS CENTER			
2nd FLOOR ALTERATION			
TITLE: Demolition Reflected Ceiling Plan			
SCALE: 1/4" = 1'-0"	DATE: 31 MAY 90	PROJECT NO:	DRAWN BY: EBERTS



6-2

5-2

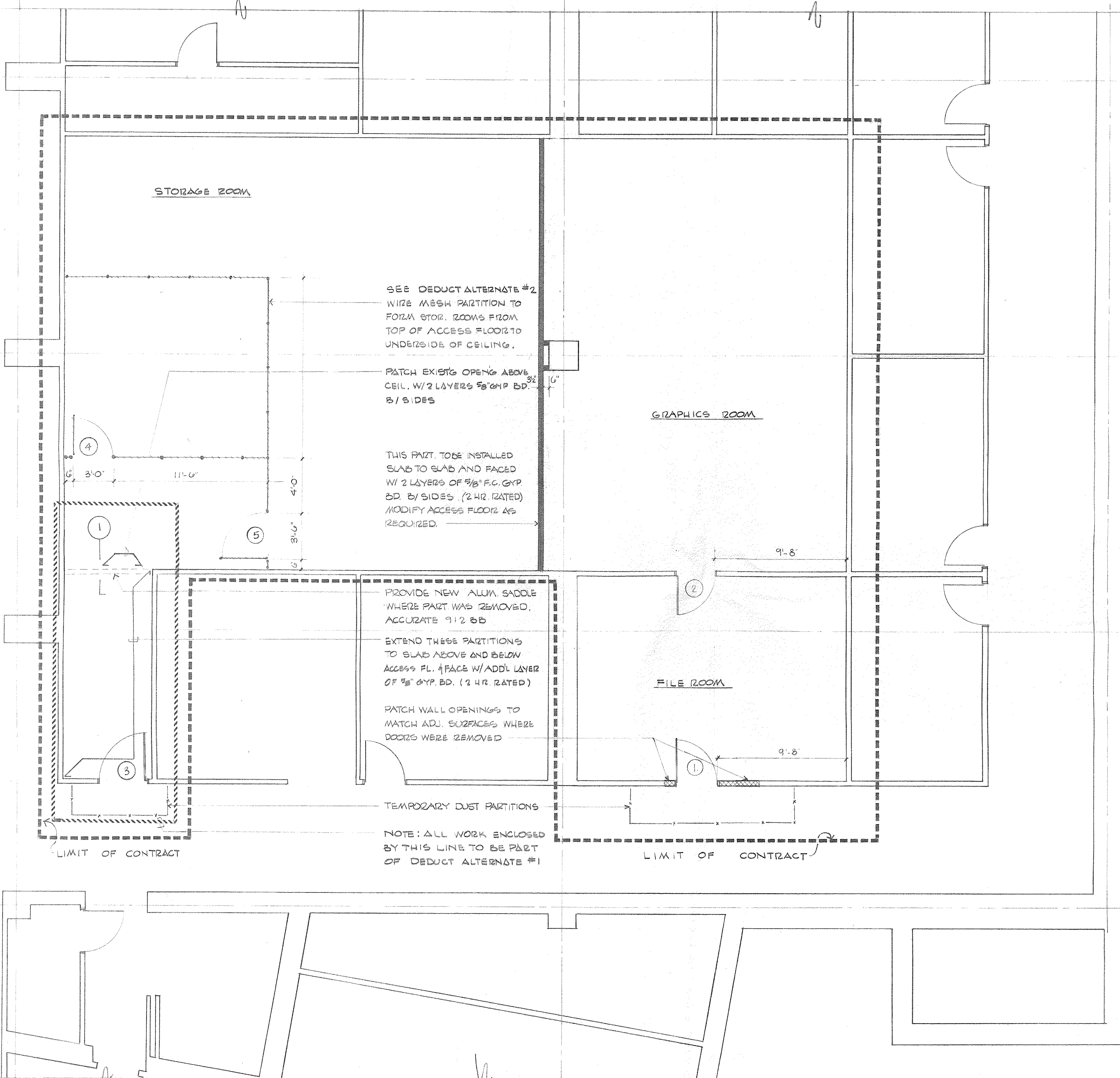
4-2

X-5

Y

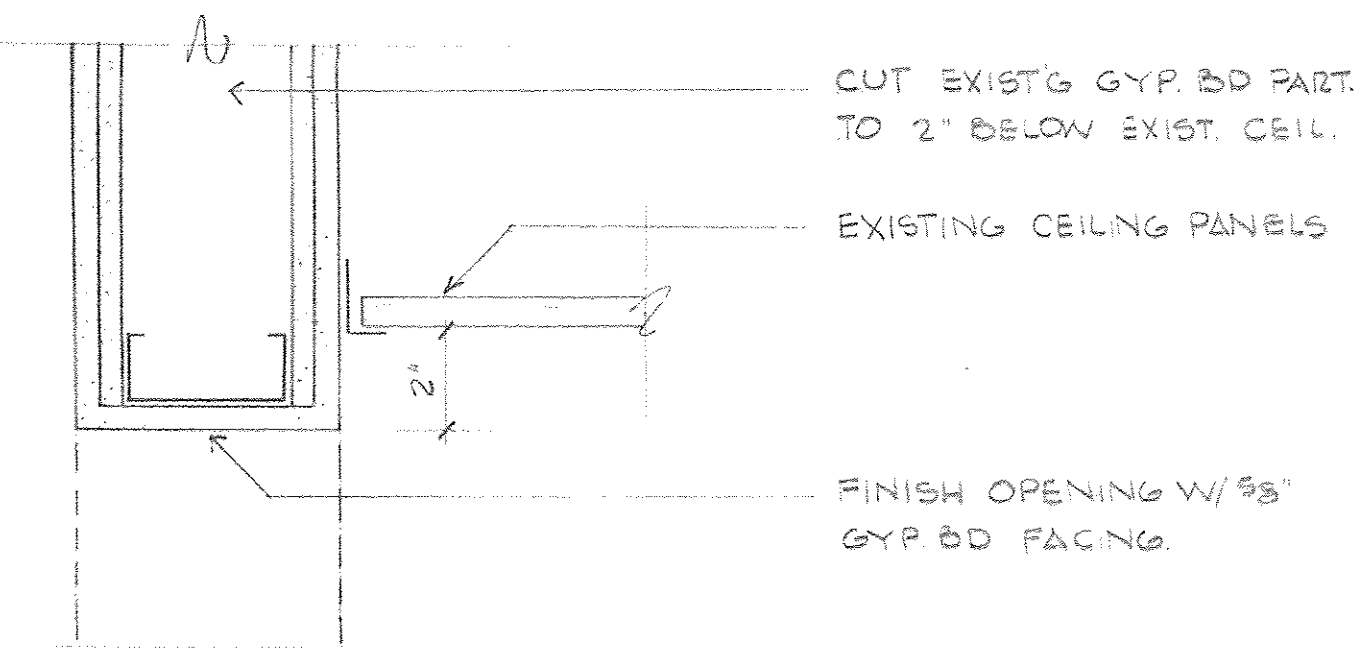
Y-5

Z



DOOR SCHEDULE						
NUMBER	TYPE	SIZE	STYLE	JAMB	HARDWR	REMARKS
1.	S.C. WOOD MAPLE VEN.	3'x 6'8"	FLUSH	METAL	A	RELOCATE EXISTING
2.	↓	↓	↓	↓	↓	↓
3.	↓	3'x 6'8"	↓	↓	B	3- RATED MATCH BLDG. STD.
4.	WIRE MESH	3'x 7'0"	-	-	C	
5.	↓	3'x 7'0"	-	-	C.	

HARDWARE SCHEDULE	
LETTER	DESCRIPTION
A	RELOCATE ALL EXISTING HARDWARE W/ DOORS
B	RELOCATE ALL EXISTING HARDWARE FROM DOOR REMOVED AND REINSTALL ON NEW DOOR (INCLUDING CLOSERS)
C	PROVIDE MORTISE LOCK CYLINDER AS SUPPLIED W/ WIRE MESH PARTITIONS.
NOTE: IBM TO PROVIDE ALL LOCK CORES.	



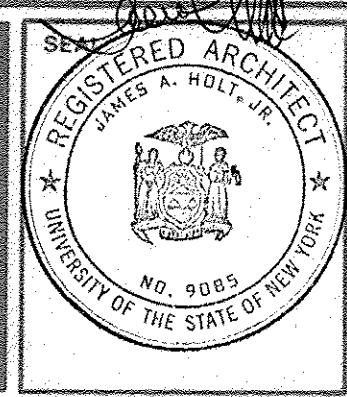
1. SOFFIT DETAIL
3" = 1'-0"

the HOLT GROUP

The Barns Office Center Suite • 207
Stoneleigh Avenue • Carmel • New York • 10512

ARCHITECTS

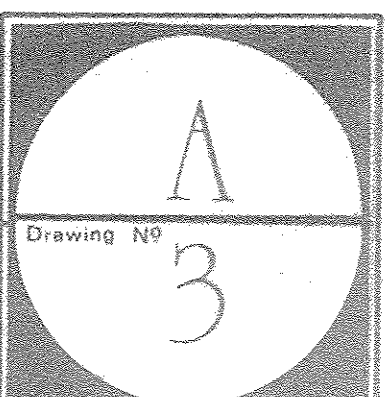
914 • 279 • 8282



CONSULTANTS:				
NO.	BY	REVISION	DATE	

HARDWARE SCHEDULE				
NO.	BY	REVISION	DATE	
1			8 JUN 90	

PROJECT:	IBM • PALISADES, N.Y.		
	GRAPHICS CENTER 2nd FLOOR ALTERATION		
TITLE:	Construction Plan		
SCALE:	1/4" = 1'-0"	DATE:	31 MAY 90
		PROJECT NO.	
		DRAWN BY:	EBZTS



6-2

5-2

4-2

X-5

Y

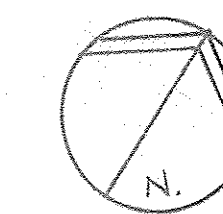
Y-5

Z



GENERAL NOTES.

1. REINSTALL HUNG CEILING TILE & GRID IN GRAPHICS ROOM AT 10'-0" A.F.F. PROVIDE NEW TILE, GRID, HANGERS, ETC. TO MATCH EXISTING AS REQUIRED FOR A COMPLETE INSTALLATION. REPLACE DAMAGED OR DISCOLORED TILES.
2. CEILING IN STORAGE ROOM SHALL REMAIN INTACT. PATCH AS REQ'D WHERE DISTURBED BY CONSTRUCTION.
3. CEILING IN FILE ROOM SHALL REMAIN INTACT. PATCH AS REQ'D WHERE DISTURBED BY CONSTRUCTION.

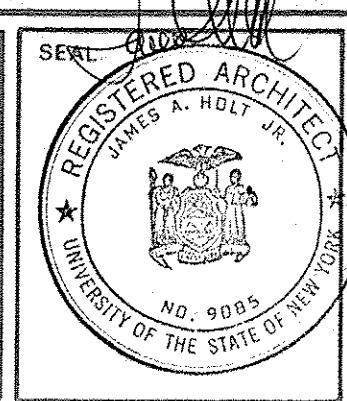


the HOLT GROUP

The Barns Office Center Suite • 207
Stoneleigh Avenue • Carmel • New York • 10512

914 • 279 • 8282

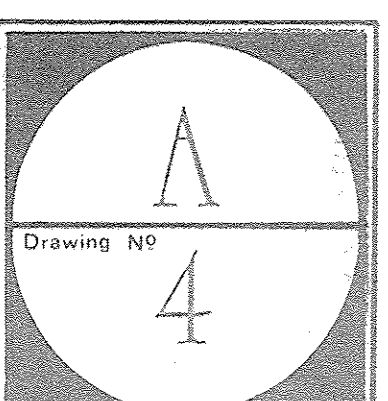
ARCHITECTS



CONSULTANTS			
NO	BY	REVISION	DATE

CONSULTANTS			
NO	BY	REVISION	DATE

PROJECT: IBM • DALISADES, N.Y.			
GRAPHICS CENTER 2nd FLOOR ALTERATION			
TITLE: Reflected Ceiling Plan			
SCALE: 1/4" = 1'-0"	DATE: 31 MAY 90	PROJECT NO.	DRAWN BY: EBERTE



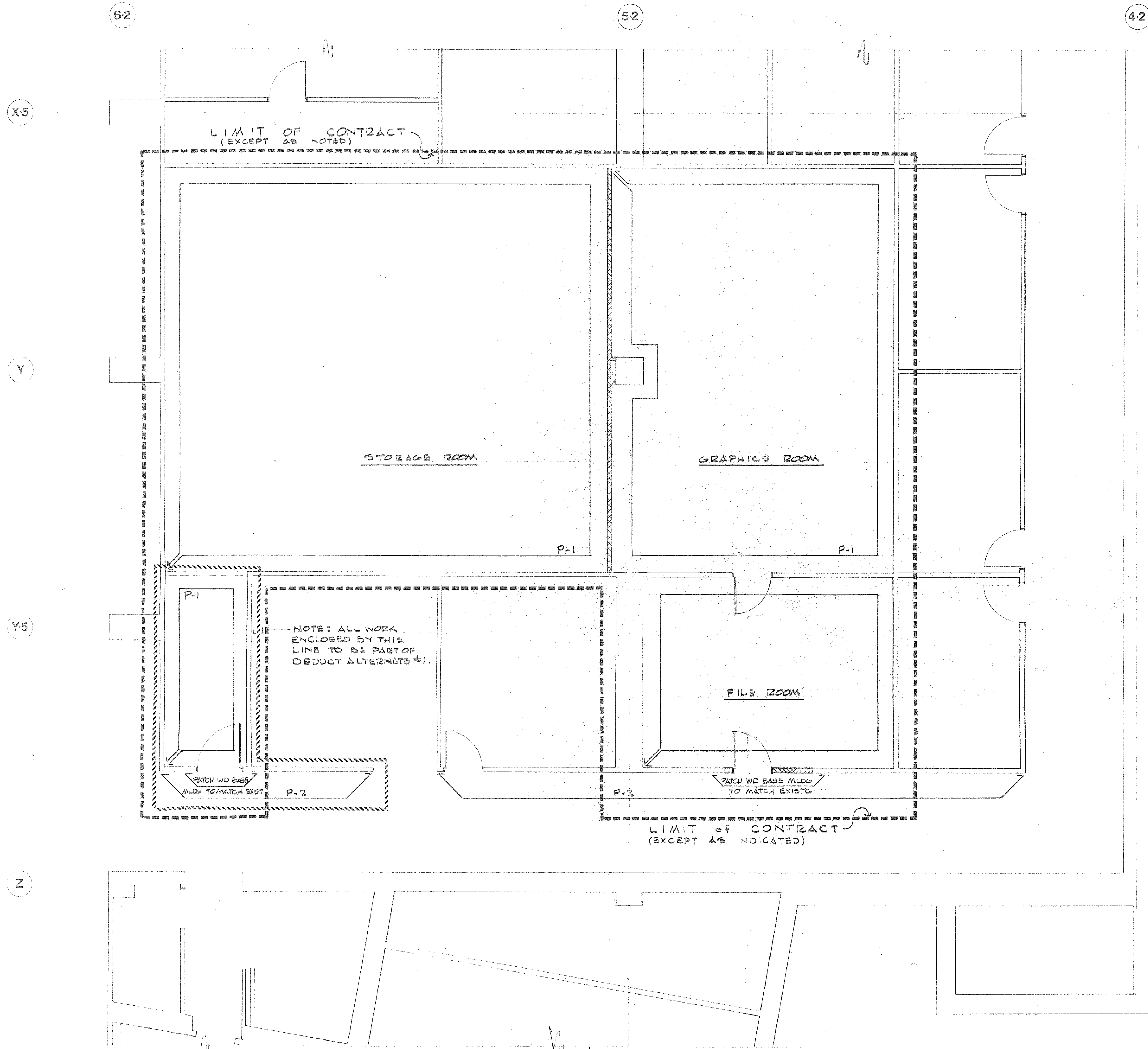
FINISH SCHEDULE

FLOORING:

- FILE ROOM & GRAPHICS ROOM SHALL RECEIVE NEW GLUE DOWN BROADLOOM CARPETING SUPPLIED BY IBM. CONTRACTOR SHALL PICK UP CARPETING FROM IBM STORAGE @ CROSSROADS WAREHOUSE (CONTACT ROBIN SIMONSON 914-698-8080 48 HRS PRIOR TO DELIVERY)
- PROVIDE NEW VINYL BASE MOULDING # V6700 BY FLEXCO IN FILE RM. & GRAPHICS ROOM & AS REQ'D BY CONSTRUCTION IN STORAGE ROOM. PATCH WOOD CORRIDOR BASE MOULDING TO MATCH EXISTING WHERE DISTURBED BY CONSTRUCTION

WALL FINISHES:

- INDICATES LIMIT OF NEW WALL FINISH
- P-1 PRATT & LAMBERT #Y414W (SILVER LINING)
- P-2 SHERWIN-WILLIAMS PAINT TO MATCH EXIST.
- ALL WALL SURFACES NOT OTHERWISE INDICATED SHALL BE PAINTED TO MATCH BLDG. STANDARD.
- NEW HOLLOW METAL FRAMES TO BE PAINTED TO MATCH BLDG. STD.
- CONTRACTOR SHALL SUBMIT SAMPLES OF ALL FINISH PRODUCTS TO ARCHITECT & IBM FOR APPROVAL.

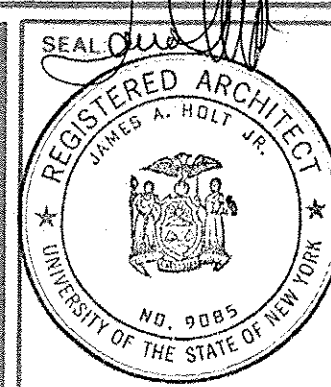


the HOLT GROUP

The Barns Office Center Suite • 207
Stoneteigh Avenue • Carmel • New York • 10512

914 • 279 • 8282

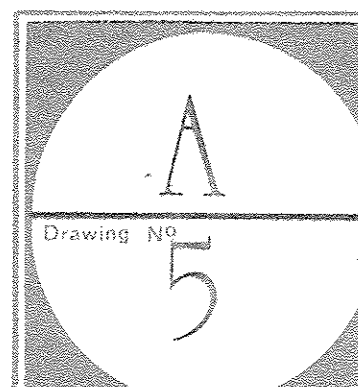
ARCHITECTS



CONSULTANTS			
NO	BY	REVISION	DATE

FINISH SCHEDULE			
NO	BY	REVISION	DATE
1		FINISH SCHEDULE	2 JUN 90

PROJECT:	IBM • PALISADES, N.Y.		
	GRAPHICS CENTER 2nd FLOOR ALTERATION		
TITLE:	Finish Plan		
SCALE:	1/4" = 1'-0"	DATE:	21 MAY 90
	PROJECT NO		DRAWN BY EBERTS



6-2

5-2

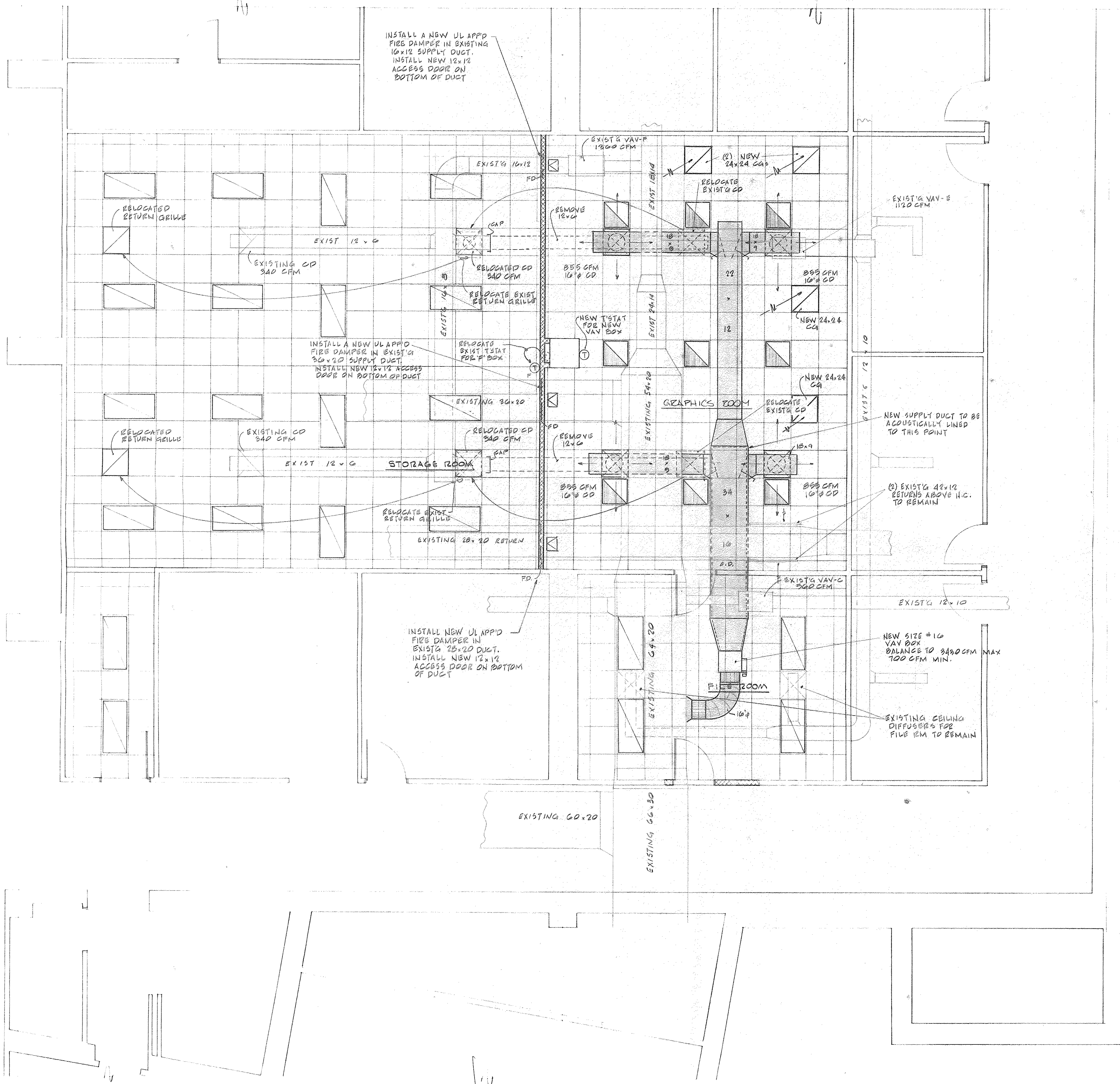
4-2

X-5

Y

Y-5

Z



SYMBOLS

- CD CEILING DIFFUSER - ROUND NECK - 24.24 PERFORATED FACE FOR LAY-IN TILE - AIR DEVICES MODEL PB WITH VOLUME DAMPER TO MATCH BLDG STD.
- CG CEILING GRILLE - BETWEEN AIR - 24.24 PERFORATED FACE PLATE TO MATCH EXISTG
- Ⓣ THERMOSTAT - PNEUMATIC - JOHNSON CONTROLS, TO MATCH BLDG STD.
- VAV VARIABLE AIR VOLUME
- CFM CUBIC FEET AIR PER MINUTE
- FD FUSIBLE LINK - UL APPROVED FIRE DAMPER
- SUPPLY AIR
- ← RETURN AIR
- EXIST 12.0 EXISTING DUCTWORK WITH APPROX SIZE INDICATED
- NEW DUCTWORK WITH INTERNAL SCOOP DAMPER FOR BRANCH TAKE-OFF

NOTES:

- 1) NEW VAV BOX FOR NEW GRAPHICS ROOM SHALL BE AIR DEVICES COOP (DORRIS COLEMAN) SINGLE DUCT VAR AIR VOL MODEL SDVP - PNEUMATIC WITH JOHNSON CONTROLS DAMPER MOTOR, SIZE #16, 3490 CFM MAX, 700 CFM MIN, 0.18 TSP
- 2) REUSE EXISTING DIFFUSERS, GRILLS, ETC. WHERE POSSIBLE OR WHERE INDICATED ON DWG. NEW DIFFUSERS TO MATCH EXISTG.

the HOLT GROUP

The Barns Office Center Suite • 207
Stoneleigh Avenue • Carmel • New York • 10512

ARCHITECTS

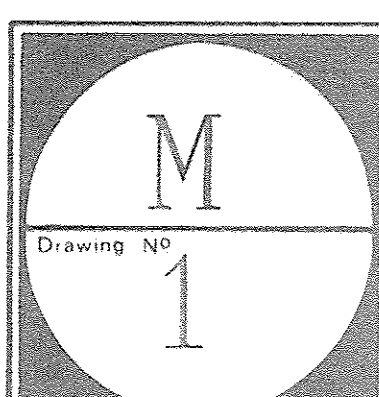
914 • 279 • 8282

SEAL

CONSULTANTS			
NO.	BY	REVISION	DATE

CONSULTANTS			
NO.	BY	REVISION	DATE

PROJECT: IBM • PALISADES, N.Y.			
GRAPHICS CENTER 2nd FLOOR ALTERATION			
TITLE: Mechanical Construction Plan			
SCALE: 1/8" = 1'-0"	DATE: 31 MAY 90	PROJECT NO: 9011	DRAWN BY: SCANDALE



6-2

5-2

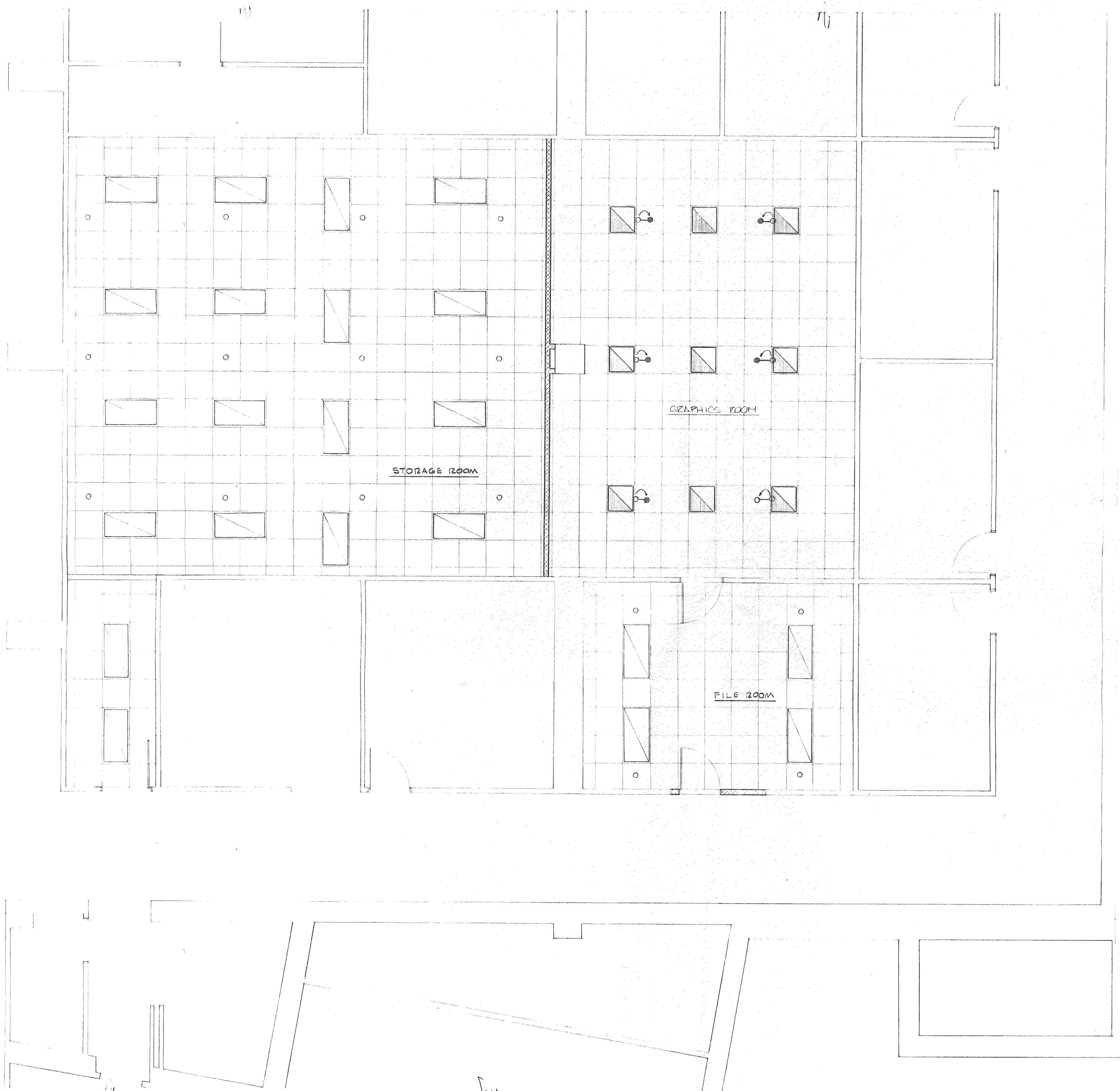
4-2

X-5

Y

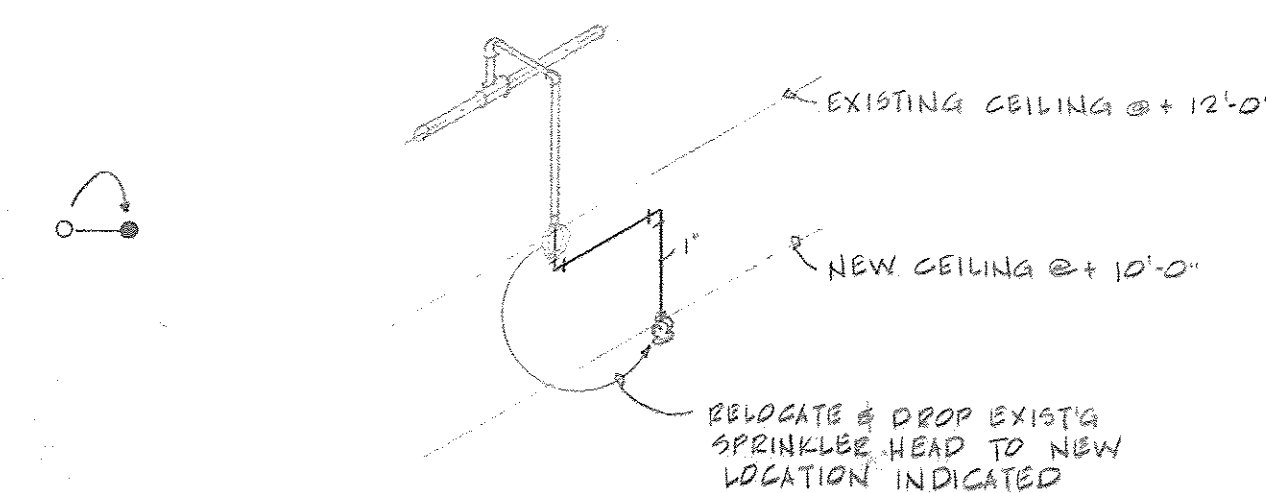
Y-5

Z



SYMBOLS

○ EXISTING SPRINKLER HEAD TO REMAIN



NOTE: ALL SPRINKLER WORK SHALL BE PERFORMED ON OVERTIME SO AS NOT TO DISTURB NORMAL BUILDING FUNCTIONS. SHUT DOWN & DRAINAGE FOR REQUIRED WORK SHALL BE FULLY COORDINATED WITH FIRE DEPT., INSURANCE UNDERWRITERS, AND BLDG. MGMT.

the HOLT GROUP

The Barns Office Center Suite • 207
Stoneleigh Avenue • Carmel • New York • 10512

914 • 279 • 8282

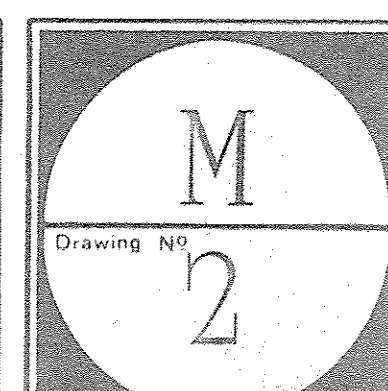
ARCHITECTS

SEAL

CONSULTANTS			
NO	BY	REVISION	DATE

NO	BY	REVISION	DATE

PROJECT: IBM • PALISADES, N.Y.			
GRAPHICS CENTER 2nd FLOOR ALTERATION			
TITLE: Sprinkler Plan			
SCALE: 1/8" = 1'-0"	DATE: 31 MAY 90	PROJECT NO: 9011	DRAWN BY: SCANDALE



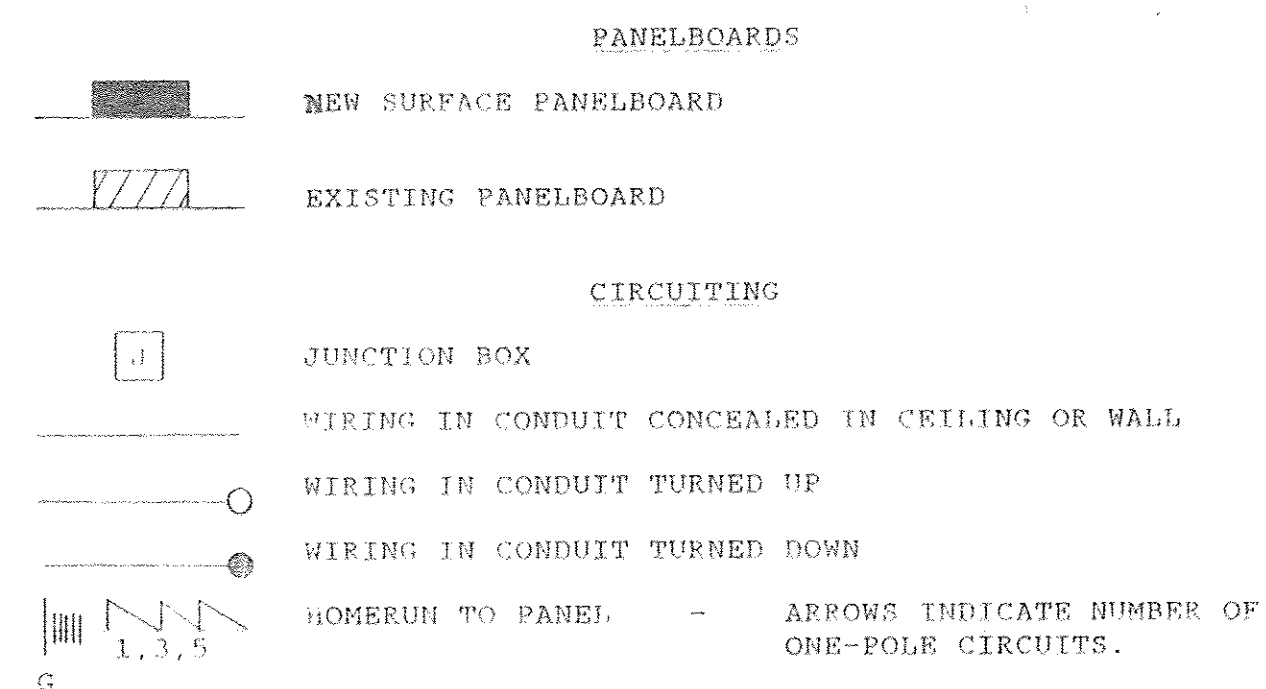
ELECTRICAL GENERAL NOTES

1. HOMERUN NUMBERS AT SWITCHES, RECEPTACLES AND FIXTURES DESIGNATE CIRCUIT NUMBERS. WHERE A PARENTHESIS () IS SHOWN FOR A MULTI-POLE CIRCUIT, NUMBERS IN PARENTHESIS DESIGNATE PANEL POLES ASSOCIATED WITH A SINGLE CIRCUIT BREAKER. ACTUAL CIRCUIT NUMBERS AND HOMERUN LOCATIONS SHALL BE AS PER FIELD CONDITIONS. CONTRACTOR SHALL BALANCE PHASES ON PANELBOARDS. PROVIDE MULTI-CIRCUITED HOMERUNS WITH COMMON NEUTRAL TO A MAXIMUM OF (3) 120 VOLT CIRCUITS PER HOMERUN, UNLESS OTHERWISE NOTED.
2. CONTRACTOR SHALL WIRE ALL DEVICES AND PROVIDE ALL CONDUIT AND CABLE TO MAKE ALL SYSTEMS COMPLETE AND OPERABLE IN ACCORDANCE WITH THE INTENT OF THE DRAWINGS, AND THE NATIONAL ELECTRIC CODE.
3. EXACT LOCATION OF ALL OFFICE RECEPTACLE AND DATA OUTLETS SHALL BE COORDINATED WITH ARCHITECT AND FINAL FURNITURE LAYOUT.
4. CONDUIT AND WIRING MAY BE EXPOSED IN UNFINISHED AREAS AND SHALL BE CONCEALED IN FINISHED AREAS UNLESS OTHERWISE NOTED. WIRING ON EXISTING CONCRETE BLOCK WALLS MAY BE RUN IN WIREMOLD WITH SURFACE BOXES SUBJECT TO APPROVAL OF ARCHITECT.
5. WALL MOUNTED EQUIPMENT (SWITCHES, RECEPTACLES, BOXES, ETC...) SHALL BE SURFACE MOUNTED IN UNFINISHED AREAS AND ON EXISTING CONCRETE BLOCK WALLS AND FLUSH MOUNTED IN FINISHED AREAS.
6. CONTRACTOR IS RESPONSIBLE FOR ALL CHANGES TO WORK OF ALL TRADES NECESSITATED BY PROVIDING EQUIPMENT DIFFERING IN ANY RESPECT FROM THAT INDICATED.

ELECTRICAL ALTERATION NOTES

1. VERIFY ALL EXISTING CIRCUITING IN THE FIELD BY RINGING. REWORK EXISTING CIRCUITING AS REQUIRED TO ACCOMMODATE REVISED LOAD ARRANGEMENT. PROVIDE NEW HOMERUNS AS NECESSARY.
2. ELECTRICAL ITEMS SHOWN AS EXISTING ON THE DRAWINGS SHALL REMAIN UNLESS OTHERWISE NOTED.
3. REMOVE ALL ELECTRICAL OUTLETS, SWITCHES, AND FIXTURES COMPLETE WITH ASSOCIATED WIRING, CONDUIT, ETC., FROM CEILINGS, WALLS, AND PARTITIONS THAT ARE TO BE REMOVED. WHERE THIS REMOVAL OR ANY OTHER ALTERATIONS, MAKES DEAD ELECTRICAL CIRCUITS THAT ARE TO REMAIN, INSTALL JUNCTION BOXES OR OTHER DEVICES AS NECESSARY TO KEEP THE CIRCUIT INVOLVED CONTINUOUS AND READY FOR OPERATION, OTHERWISE REMOVE WIRING BACK TO THE PANEL OR TO NEAREST ELECTRICAL ITEM THAT IS TO REMAIN. PLUG OPENINGS IN EXISTING JUNCTION BOXES WHERE WIRING OR CONDUIT IS REMOVED. DO NOT LEAVE LOOSE WIRING ABOUT.
4. EXISTING ELECTRICAL ITEMS THAT ARE BEING DISCONNECTED AND REMOVED, AND NOT BEING REUSED, SHALL BE RETURNED TO THE OWNER OR DISPOSED OF AS DIRECTED.
5. WHERE NEW WALLS ARE BEING INSTALLED IN FRONT OF EXISTING DEVICES NOT TO BE REUSED, REMOVE DEVICE, AND PULL WIRING BACK TO NEAREST ACCESSIBLE JUNCTION BOX, OR IF WIRING IS TO BE SPLICED FOR COMPLETION OF CIRCUITING TO EXISTING DEVICES TREAT AS A DEVICE WHICH IS TO REMAIN. WHERE A DEVICE IS TO REMAIN, RESET DEVICE FLUSH WITH NEW WALL OR FURRING AND PROVIDE NEW PLATE.
6. REMOVE AND REPLACE EXISTING HUNG CEILINGS AS REQUIRED TO PERMIT INSTALLATION OF NEW WORK. REPLACE ALL DAMAGED CHANNELS AND TILES.
7. EXISTING PANELS AFFECTED BY WORK SHALL HAVE PANEL DIRECTORIES UPDATED. PROVIDE NEW TYPED DIRECTORIES.

SYMBOLS - ELECTRICAL

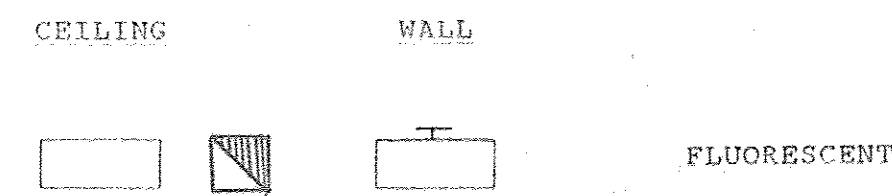


HOMERUN NUMERALS INDICATE PANEL CIRCUIT NUMBERS. WHERE INDICATED, TICS DENOTE NUMBER OF NO. 12 AWG. HOMERUNS SHALL BE NO. 12 AWG (NO. 12 AWG IF OVER 80 FT. FROM PANEL). WHERE TICS ARE NOT SHOWN REFER TO PANEL SCHEDULES OR PROVIDE REQUIRED NUMBER OF WIRES. WHERE 3 SINGLE POLE CIRCUITS 4 WIRE SHARED NEUTRAL HOMERUNS ARE INDICATED ON DRAWINGS - THE PHASE CONDUCTORS SHALL BE #12 WIRE THE NEUTRAL CONDUCTOR SHALL BE #10 WIRE AND THE GROUND SHALL BE #12, UNLESS OTHERWISE NOTED. WHERE 2 SINGLE POLE CIRCUITS 3 WIRE SHARED NEUTRAL HOMERUNS ARE INDICATED ON DRAWINGS - THE PHASE CONDUCTOR SHALL #12, THE NEUTRAL CONDUCTOR SHALL BE #10 AND THE GROUND SHALL BE #12 UNLESS OTHERWISE NOTED. FOR SINGLE POLE TWO WIRE HOMERUNS THE PHASE & NEUTRAL CONDUCTORS SHALL BE #12 AND THE GROUND SHALL BE #12. COMBINED SINGLE POLE 2 WIRE HOMERUNS SHALL COMPLY WITH WIRING PRACTICES MENTIONED ABOVE.

LIGHTING FIXTURES

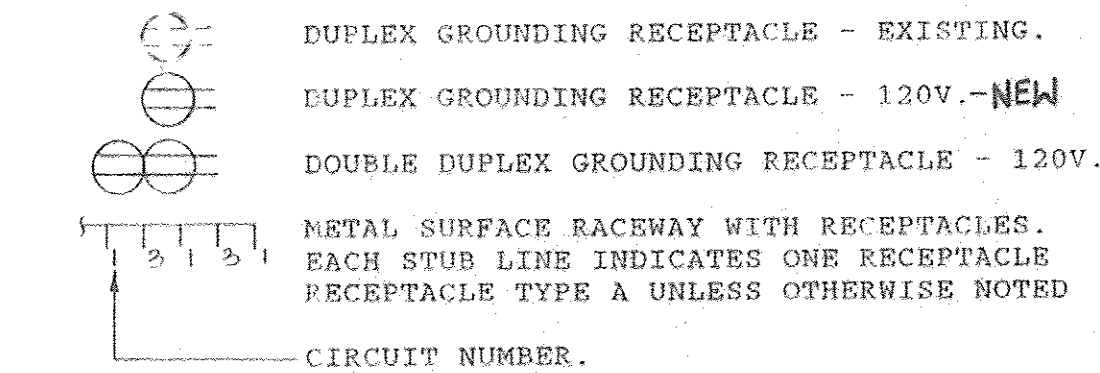
CAPITAL LETTERS DESIGNATE FIXTURE TYPE. HYPHENATED NUMBER DESIGNATES NO. OF LAMPS. SUBSCRIPT DESIGNATES SWITCH CONTROL IF MULTIPLE SWITCHES. SEPARATE NUMBER IF SHOWN DESIGNATES PANELBOARD CIRCUIT.

EXAMPLE: A-2 [Symbol] 1b
 FIXTURE TYPE A, TWO LAMPS, CKT 1, SWITCH b

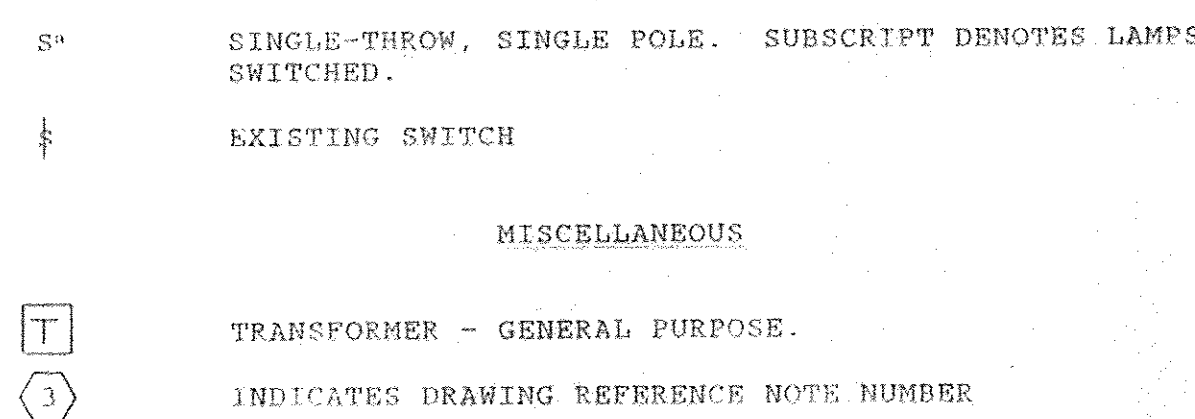


RECEPTACLE OUTLETS

NUMERAL DENOTES CIRCUIT NUMBER. ALL NEMA 5-20R UNLESS OTHERWISE NOTED. LETTER DENOTES TYPE IF OTHER THAN "A".



SWITCHES



DATA SYSTEM

[Symbol] DUAL LAN AND TELEPHONE SYSTEM OUTLETS- SEE SPECIFICATIONS.

MISCELLANEOUS SIGNAL SYSTEMS



ABBREVIATIONS

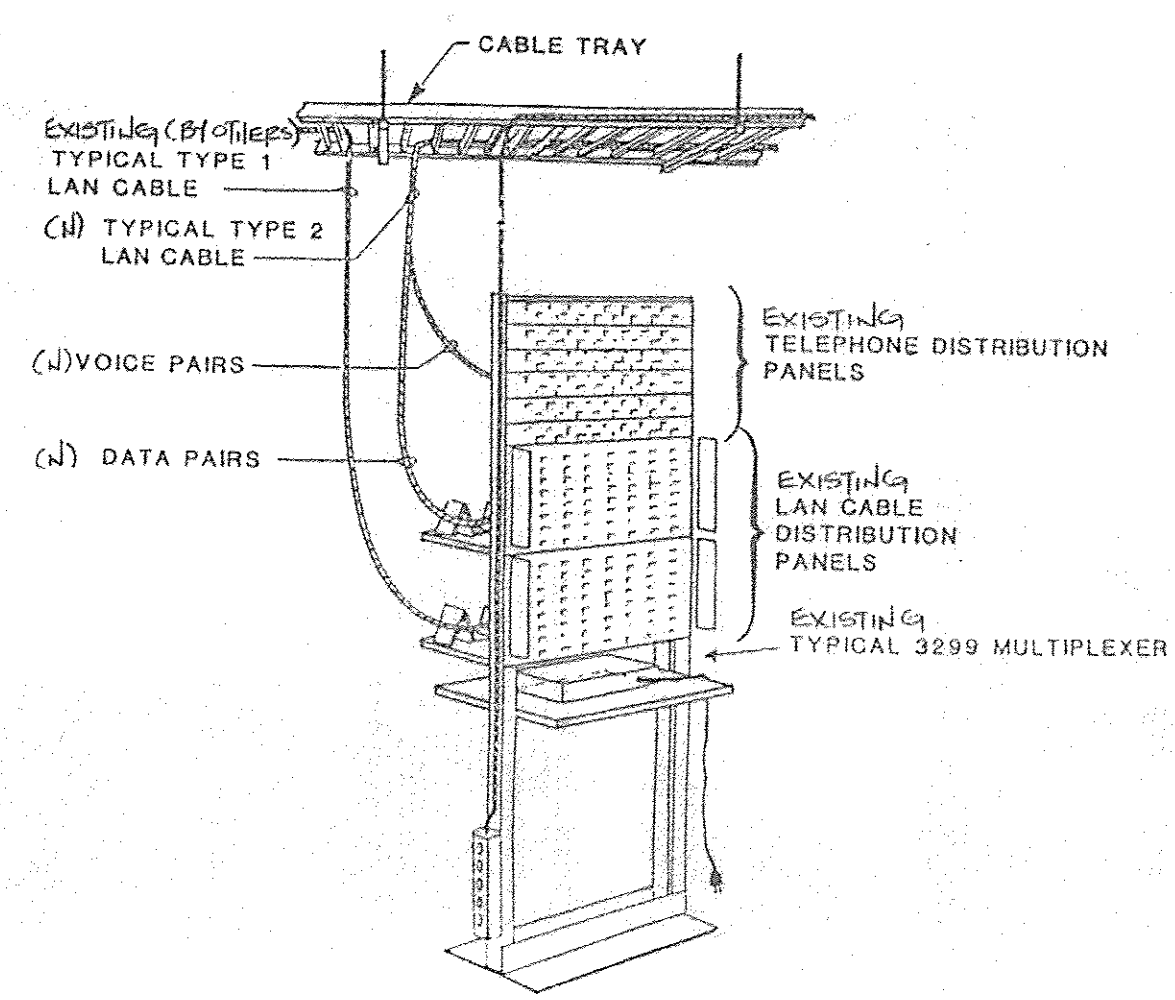
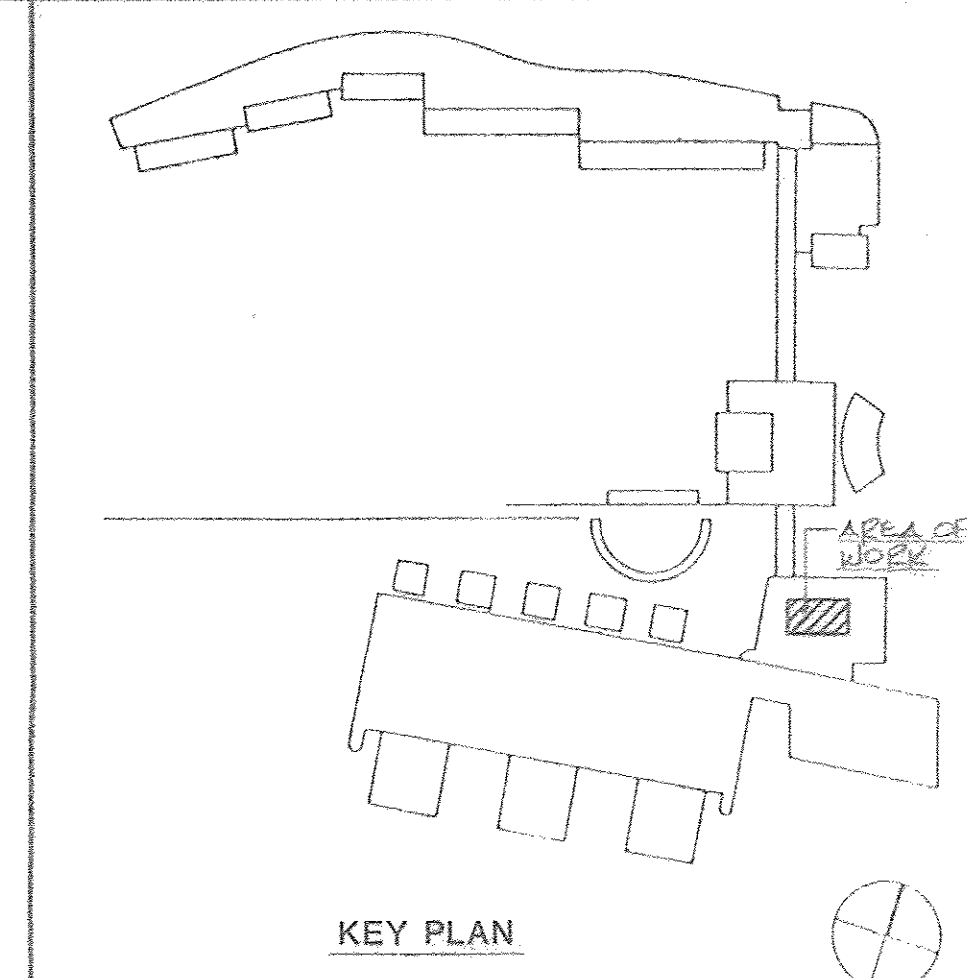
- A AMPERE
- AFF ABOVE FINISHED FLOOR
- CB CIRCUIT BREAKER
- COL COLUMN
- CPT. C CONDUIT
- EC EMPTY CONDUIT
- GND GROUND
- HYD HUNG
- JB JUNCTION BOX
- PNL PANELBOARD
- U.C. UNDERCOUNTER
- WM WIREMOLD
- 1P, 3P 1 POLE, 3 POLE
- (E) EXISTING
- (N) NEW
- (NC) NEW CONNECTION
- (R) REMOVE
- (REL.) RELOCATED

PANELBOARD SCHEDULE

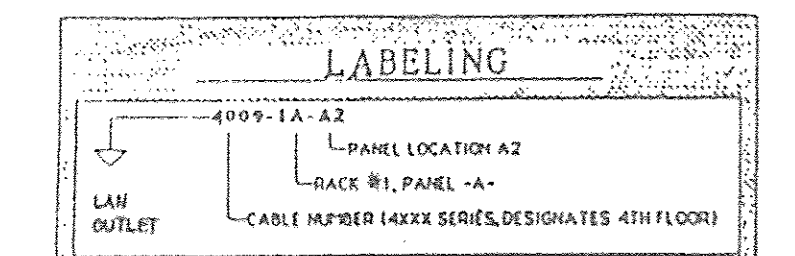
SURFACE MOUNTED PANELBOARD: LL-2D-2 FED FROM: LL-2D (2)
 VOLTS: 208/120 PHASE: 3 WIRES: 4 AMP MAINS: 100 30 POLES

NO. POLES	WIRE NO.	PHASE	TRIP LOAD	WIRE SIZE AWG	PLUS SIZE AWG	PLUS SIZE AWG	COND SIZE IN.	LOAD/DESCRIPTION
1, 3	1 EA		20	2.9			1/4	FEEDER/MLO GRAPHICS WORKSTATION 1
6, 8	1 EA		20	3.0				GRAPHICS WORKSTATION 2
5, 7								GRAPHICS WORKSTATION 3
9	1 EA		20	3.9				GRAPHICS WORKSTATION 4
10, 12								GRAPHICS WORKSTATION 5
14	1 EA		20	3.4				GRAPHICS WORKSTATION 6
16								GRAPHICS WORKSTATION 5
18	1 EA		20	3.0				GRAPHICS WORKSTATION 6
2, 4	1 EA		20	1.8				GRAPHICS WORKSTATION 6
20								
22	1 EA		20	1.5				GRAPHICS WORKSTATION 6
19, 21								GRAPHICS WORKSTATION 6
23	1 EA		20					TRANSFERRED FROM LL-2D
24 TO								
30	1 EA		20					SPARES

NOTE: 1. CONDUITS TO BE 1/2" UNLESS NOTED.
 2. SEE SYMBOLS FOR CIRCUITING OF HOMERUNS TO PANELBOARD.

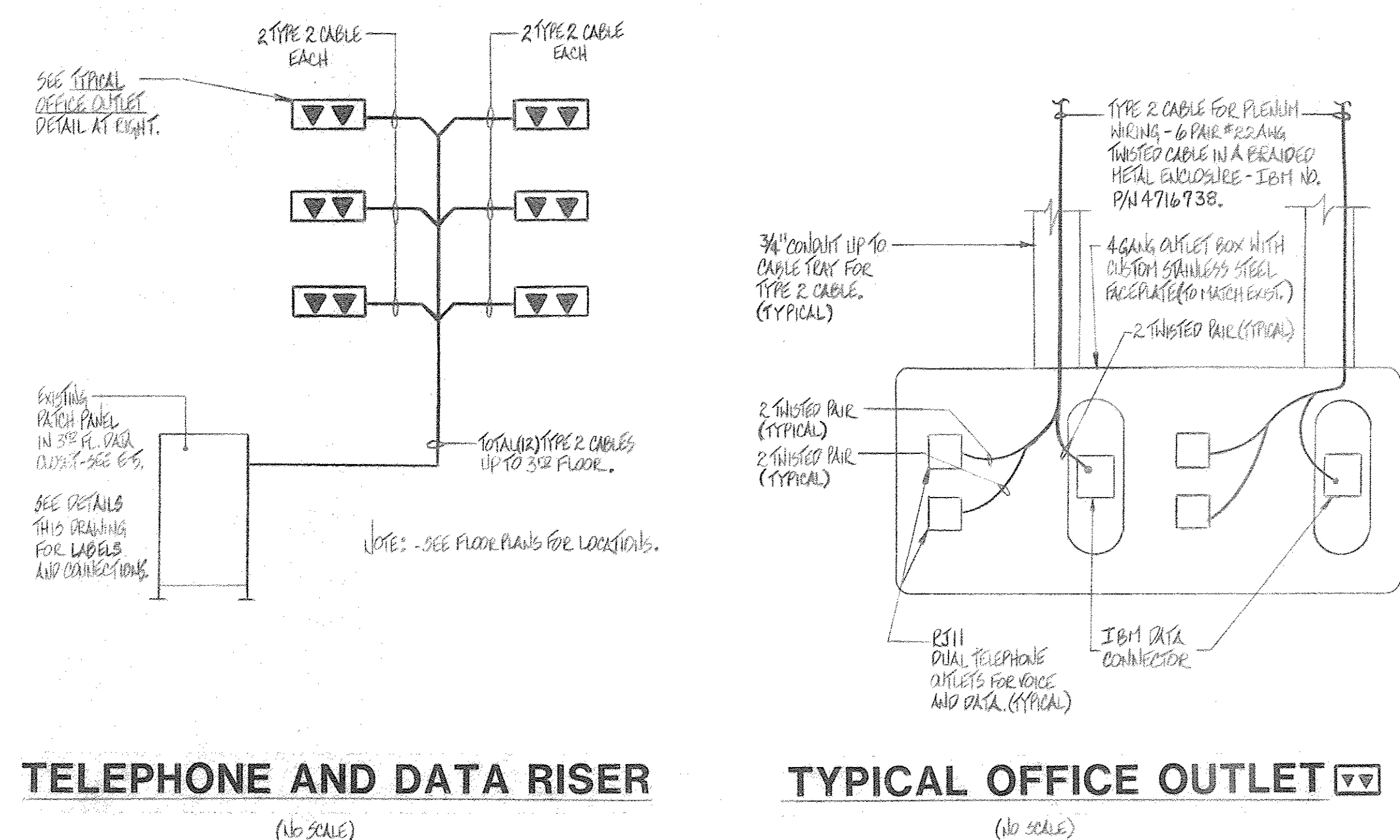
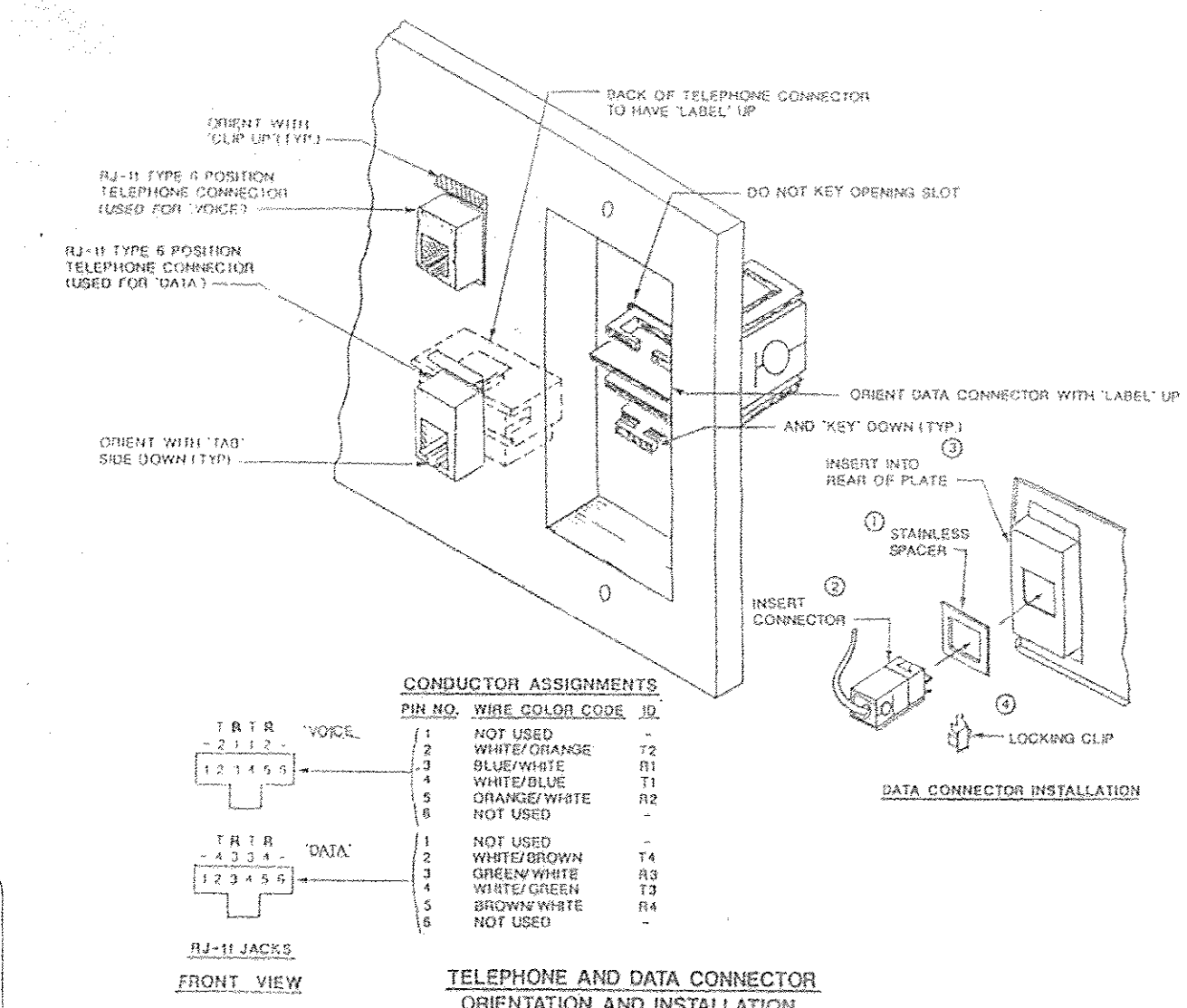


NOTES
 1. CONTRACTOR TO FURNISH AND INSTALL ALL CABLE AND CONNECTORS BETWEEN EACH OUTLET AND PATCH PANEL, AND MAKE CONNECTIONS TO PATCH PANEL.
 2. ALL PATCH PANEL CONNECTORS SHALL BE PROVIDED BY IBM, INSTALLED BY THIS CONTRACTOR.
 3. TERMINATION POINTS AND CABLE DEEP REQUIREMENTS TO BE AS PRECISED BY IBM.



IBM CABLING SYSTEM
 - PROVIDE LABEL ON EACH TYPE 2 CABLE FROM EACH LAN OUTLET.
 - COORDINATE RACK AND PANEL NUMBERS AND LOCATIONS WITH ACTUAL FIELD CONDITIONS.
 - PROVIDE TYPED LETTERING ON WHITE BACKGROUND TAPE AROUND EACH CABLE TO MATCH EXISTING.

CABLE IDENTIFICATION SYSTEM FOR DROP TO WIRING CLOSET



the HOLT GROUP
 The Barns Office Center Suite 207
 Stoneleigh Avenue • Carmel • New York • 10512

914 • 279 • 8282

ARCHITECTS

SEAL
 STATE OF NEW YORK
 ARTHUR R. BREUER
 LICENSED PROFESSIONAL ENGINEER
 No. 047008

CONSULTANTS

ARTHUR R. BREUER, P.E.
 CONSULTING ENGINEER
 24 N GREELEY AVENUE CHAPPAQUA NY 10514 3410

NO	BY	REVISION	DATE
----	----	----------	------

NO	BY	REVISION	DATE
----	----	----------	------

PROJECT: IBM • PALISADES, N.Y.
 GRAPHICS CENTER
 2nd FLOOR ALTERATION

TITLE: ELECTRICAL: NOTES, SYMBOLS, SCHEDULES, AND DATA DETAILS

SCALE: NONE DATE: JUNE 1, 1990 PROJECT NO: 478 DRAWN BY: WRP

E
 Drawing No
 1
 10FS

6-2

5-2

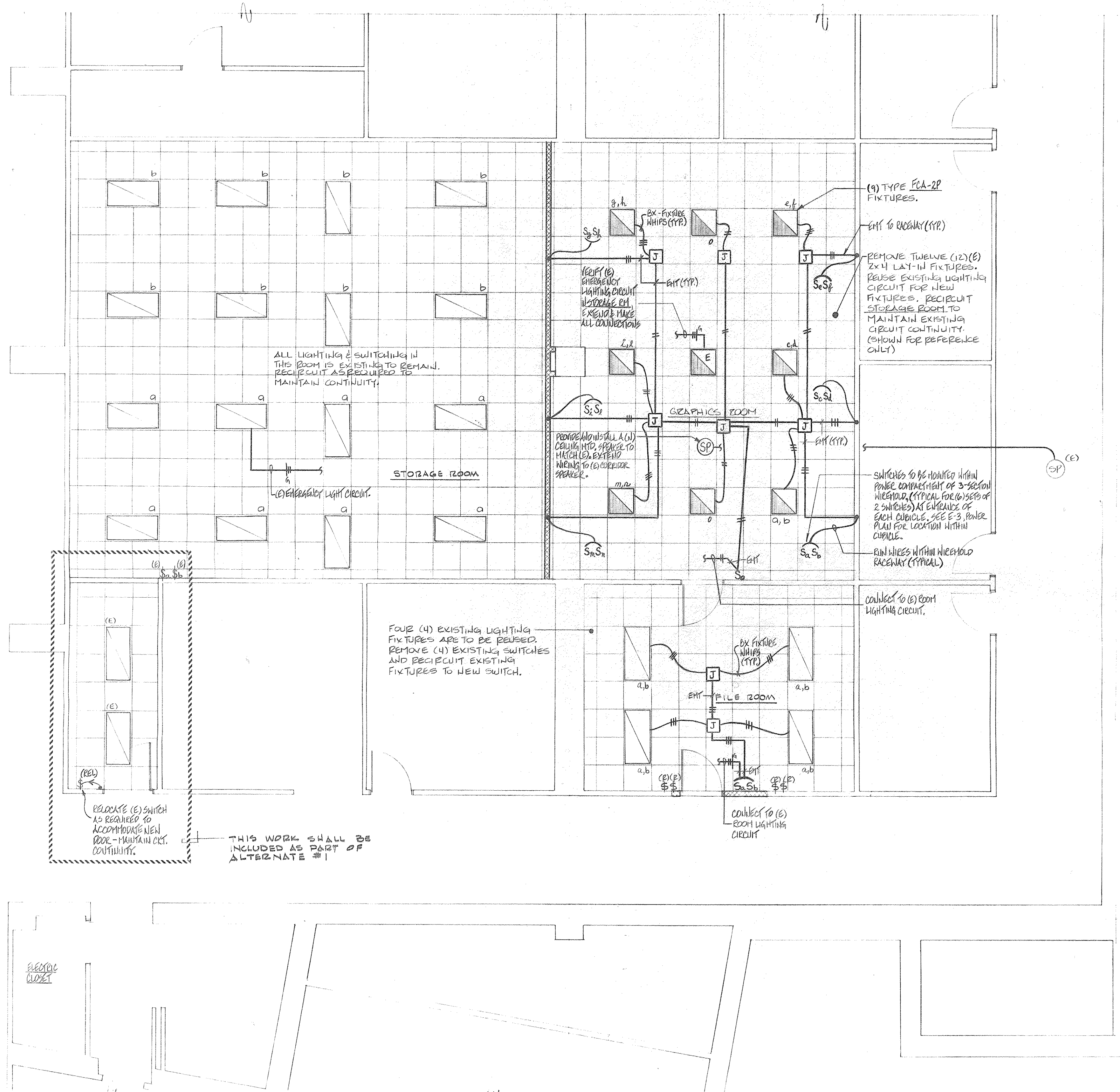
4-2

X-5

Y

Y-5

Z



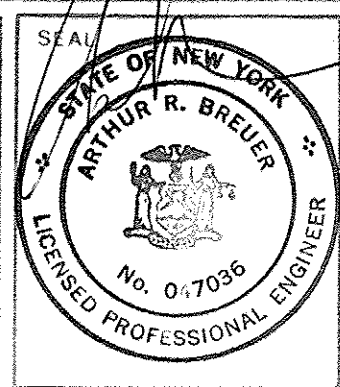
SECOND FLOOR PART PLAN

the HOLT GROUP

The Barns Office Center Suite • 207
Stoneleigh Avenue • Carmel • New York • 10512

914 • 279 • 8282

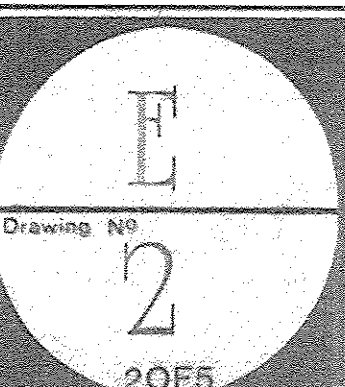
ARCHITECTS



CONSULTANTS			
ARTHUR R. BREUER, P.E.			
CONSULTING ENGINEER			
24 N. GREELEY AVENUE CHAPPAQUA, N.Y. 10514-3410			
No.	BY	REVISION	DATE

No.	BY	REVISION	DATE

PROJECT	IBM • DALISADES, N.Y.		
	GRAPHICS CENTER 2ND FLOOR ALTERATION - LEVEL 142'-0"		
TITLE	ELECTRICAL LIGHTING PLAN		
SCALE	DATE	PROJECT NO.	DRAWN BY
1/2" = 1'-0"	JUNE 1, 1990	478	WRP



6-2

5-2

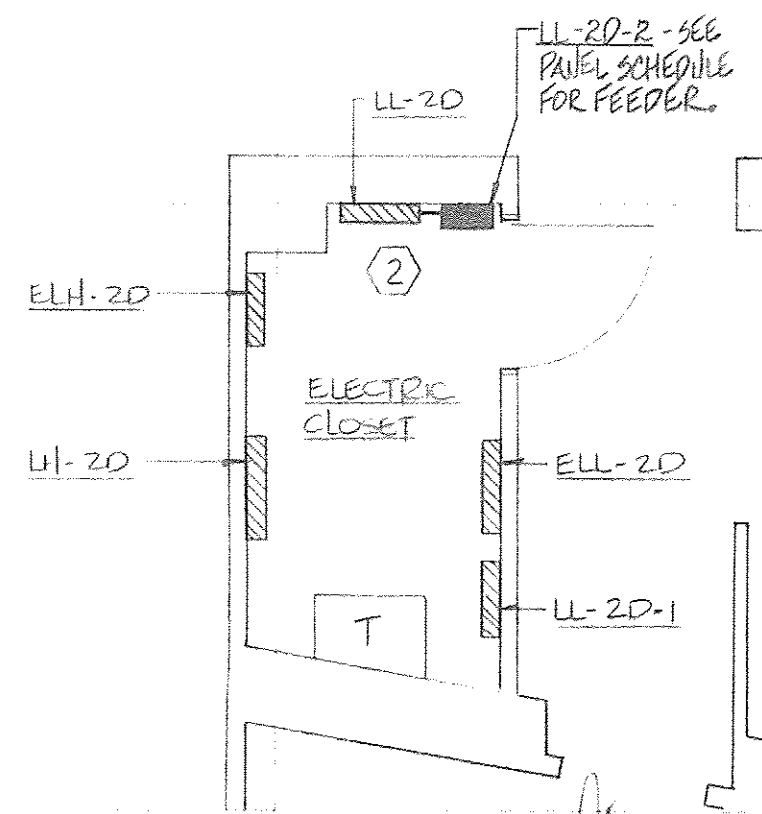
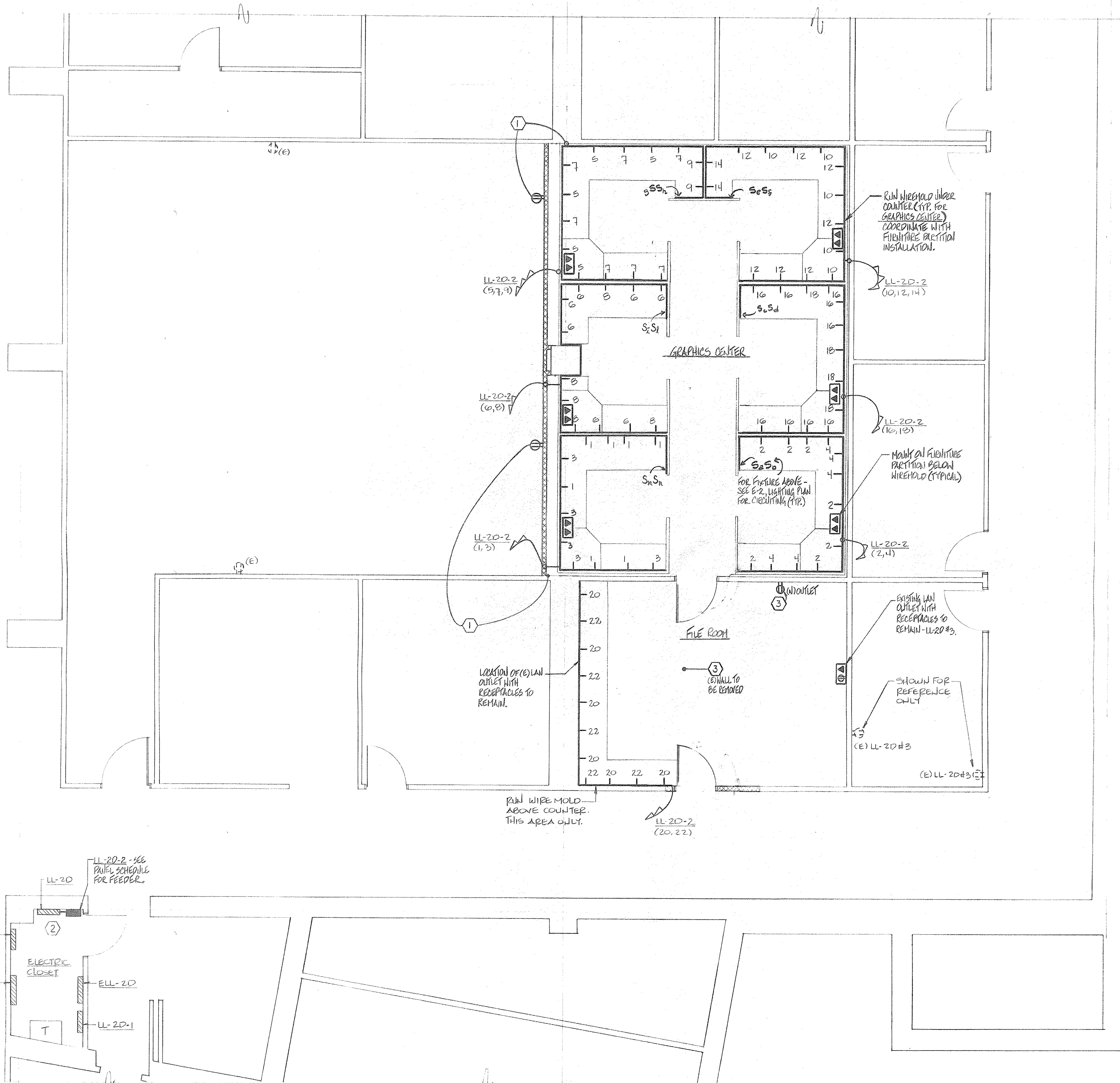
4-2

X-5

Y

Y-5

Z



DRAWING REFERENCE NOTES

- ① REMOVE EXISTING RECEPTACLES AND PULL WIRING TO NEAREST JUNCTION BOX. EXTEND TO NEW RECEPTACLE LOCATIONS. WIRING IS FROM PANEL LLP-2D CRT. 42 (VERIFY IN FIELD).
- ② REMOVE (3) 1P, 20 AMPERE CIRCUIT BREAKERS FROM EXISTING PANEL LL-2D AND RELOCATE BRANCH CIRCUITS TO NEW 1P, 20 AMPERE CIRCUIT BREAKERS IN PANEL LL-2D-2. PROVIDE A NEW 3P, 80 AMPERE CIRCUIT BREAKER IN PANEL LL-2D TO FEED NEW PANEL LL-2D-2. ANY POWER SHUTDOWNS OR LOSS OF BRANCH CIRCUIT POWER MUST BE COORDINATED IN ADVANCE WITH IBM.
- ③ REMOVE (2) EXISTING RECEPTACLES FROM WALL TO BE REMOVED AND REUSE EXISTING CIRCUITING (FROM LL-2D CRT. 3 - VERIFY IN FIELD) FOR THE NEW RECEPTACLE SHOWN.

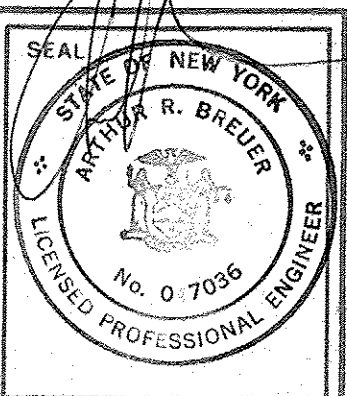
SECOND FLOOR PART PLAN

NOTE: ALL WORK IS NEW UNLESS OTHERWISE NOTED.

the HOLT GROUP
 The Barns Office Center Suite • 207
 Stoneleigh Avenue • Carmel • New York • 10512

914 • 279 • 8282

ARCHITECTS



CONSULTANTS:

ARTHUR R. BREUER, P.E.
 CONSULTING ENGINEER
 24 N. GREELEY AVENUE CHAPPAQUA, N.Y. 10514-3410

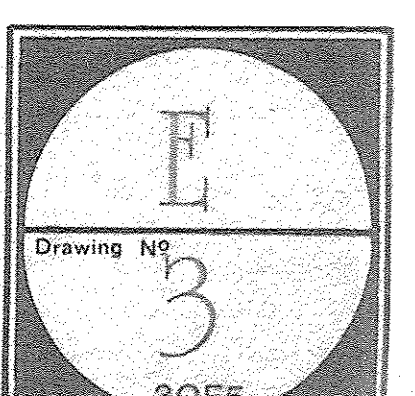
NO	BY	REVISION	DATE

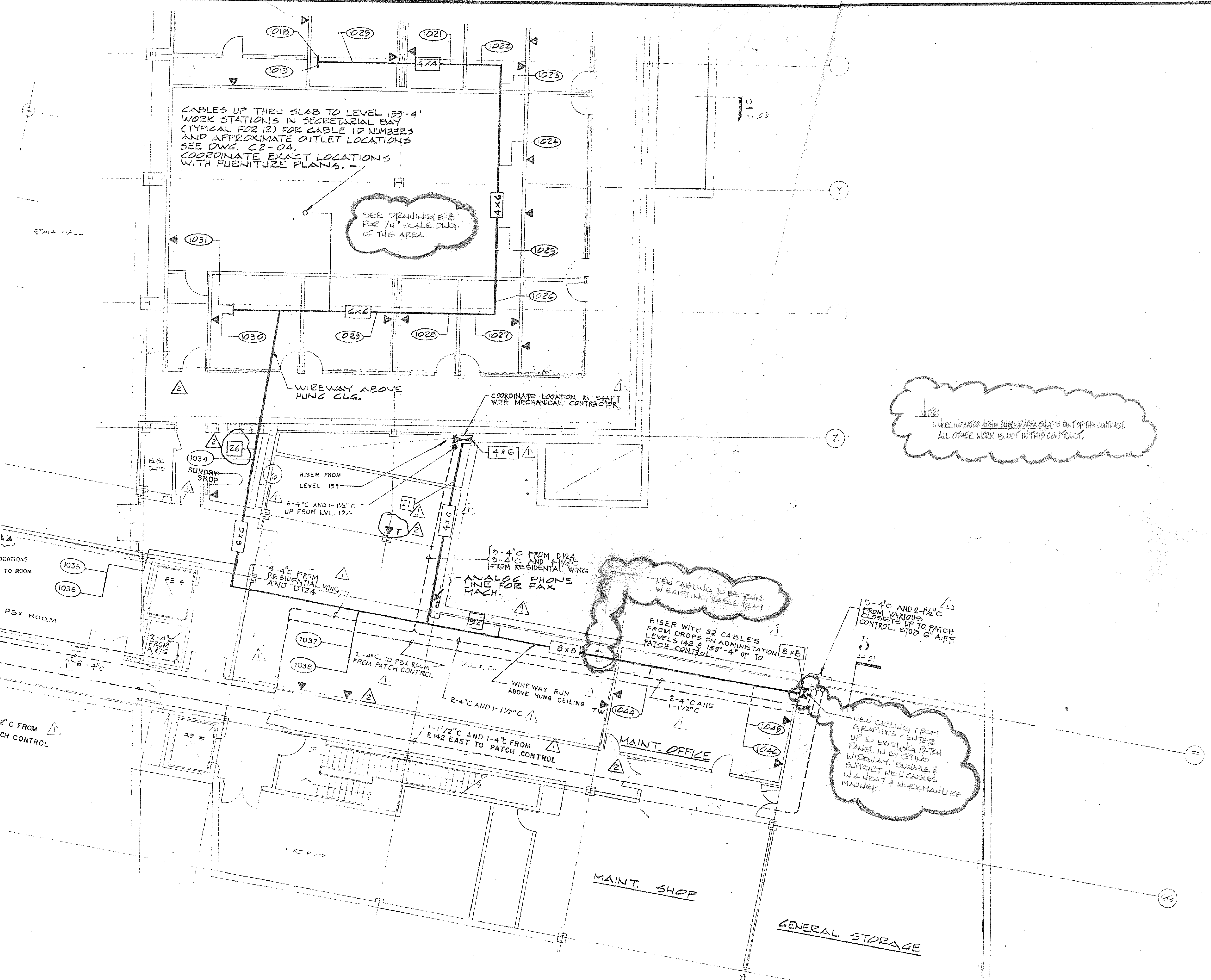
NO	BY	REVISION	DATE

PROJECT: **IBM • PALISADES, N.Y.**
GRAPHICS CENTER
2nd FLOOR ALTERATION - LEVEL 142'-0"

TITLE: **ELECTRICAL POWER PLAN**

SCALE: 1/2" = 1'-0"	DATE: JUNE 1, 1990	PROJECT NO: 478	DRAWN BY: WRP
---------------------	--------------------	-----------------	---------------





CABLES UP THRU SLAB TO LEVEL 159'-4"
 WORK STATIONS IN SECRETARIAL BAY
 (TYPICAL FOR 12) FOR CABLE ID NUMBERS
 AND APPROXIMATE OUTLET LOCATIONS
 SEE DWG. C2-04.
 COORDINATE EXACT LOCATIONS
 WITH FURNITURE PLANS.

SEE DRAWING E-3
 FOR 1/4" SCALE DWG.
 OF THIS AREA.

NOTE:
 1. WORK INDICATED WITHIN DASHED AREA CALLS IS PART OF THIS CONTRACT.
 ALL OTHER WORK IS NOT IN THIS CONTRACT.

NEW CABLING FROM
 GRAPHICS CENTER
 UP TO EXISTING PATCH
 PANEL IN EXISTING
 WIREWAY. BUNDLE &
 SUPPORT NEW CABLES
 IN A NEAT & WORKMANLIKE
 MANNER.

NO.	REVISION DESCRIPTION	APPROVAL INITIAL AND DATE

KEY PLAN		

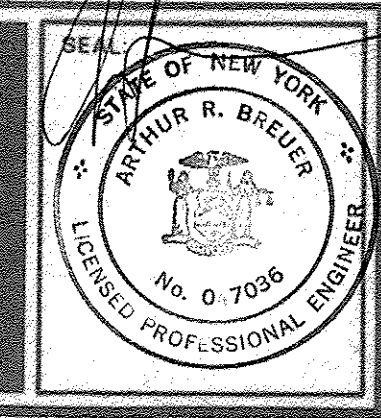
PROJECT TITLE		 RECD. HEADQUARTERS FACILITIES 250 Harbor Drive P.O. Box 70201 Stamford, CT 06904-2501
GRAPHICS CENTER 2ND FLOOR ALTERATION LEVEL 142'-0"		
DRAWING TITLE		
DATA CABLE ROUTING		
DRAWN BY	SCALE	DATE
WRP	1/8" = 1'-0"	JUNE 1, 1990
BUILDING	FLOOR	SECT.
PROJECT NO.		DRAWING NO.
478		E-4

the HOLT GROUP

The Barns Office Center Suite 207
 Stoneleigh Avenue • Carmel • New York • 10512

914 • 279 • 8282

ARCHITECTS



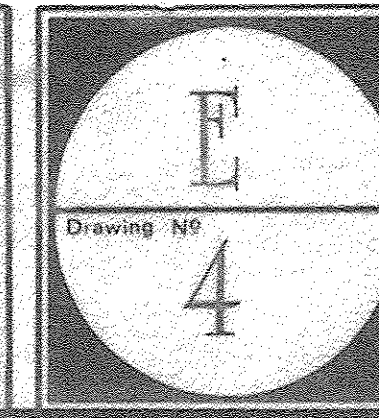
CONSULTANTS:

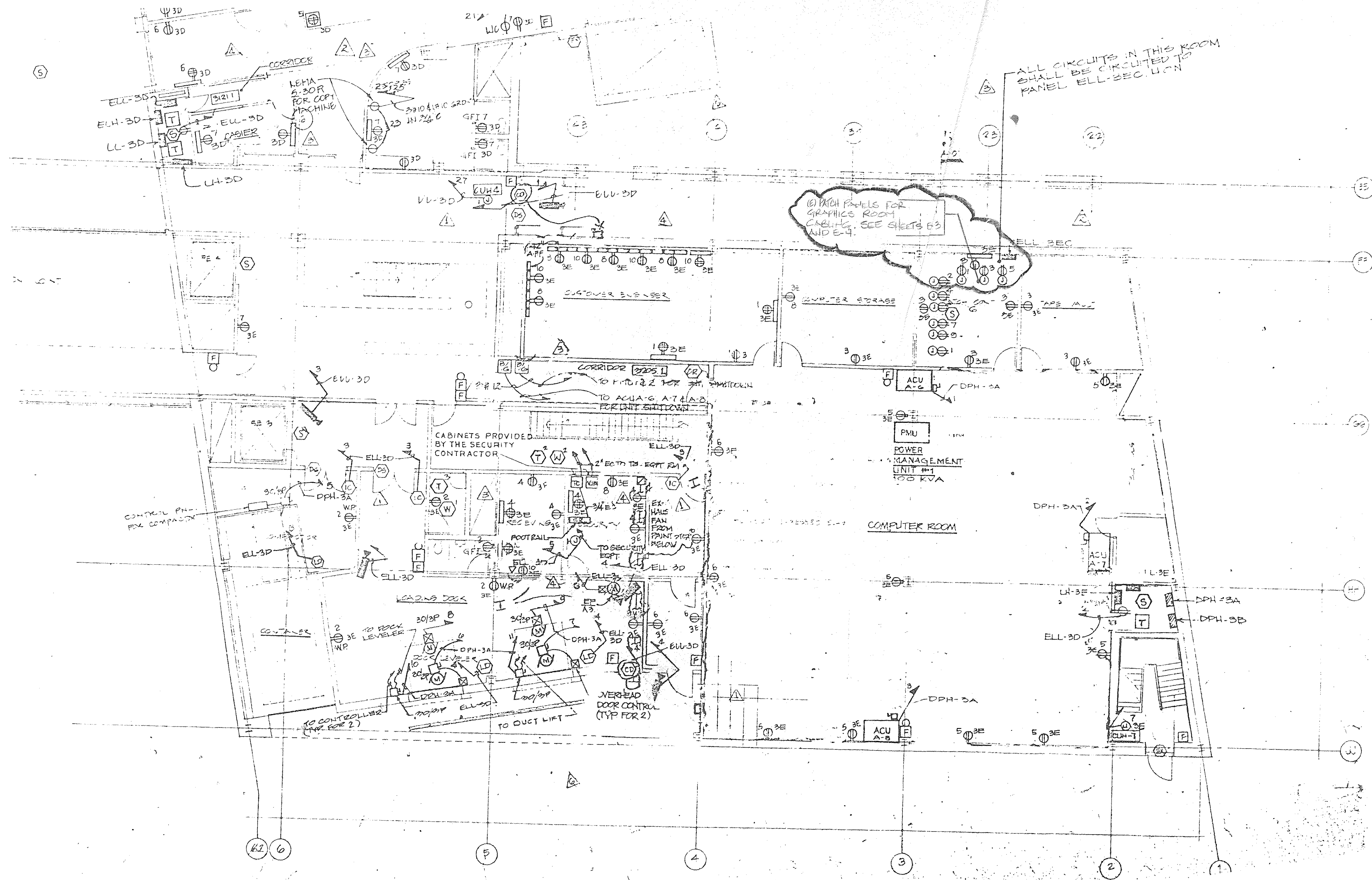
ARTHUR R. BREUER, P.E.
 CONSULTING ENGINEER
 24 N. GREELEY AVENUE CHAPPAQUA, N.Y. 10514-3410

PROJECT: IBM • PALISADES, N.Y.
 GRAPHICS CENTER
 2nd FLOOR ALTERATION

TITLE:

SCALE: DATE: PROJECT NO. DRAWN BY:





NOTES
 1. WORK INDICATED WITHIN BUBBLED AREA ONLY IS PART OF THIS CONTRACT.
 ALL OTHER WORK IS NOT PART OF THIS CONTRACT.

NO.	REVISION DESCRIPTION	APPROVAL INITIAL AND DATE

KEY PLAN



PROJECT TITLE
**GRAPHICS CENTER
 2ND FLOOR ALTERATION
 LEVEL 159-4"**

DRAWING TITLE
PATCH PANEL ROOM

DRAWN BY WRP	SCALE 1/8" = 1'-0"	DATE JUNE 1, 1990	DRAWING NO. E-5
BUILDING	FLOOR	SECT. 478	50F5

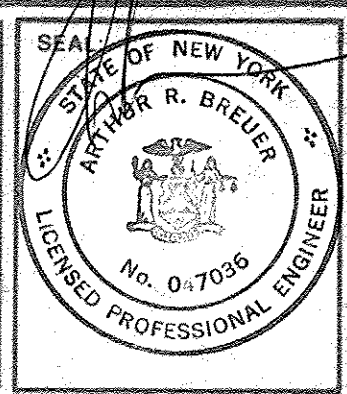


RECD HEADQUARTERS FACILITIES
 250 Harbor Drive
 P.O. Box 10500
 Stamford, CT 06904-2501

the HOLT GROUP
 The Barns Office Center Suite 207
 Stoneleigh Avenue • Carmel • New York • 10512

ARCHITECTS

914 • 279 • 8282



CONSULTANTS:
ARTHUR R. BREUER, P.E.
 CONSULTING ENGINEER
 24 N. GREELEY AVENUE CHAPPAQUA, N.Y. 10514-3410

PROJECT: **IBM • PALISADES, N.Y.**
**GRAPHICS CENTER
 2nd FLOOR ALTERATION**

TITLE:
 SCALE: DATE: PROJECT NO. DRAWN BY:

