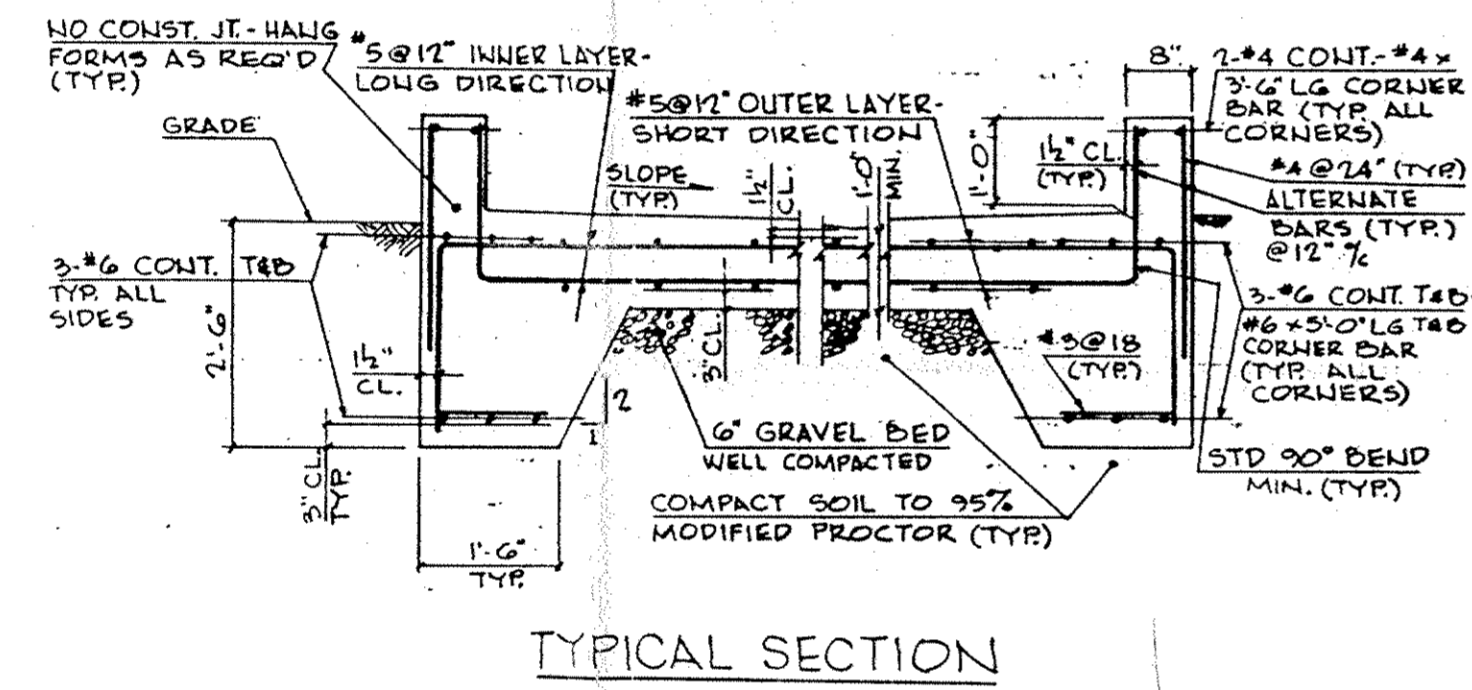
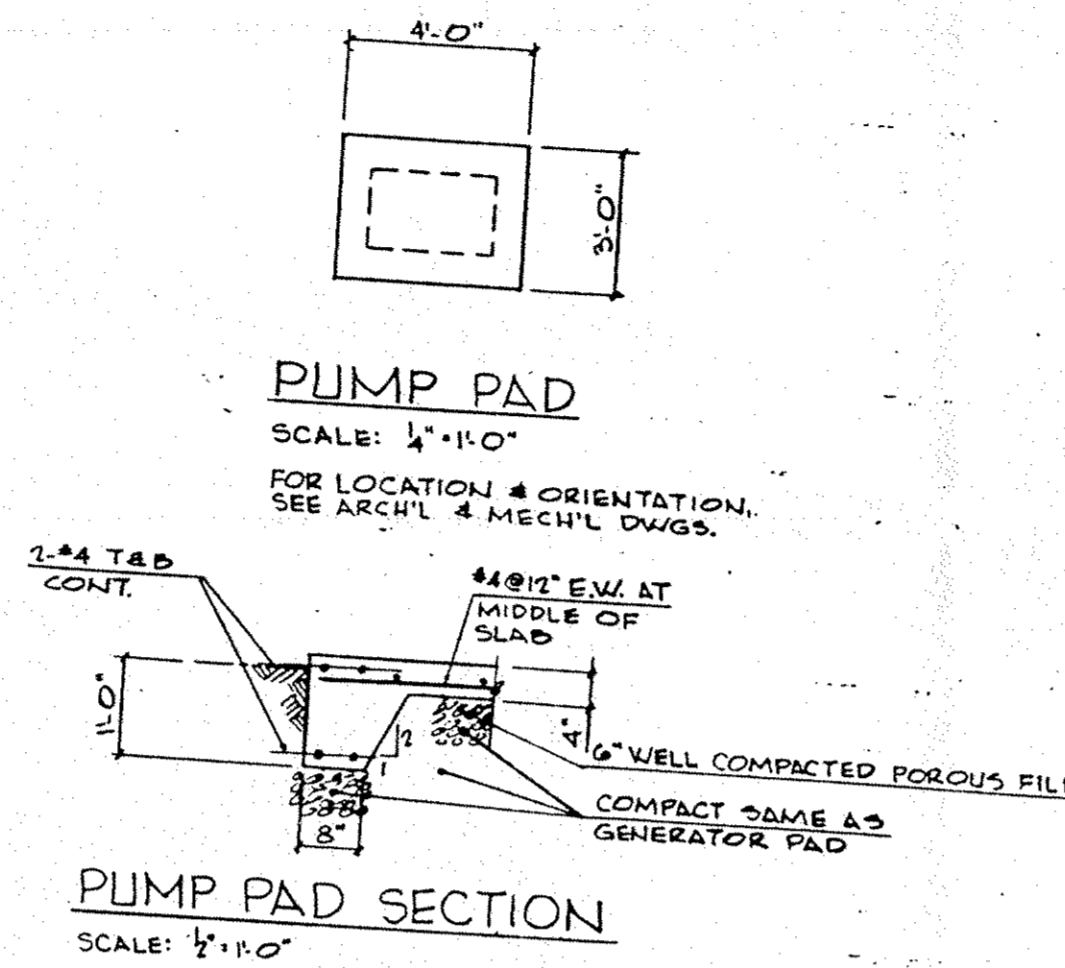


**GENERATOR PAD**  
SCALE: 1/4" = 1'-0"

- FOR LOCATION & ORIENTATION SEE ARCH'L & MECH'L DWGS.
- FOR LOCATION OF DRAIN & CONDUITS, SEE ARCH'L, MECH'L & ELECTR'L DWGS.
- AFTER 28 DAYS OF CURING, THE NEW PAD/MOAT SHALL BE COATED WITH 'CORCHEM 204 HIGH BUILD EPOXY' COATING IN ACCORDANCE W/ MANUFACTURER'S SPECIFICATIONS, REQ'MENTS & RECOMMENDATIONS. THE COLOR SHALL MATCH THE IBM SITE STANDARD.



**GENERAL NOTES**

- VERIFY ALL DIMENSIONS AND CONDITIONS IN THE FIELD BEFORE FABRICATING ANY STEEL.
- ALL CONSTRUCTION AND DEMOLITION WORK SHALL CONFORM TO STATE AND LOCAL BUILDING CODE REQUIREMENTS.
- DETAILED SHOP DRAWINGS TO BE SUBMITTED TO CONSULTANT FOR APPROVAL PRIOR TO FABRICATION. SUBMIT WITH ALL DIMENSIONS AND FIELD CONDITIONS.
- CONSULTANT SHALL BE INFORMED OF ANY DISCREPANCIES FOUND IN THE FIELD. CONTRACTOR MUST GET CONSULTANT'S APPROVAL FOR ANY CHANGE IN DRAWINGS.
- ALL DEBRIS SHALL BE DISPOSED OF PROMPTLY IN A MANNER CONSISTENT WITH ALL LOCAL CODES AND ORDINANCES.
- PROVIDE ADEQUATE PROTECTION AGAINST FIRE AND MAINTAIN FIRE PROTECTION AT ALL TIMES.
- ALL EXISTING ADJOINING STRUCTURES, EQUIPMENT, DUCTS, PIPING, ETC. ARE NOT TO BE DISTURBED.

**FOUNDATION**

- BEARING STRATA SHALL BE COMPACTED TO A MINIMUM OF 95% MODIFIED PROCTOR.
- CONCRETE PAD SHALL BEAR ON SOIL HAVING A MINIMUM BEARING CAPACITY OF ONE (1) TON PER SQUARE FOOT.
- BEARING STRATA FOR CONCRETE PAD SHALL REMAIN DRY.

**CONCRETE NOTES**

- REINFORCED CONCRETE SHALL BE IN ACCORDANCE WITH THE LATEST ACI 318 BUILDING CODE AND ACI DETAILING MANUAL.
- CONCRETE SHALL BE STONE CONCRETE HAVING A MINIMUM COMPRESSIVE STRENGTH OF 3,500 PSI AT 28 DAYS, AND BE AIR-ENTRAINED WITH BETWEEN FOUR AND SEVEN PERCENT (4-7%) ENTRAINED AIR. CONTRACTOR SHALL SUBMIT DESIGN MIX FOR CONCRETE FOR A MINIMUM COMPRESSIVE STRENGTH OF 25% GREATER THAN REQUIRED.
- REINFORCING STEEL SHALL BE ASTM A615 GRADE 60 AND SHALL BE EPOXY COATED. EPOXY COAT ALL ENDS OF REBARS, AND WHERE EPOXY HAS BEEN REMOVED, SUBMIT EPOXY CATALOG USED FOR REVIEW.
- SUBMIT CYLINDER TEST REPORT FOR CONCRETE STRENGTH, ONE (1) AT 7 DAYS AND THREE (3) AT 28 DAYS FOR EVERY 50 CUBIC YARDS AND/OR EACH DAY'S POUR. SUBMIT TEST RESULTS TO CONSULTANT.
- BONDING AGENT SHALL BE HIGH MODULUS AND HIGH STRENGTH BONDING COMPOUND. CONTRACTOR SHALL SUBMIT SPECIFICATIONS OF BONDING COMPOUND FOR APPROVAL.
- ALL CAST-IN-PLACE CONCRETE SHALL BE CURED AS PER ACI 318-99, SECTION 5.11.
- LAP ALL BARS A MINIMUM OF 40 BAR DIAMETERS, UNLESS NOTED. STAGGER LOCATION OF SPLICES.
- CONCRETE SHALL HAVE A SLUMP OF 5" PLUS OR MINUS 1" AND BE FULLY VIBRATED.

Legend

Key Plan

No.	Date	Issue	By

Notes

Notes

No.	Date	Revisions	By

Reference Notes

Reference Notes

Legend

Notes

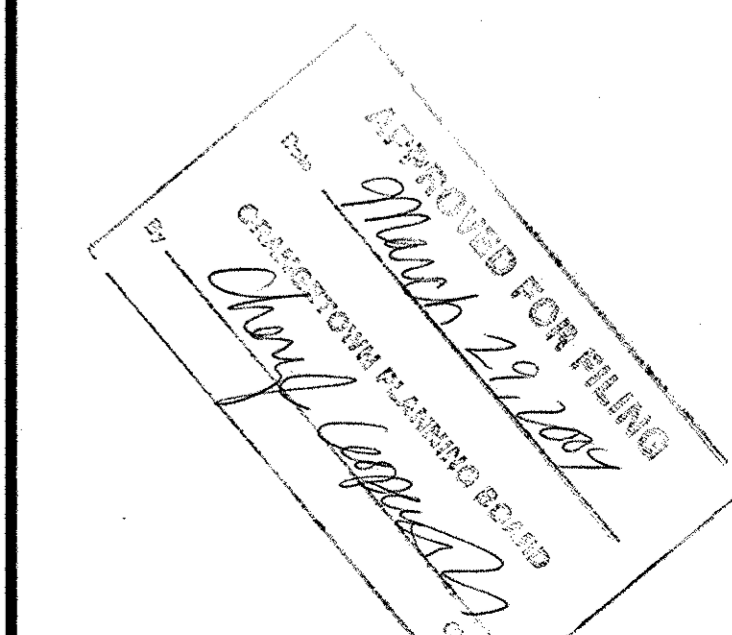
Reference Notes

**THE SWITZER GROUP, INC.**  
ARCHITECTS - ENGINEERS - CONSULTANTS  
441 BROADWAY, SUITE 2000  
NEW YORK, NY 10013  
(212) 258-0881 Fax: (212) 258-0831

**THE SWITZER GROUP, INC.**  
318 7th Avenue, New York, NY 10017 Tel: 212.252.1113 Fax: 212.252.8825

The above designs, plans and specifications are the property of The Switzer Group, Inc. Contractor is responsible for checking all dimensions and conditions at job site, as well as building codes and regulations including building elevators. Conditions and all other clearances should be checked with The Switzer Group, Inc. prior to fabrication of steel work. Contractor is responsible for correcting same at his own expense. Use of these designs for any other purpose is unauthorized.

Drawing Title  
**GENERATOR PAD-PLAN & SECTION**  
Date 11/1/02 Job No.  
Scale AS NOTED Drawn By AJC  
Prof. Mgr. AJC Checked By NS  
Seal Seal



Floor No.   Day No. S-1

THE SWITZER GROUP, INC.